

Local Snapshot

Pacific County Positive Cases: 60

Pacific County Total Tests: 2922

Pacific County Active Cases 2

Pacific County Hospitalizations 8

Pacific County Deaths 3

All counties in WA State have reported confirmed cases of COVID-19.

The Pacific County Emergency Operations Center is open Monday - Friday, 8:00am - 4:00pm

Please give us a call with any COVID-19 related questions or concerns.

North County: (360) 875-9407 / South County: (360) 642-9407

If you are experiencing a medical emergency, please contact 9-1-1 immediately.

Washington 211 COVID-19 Call Center

Call for general information related to COVID-19. If you need information or have a general question, call 1-800-525-0127 or text 211-211 for help. You can also text the word "Coronavirus" to 211-211 to receive information and updates on your phone wherever you are. You will receive links to the latest information on COVID-19, including county-level updates, and resources for families, businesses, students, and more.

For the latest Washington State COVID-19 data please click on the link below:

<https://www.doh.wa.gov/Emergencies/Coronavirus>

For the latest PACIFIC COUNTY COVID-19 DATA please click on the link below. The page is very informative and illustrates how we are trying to disseminate information and resources:

<https://www.pacificcountycovid19.com/>

Next Weekly Community Forum: Wednesday, August 5th at 11:30 (re-occurring) via Zoom or Facebook Live

<https://us02web.zoom.us/j/84282447783>

1-253-215-8782 meeting id: 84282447783#

Statewide Snapshot

WA State Total Positive/Confirmed Cases as of 8/18/2020: 71,705. WA Total Deaths: 1876

Neighboring Counties: Wahkiakum County 6 cases, Grays Harbor 215 cases, Lewis County 315 cases, Clatsop County 94 cases.

Pacific County's COVID-19 Case Count Stands at 60 Cases, 1 Additional Death Confirmed

Pacific County Health and Human Services has received confirmation that a Pacific County resident who tested positive for COVID-19 died as a result of COVID-19. Due to age and underlying conditions the individual was considered high risk. This is the third COVID-19 death attributed to Pacific County.

Public health officials, including the public health nurse for this case, Lori Craig Ashley, would like to extend heartfelt condolences to the family and friends of this individual during this time of loss.

Pacific County has also received notice of one positive case of COVID-19 in Pacific County. This case is in addition to the 59 previously reported cases for a total of 60 cases. There are currently two active cases being monitored by public health nurses. Both are confirmed cases.

Pacific County Health and Human Services strongly encourages the public to limit non-essential travel, maintain social distancing of at least six feet between persons, and practice personal protective measures to include: correctly wearing a mask/face covering in public, washing hands often with soapy water for at least 20 seconds, and avoid touching your face. For up to date information and guidance, please monitor the Pacific County Health and Human Services Facebook page or visit: www.pacificcountycovid19.com.

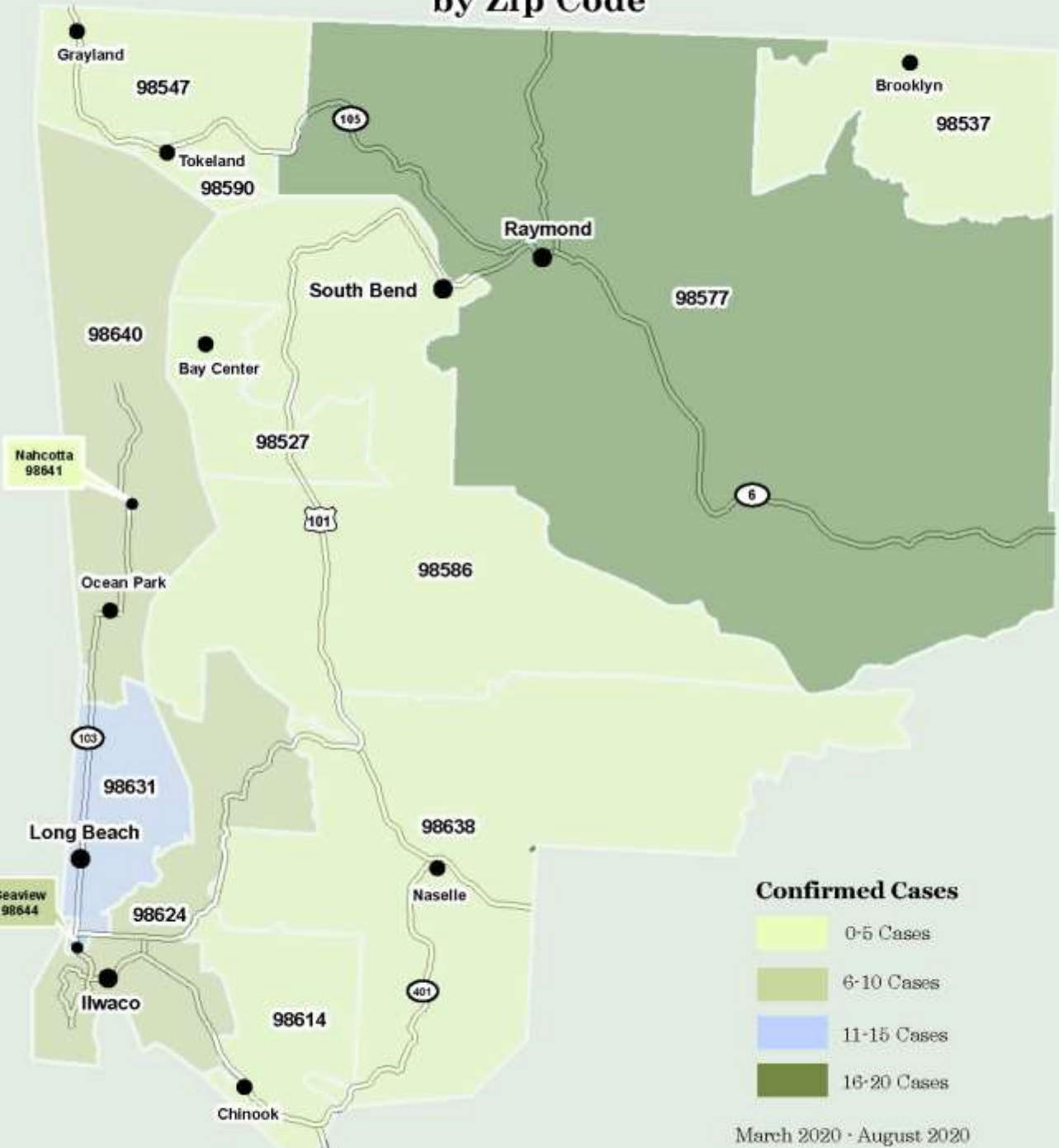
County Data and Case Update	8/5/2020	8/12/2020	8/19/2020	8/26/2020
Confirmed Cases (Total)	43	55	58*	60
<i>Confirmed Cases that resided in Pacific County</i>	37	51	54	56
<i>Active Cases (monitored by Public Health)</i>	19	13	3	2
<i>Probable Cases (monitored by Public Health)</i>	6	0	0	0
<i>Closed Cases (no longer monitored by Public Health)</i>	24	42	55	58
Hospitalizations	6	8	8	8
Deaths	2	2 (1 pending)	2 (1 pending)	3
Percent Deaths (deaths/confirmed cases)	4.7%	3.6% (5.5%)	3.6% (5.5%)	5.0%
Total Tests	1525 - 2061	2320	2702	2922
Percent Positive (confirmed cases/total tests)	2.8% - 2.1%	2.4%	2.1%	2.1%
Percent Positive (7 Day Average):	10.4% - 4.0%	4.6%	0.8%	0.9%
Cases per 100k per 14 days (rolling)	69.3	92.7	54.5	27.2

Updates highlighted

State Generated Dashboard (<https://www.pacificcountycovid19.com/>). Time lag/Correction.

PACIFIC COUNTY

Total Number of Residents Confirmed with Covid-19 by Zip Code



"Case location is based on permanent residence. This map does not show where exposure or transmission of COVID-19 occurred"

74 new cases of COVID-19 identified in one week in Grays Harbor County

Since August 17th, Grays Harbor County Public Health and Grays Harbor Emergency Operations Center have identified 74 new laboratory-confirmed cases of COVID-19 among people who reside in Grays Harbor County.

At least half of these new cases have been linked to two separate outbreaks identified at two private businesses. Grays Harbor County Public Health is working closely with both employers to mitigate any further spread of COVID-19 within Grays Harbor County.

Some investigations are still pending, but thus far approximately 10% of the 74 new cases have no known source of exposure.

Grays Harbor County Public Health updates COVID-19 numbers Monday - Friday at noon on healthygh.org.

How to get together safely

When you are planning to meet up with a friend or family member in person, you may agree that you will be “safe,” but do you both understand what “safe” means to the other person?

<https://medium.com/wadepthealth/its-time-for-the-talk-19919ac8362f>

Basic Face Shields Do Not Sufficiently Meet the Face Covering Requirement

Face shields protect the wearer from particles but do not sufficiently inhibit the travel of particles *from* the wearer. Only face shields with a cloth attachment to inhibit particles meet the workplace face covering requirement. <https://lni.wa.gov/agency/outreach/coronavirus-covid-19-worker-face-covering-and-mask-requirements-questions>

Inslee Issues Proclamation Requiring Agricultural Worker Testing

Governor Jay Inslee issued an update to Proclamation 20-57, “Concerning the Health of Agricultural Workers.” The proclamation now requires agricultural employers to test their workforce broadly when health officials identify an outbreak that passes certain thresholds.

Since the governor first issued Proclamation 20-57 on May 28, the total number of cases in Washington has increased from 21,138 to 67,721, an average rate of more than 500 new cases per day. Many of these are appearing at farms and food-packing facilities, where employees often work, travel, and live together in close contact. [Read more](#)

Washington Economy Recovers More Jobs but Unemployment Rate Rises

Washington’s economy added 44,500 jobs in July and the state’s preliminary seasonally adjusted monthly unemployment rate for July rose slightly from 10.0 percent to 10.3 percent according to the Employment Security Department (ESD). [Read more](#)

Phase 3 Updates

- **Museums:**
 - Same guidelines as Phase 2 but capacity now allowed at 50%.
 - Food and beverage services must conform to all Phase 3 dine-in food service guidelines. Gift shops must conform to all Phase 3 retail guidelines.
 - Events allowed limited to current participant limit for social gatherings in Phase 3.
- **Bowling:**
 - Allows for bowling league play in Phases 2 and 3, as long as facilities meet certain requirements. Read the full guidance
- **Agritourism:**
 - Allows for agritourism such as U-pick farms and tree farms to operate in Phase 2 counties.
- **Outdoor recreation:**
 - Updates clarify restrictions to non-spectator motor-sports in Phase 1 and Phase 2 of the Safe Start plan. These changes go into effect on August 24.

Read the full updated guidance: https://www.governor.wa.gov/issues/issues/covid-19-resources/covid-19-reopening-guidance-businesses-and-workers?utm_medium=email&utm_source=govdelivery

END OF STATUS REPORT