



Public Health & Human Services



Pacific County Weekly Update

8/26/2020

Meeting Guidelines

- This will be a moderated forum. We ask that everyone participating be respectful and stay on topic. The moderator may select questions as time permits and in order to keep the discussion on topic and appropriate.
- This meeting is being recorded and will be posted on health dept social media and at www.pacificcountycovid19.com
- If you'd like to comment or ask a question, enter your comment in the comment box, or enter your name and you will be called on (as time permits).
- Please try to limit comments to 3 minutes or less.

Agenda & Topics

1. Introductions & Meeting Guidelines (Paul)
2. Local Data Update / Definitions (Stephanie)
3. COVID-19 Health Update: Incubation, Flu Vaccine (Stephanie)
4. Testing Options (Stephanie)
5. Campaign #MaskUpPacificCounty (Katie)
6. Schools Update (Katie)
7. Emergency Rental Assistance Program / Small Business Grants Update (Jamie)
8. Lost Wages Assistance - Unemployment Funds (Jamie)
9. Wellness Resources: Well-Connected for Seniors (Jamie)
10. Question & Answer and Public Comment (Paul)

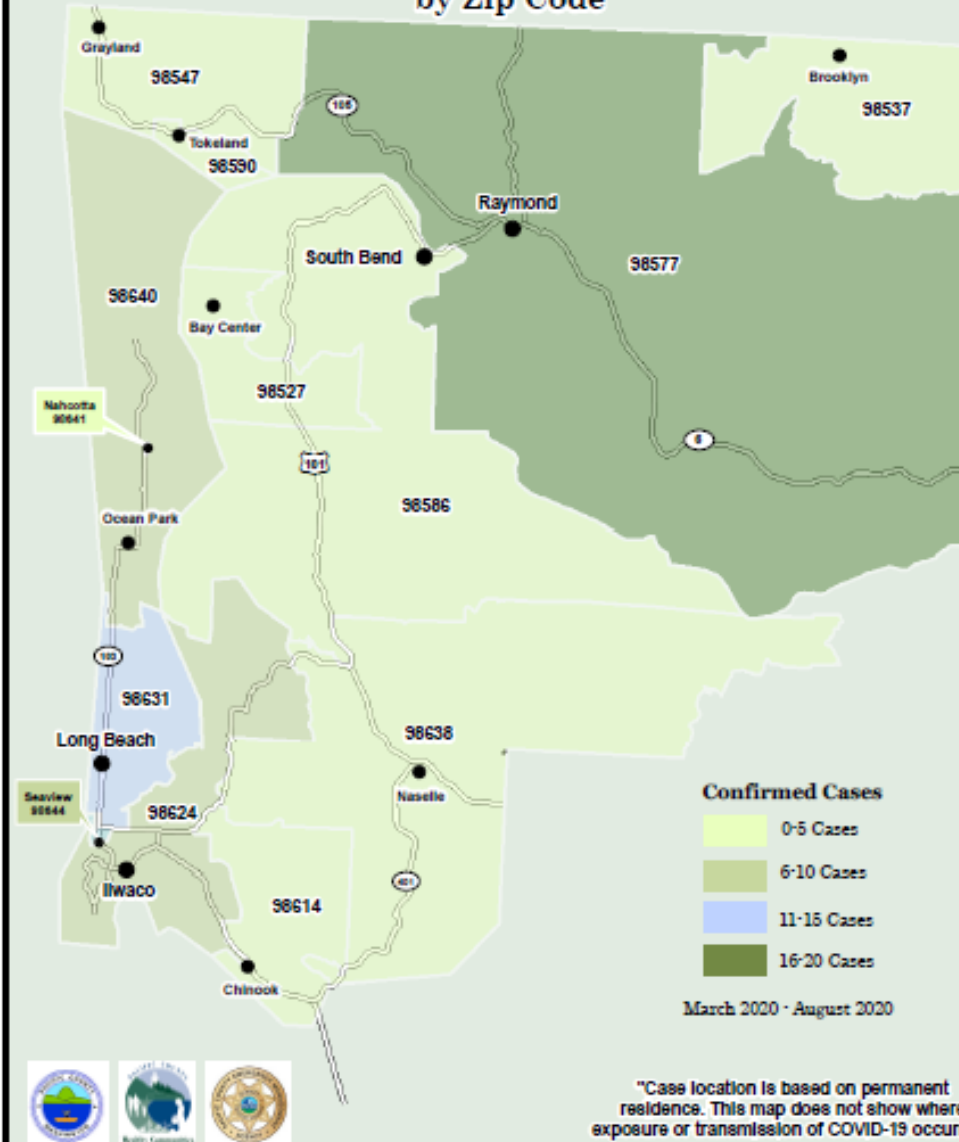
County Data and Case Update	8/5/2020	8/12/2020	8/19/2020	8/26/2020
Confirmed Cases (Total)	43	55	58*	60
<i>Confirmed Cases that resided in Pacific County</i>	37	51	54	56
<i>Active Cases (monitored by Public Health)</i>	19	13	3	2
<i>Probable Cases (monitored by Public Health)</i>	6	0	0	0
<i>Closed Cases (no longer monitored by Public Health)</i>	24	42	55	58
Hospitalizations	6	8	8	8
Deaths	2	2 (1 pending)	2 (1 pending)	3
Percent Deaths (deaths/confirmed cases)	4.7%	3.6% (5.5%)	3.6% (5.5%)	5.0%
Total Tests	1525 - 2061	2320	2702	2922
Percent Positive (confirmed cases/total tests)	2.8% - 2.1%	2.4%	2.1%	2.1%
Percent Positive (7 Day Average):	10.4% - 4.0%	4.6%	0.8%	0.9%
Cases per 100k per 14 days (rolling)	69.3	92.7	54.5	27.2

Updates highlighted

State Generated Dashboard (<https://www.pacificcountycovid19.com/>). Time lag/Correction.

PACIFIC COUNTY

Total Number of Residents Confirmed with Covid-19 by Zip Code



Zip Code Data

- Confirmed case count is specific to each zip code.
- Represents permanent residence of Pacific County COVID-19 cases.
- Not a representation of where COVID-19 exposure or transmission occurred.

COVID-19 Definitions

Active: Monitored by Public Health. Timeline varies, usually no more than 14 days.

Confirmed:

- Meets *confirmatory laboratory evidence*: SARS-CoV-2 RNA in a clinical specimen using a molecular amplification detection test.

Probable (most likely will become “Confirmed”):

- Meets clinical criteria (symptoms) AND epidemiologic evidence (exposure) with no confirmatory laboratory testing performed for COVID-19.
- Meets presumptive (antigen, antibody) laboratory evidence AND either clinical criteria OR epidemiologic evidence.
- Meets vital records criteria with no confirmatory laboratory testing performed for COVID-19.

Closed: Discontinuation of Isolation. No longer monitored by Public Health.

Recovered: No standardized definition. Difficult to determine, but most assume an individual has returned to baseline health prior to COVID-19. Not tracked by Public Health.

Quarantine: Used to keep someone who might have been exposed to COVID-19 away from others to limit the disease spread.

Isolation: Separate people infected with the virus (those who are sick with COVID-19 and those with no symptoms) from people who are not infected.

COVID-19 Health Updates: Incubation

WASHINGTON STATE DEPARTMENT OF HEALTH

COVID-19 From Exposure to Feeling Better



If you were exposed to COVID-19...



1. Stay home.
2. Watch for symptoms.



- Fever
- Cough
- Shortness of breath
- Chills
- Muscle pain
- Headache
- Sore throat
- Loss of taste or smell

Symptoms appear **2 to 14 days** after exposure.



Symptoms typically appear within four or five days after exposure.

We know that a person with COVID-19 may be contagious 48 to 72 hours before starting to experience symptoms. Emerging research suggests that people may actually be most likely to spread the virus to others during the 48 hours before they start to experience symptoms.

COVID-19 Health Updates: Flu Vaccine

Recommendations:

- Routine annual influenza vaccination is recommended for all persons aged ≥ 6 months who do not have contraindications.
- Vaccine should be administered by the end of October
- Vaccination too early in the season (e.g., July or August) may lead to suboptimal immunity later in the season, particularly among older adults.

Resources:

<https://www.cdc.gov/flu/professionals/acip/summary/summary-recommendations.htm>

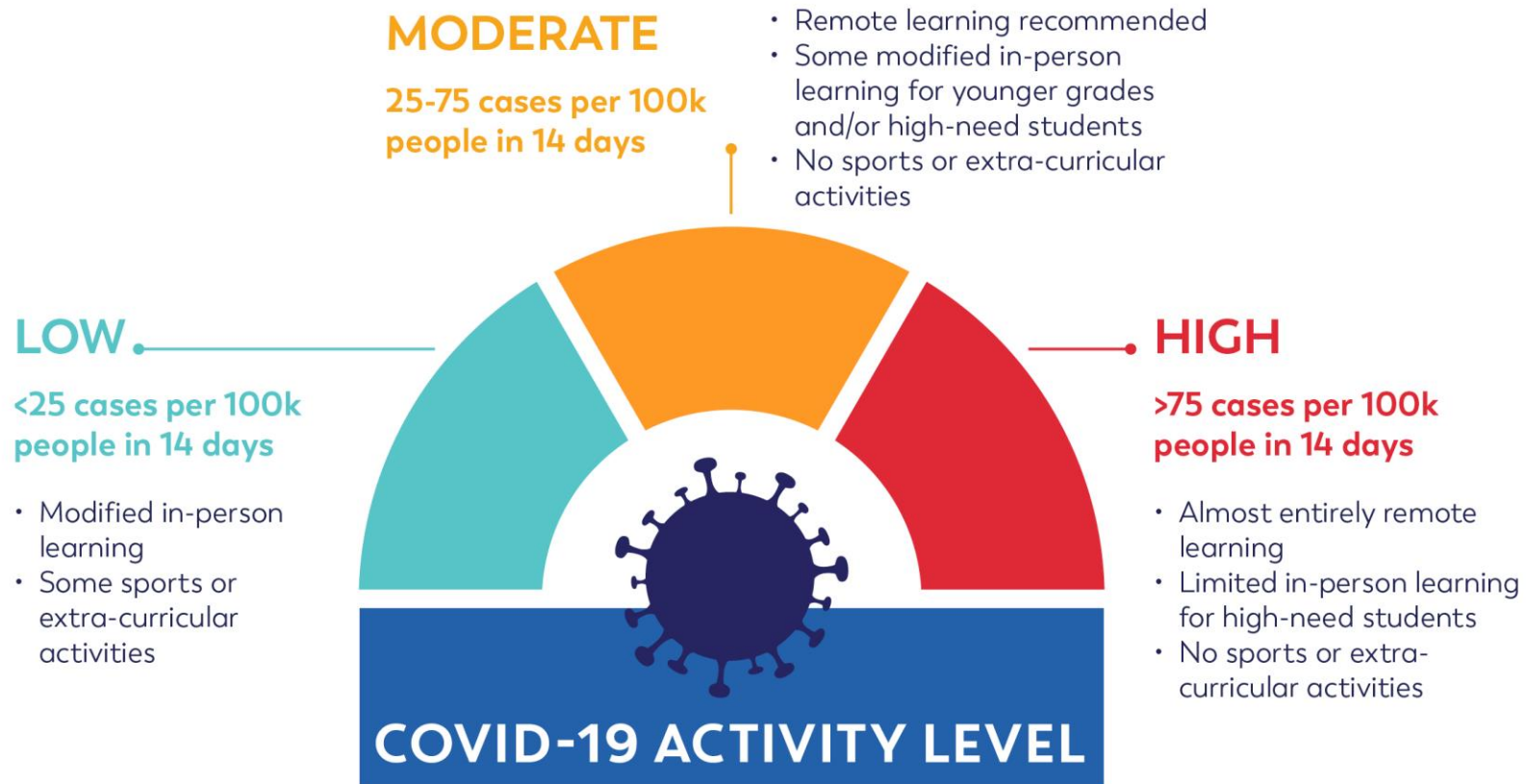
<https://vaccinefinder.org/>

Testing Options

	North County					South County				
Organization	Willapa Harbor Hospital	Shoalwater Bay Medical Clinic (Established Patients)	McCleary Health Mart Pharmacy	Elma/East County Pharmacy	Valley View Health Center (Walk-in Clinic)	Pacific County Drive Through Testing	Clatsop County Health Dept.	Ocean Beach Hospital (Established Patients)	Family Health Center-North Beach (Established Patients)	Columbia Memorial Hospital
Location / Address	800 Alder Street South Bend	2373 Tokeland Rd, Tokeland, WA 98590	115 W Simpson Ave McCleary, WA 98557	221 West Main St Elma, WA 98541	1800 Cooks Hill Rd Suite G Centralia, WA 98531	701 Washington Ave N, Long Beach, WA 98631	1780 Williamsport Rd Astoria, OR 97103	174 First Ave N, Ilwaco, WA 98624	21610 Pacific Way, Ocean Park, WA 98640	Astoria/Warrenton (multiple locations)
Testing Days/Hours	Mon to Thurs 12:00pm to 2:00pm	Call for info/appointment	Register online	Register online	Call for info/appointment	Call for info/appointment	Call for info/appointment	Call for info/appointment	Call for info/appointment	Call for info/appt
Call Information / Website	360-875-4566	1-800-841-2244	https://www.doineeda.com/covid19test/	https://www.doineedacovid19test.com/	360-736-3042	360-642/875-9407	503-325-8500	360-642-3747 Contact Provider	360-665-3000	CMH COVID 19 Hotline: 503-338-4699
Testing Information	No restrictions for Rapid (same day). PCR	Rapid/PCR Provider Decision	PCR	PCR	PCR, Symptomatic, Close Contact	PCR, Symptomatic, Close Contact	PCR, Symptomatic	PCR, Symptomatic, Close Contact Provider Decision	PCR, Symptomatic, Close Contact Provider Decision	Call Hotline



SCHOOL OPENING DECISION FRAMEWORK



Based on Washington State Department of Health guidelines released August 4, 2020.

Reminders!

Pacific County CARES Act Grants for Small Businesses

Due August 28th!

Applications at www.co.pacific.wa.us

Eviction Rental Assistance Program

Email Eric at: rentassistance@co.pacific.wa.us or Call
360-214-9996.

Don't forget to complete your census!

Our community loses over \$2500 per person per year in state and federal funding for each person who isn't counted!***

Lost Wages Assistance - Unemployment Funds

- Washington has been added to the list of states approved for a grant from the Federal Emergency Management Association under its Lost Wages Assistance program.
- The money will allow the state to provide an additional \$300 per week to those currently unemployed due to COVID-19, on top of regular unemployment payments. It is an emergency measure to provide extra benefits for three weeks — the funds are retroactive to the week ending Aug. 1.
- This benefit is currently time-limited to those filing claims over a three-week period, between July 26 and Aug. 15, 2020, and not everyone who has filed an unemployment claim will be eligible.
- The Employment Security Department applied for the grant last week. It comes from a different pot of money than the \$600 per week the federal government authorized under the CARES Act.

Wellness Resource

Well Connected and Well Connected Español (adults aged 60 and over)

Provides laughs, intellectual stimulation, inspiration, conversation and more, all via groups you can join from home, by phone or online.



<https://covia.org/services/well-connected/>

Call in toll-free at a set time each week, with some groups also offering the option to connect via computer, tablet, or mobile device. Most groups last 30-60 minutes with around 12 participants. Newcomers are always welcome! If you don't feel like talking at first, you're welcome to just listen as long as you've let the group know you're there.

Useful Links and Resources

Guidance from Office of Superintendent of Public Instruction (OSPI)

<https://www.k12.wa.us/sites/default/files/public/workgroups/Reopening%20Washington%20Schools%202020%20Planning%20Guide.pdf>

OSPI (Schools) Frequently Asked Questions

<https://www.k12.wa.us/sites/default/files/public/communications/Reopening%20Washington%20Schools%20FAQ%20for%20School%20Districts.pdf>

Guidance for business by phase

<https://www.governor.wa.gov/issues/issues/covid-19-resources/covid-19-reopening-guidance-businesses-and-workers>

Overview of Statewide Face Coverings Requirements

https://coronavirus.wa.gov/sites/default/files/2020-07/Overview%20of%20mask%20order_July20.pdf

Decision Tree for Schools Reopening

<https://www.doh.wa.gov/Portals/1/Documents/1600/coronavirus/DecisionTree-K12schools.pdf>

Washington State Department of Health:

www.coronavirus.wa.gov

Pacific County Health Dept COVID Website:

<https://www.pacificcountycovid19.com>

Reporting violations of safe start plan

<https://app.smartsheet.com/b/form/09349a1c56844b539fea1c2cabd16d56>

LNI COVID-19 Resource Page

<https://www.lni.wa.gov/safety-health/safety-topics/topics/coronavirus>

WA State DOH Hotline:

1-800-525-0127

LNI (Report a Business)

800-423-7233

Liquor Control Board

(360) 664-9878

Next Community Forum:

Wednesday, September 2nd at 11:30 (re-occurring)

<https://us02web.zoom.us/j/84282447783>

1-253-215-8782 meeting id:
84282447783#