

October-December 2023

# Quarterly Prevention Newsletter

## What is the Prevention Newsletter?

The Prevention Newsletter is essentially a newspaper that surrounds all things prevention in Pacific County. Community partners provide program news or updates, including upcoming events, and they are all shared here for you!

A newsletter will be created once a fiscal quarter and be provided to as many programs, businesses, and social media outlets as possible. We hope you enjoy!



## Prevention Topics

- Opioid Misuse
- Suicide
- Alcohol
- Tobacco
- Health Inequity
- Youth Cannabis



## Calendar

Looking for upcoming events in the community? A calendar and flyers are provided towards the back of this newsletter.

**988**  
**24/7 Crisis  
& Support**



**The Prevention  
Newsletter is provided  
by:**  
Pacific County Public  
Health and Human  
Services

# Local Programs, Coalitions, and Businesses

## Pacific County Public Health and Human Services



Pacific County Public Health and Human Services (PCHHD) is a department within Pacific County who works towards health equity in our county while also advising the public on health practices. Our vision is active, healthy families and people of all ages, abilities and cultures living, playing and working together in thriving communities throughout Pacific County.

## Peace of Mind Pacific County



**Mission:** provide education, advocacy and peer support for brain health and mental wellness.

**The Vision:** Peers engaged in recovery through educational programs, workshops, seminars, support groups and collaborative events promoting self-advocacy and hope for recovery of brain health and mental wellness.

**History:** Originally started as a National Alliance on Mental Illness chapter in 2005. Left NAMI amiably in 2016 to become incorporated as Peace of Mind Pacific County, a WA state registered non-profit. Currently waiting on 501c3 approval

Membership is free and open to anyone with an interest in mental wellbeing and brain health. For more information call: 360.642.3448 or email: [info@pompc.org](mailto:info@pompc.org). Find us on Facebook!

## Crisis Support Network



Our agency was established to provide help to those who are the victims of domestic violence, sexual assault, or other violent crime. Please don't wait to seek help. We are here for you now, in a safe, discreet, and professional space. Please go through our website to find services and resources that may just save your life. And remember, you didn't cause the violence. Please get help!

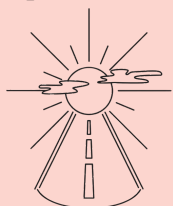
## Wellspring



WellSpring Community Network is a grassroots organization made up of individuals and organizations dedicated to promoting physical, emotional, spiritual, and mental wellness in South Pacific County. Our mission is to support community wellness in South Pacific County through active collaborations.



## Road 2 Resiliency (R2R)



We are a South Bend based prevention coalition, utilizing community collaboration to decrease youth substance misuse. We work with community partners to provide pro-social opportunities for our youth, and education to caregivers, school staff, professionals and our youth. We couldn't do any of this without our wonderful community - come join us!

## True North ESD 113



True North Student Assistance and Treatment Services provides comprehensive behavioral health services to school-aged students. We are a service of Capital Region ESD 113 in Grays Harbor, Lewis, Mason, Pacific, and Thurston counties. True North is certified by the Department of Health as a provider for outpatient and intensive outpatient treatment services.

## Teen Advocacy Coalition



The Teen Advocacy Coalition (TAC) is a youth substance use and suicide prevention coalition that promotes mental health. We serve North Pacific County from Bay Center north, including the Raymond, South Bend, and Willapa Valley School Districts.

TAC organizes a variety of programs and events for both students and the community. These include the After Prom Party, Harvest Festival, 5k Color Run, National Night Out, Movie Night, Holiday Party as well as school based events, Red Ribbon Week, National Drug and Alcohol Facts Week, Sources of Strength, Guiding Good Choices, Second Step, and Youth Mental Health First Aid.

TAC meetings are held the second Monday of every month at 3:30 pm via Zoom or in-person at the Raymond High School Flex Center. We hope you join us!

## Know and Grow



Know and Grow is a partnership of local organizations and individuals interested in creating, promoting and supporting early learning programs and resources for children ages birth-5 in North Pacific County.

**SUPPORT:** Communities, families, caregivers, and providers through parent education, play and learn groups, training support, advocacy, and community involvement.

**CONNECT:** Partners include business owners, schools, libraries, community agencies, early learning organizations, health providers, state agencies, and local, regional, and state-wide elected officials and decision makers.

**INFORM:** Exchange information to support local, regional, and state communication, including data mapping, home visiting, and DCYF efforts around Early Achievers, WaKIDS, and Standards Alignment.

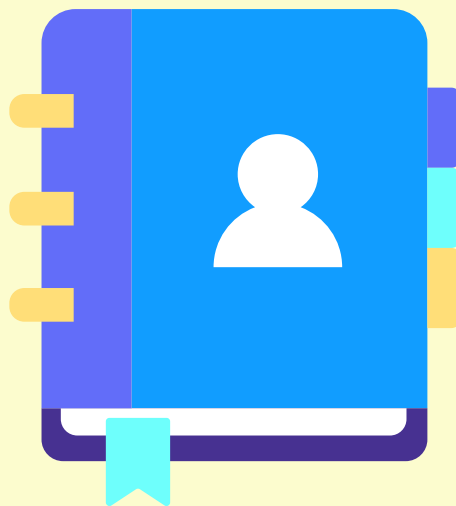
## Valley View Health Center



**Our Mission:** To improve the health and well-being of the community by providing quality and compassionate healthcare services in a patient-centered atmosphere respecting individual and cultural diversity.

**About Us:** Valley View Health Center is a non-profit community health center providing access to medical, dental, behavioral health, pharmacy, and telehealth services to our communities. We have 13 clinics in Lewis, Thurston, and Pacific counties. A sliding fee discount based on family size and income is available. To partner and promote health care in North Pacific County, call our Raymond Clinic at 360.942.3040, email us at [administration@vvhc.org](mailto:administration@vvhc.org), or find us on Facebook!

*Does your program/ business want to be listed as "Local Programs, Coalitions, and Businesses"? Contact the Pacific County Public Health and Human Services Department to submit your information for the next newsletter.*







# EVENTS

## July-September Events Snap Shots

Local programs and businesses always have amazing events happening for the public! Below is a snapshot of some of the events that happened in the last few of months.



Wellspring Coalition Coordinator, Carole, welcoming visitors to the Wellspring table and handing out swag.

### Pack2School

**Wellspring**  
**August 25th**

One photo of PCHHS booth, one photo of Wellspring Booth. Tablers included PCHHS, Wellspring, the library, Dylan Jude Harrell Community Center, POMPC, DSHS Van. Kids got school supplies, new clothes, haircuts, a lunch provided by the Lions, and got to play in a bouncy house.

**Stats:** 435 kids got school supplies, 100 kids got haircuts, 110 large bins and 60 small bins of clothing were distributed to families.





*Willapa Festival ad for Facebook.*

## Willapa Harbor Festival and Pacific County Fair

**Pacific County Teen Advocacy Coalition, Know and Grow, R2R  
August 4th and 5th  
August 24th-26th**

In August, the Teen Advocacy Coalition hosted a table with activities at the Willapa Harbor Festival along with Know and Grow and several other organizations.

We also hosted a table at the Pacific County Fair in collaboration with Know and Grow and the Road 2 Resiliency Coalition. We gave away prizes and had fun activities for families to get to know each of our programs.



*Pacific County Fair collab flyer.*

## 5K Color Run/ Walk

**Pacific County Teen Advocacy Coalition  
September 2nd**

In September, TAC volunteers worked hard to organize our Annual 5K Color Run. This year the race theme was 'Sources of Strength'. The event was a huge success with over 200 participants and 30 volunteers who came out to support.



*5k Color Run/ Walk participant coming through the finish line!*

Thanks to a variety of amazing sponsors, TAC was able to offer free registration to all youth 18 and under and free registration for low income families. Everyone who participated walked away with a free swag bag from Pacific County Guns and Hoses filled with a water bottle from Valley View Medical, fitness towel from Crisis Support Network, Sunglasses from Willapa Harbor Hospital and a variety of other goodies. Other top level sponsors included the Willapa Harbor Health Foundation and Cambia Health Solutions. Thank you to the South Bend Police Department for marking our race route and providing participant support during and after the event. Color Station Sponsors included: Community Integrated Health Services, The Cove Coffee Co., Valley View Medical Center, Willapa Harbor Hospital Quality Team, Know and Grow Coalition, Road 2 Resiliency Coalition, Grays Harbor College TRIO EOC Team, Crisis Support Network and Weyerhaeuser. Thank you to Willapa Septic LLC Sly Dog Portable Toilets for donating two port-a-potties for participants to use, Raise the Bar Designs for producing this year's t-shirts, Atomic Flowers for lending your flatbed for a stage, and Chamber Director Jovon Vaughn for being a wonderful Master of Ceremonies during the event. Lastly, thank you to Alder + Co., Northwest Carriage Museum, Pioneer Select Grocery, Thriftway, Dennic Co., Hidden Coast Hair Design, Las Maracas, South Bend Pharmacy and Smith Farm Pumpkins for all of the generous donation to the raffle baskets.



Pacific County Public Health Educators, Emily Singharath and Myranda Heckard, hand out dental bags to youth.

## Early Learning Center Resource Expo and Open House

***Pacific County Health Dept. (participant)  
Sept. 21st***

On September 21st, the Early Learning Center in South Bend hosted a local resource expo and open house for the community. Many local coalitions and businesses tabled at this event, including Pacific County 911 - PACCOM, Raymond Timberland Library, South Bend Timberland Library, South Bend Police Department, Pacific County Public Health & Human Services, Know and Grow, Know and Grow Partnership for Early Learning, Visions for Early Learning, and BASICS NW. Pacific County Health Department participated in this event by providing youth dental bags, WA Quitline cards, and other local assistance information including the Resource Guide.



## Meeting Announcement



**Teen Advocacy Coalition (TAC)** is always looking for new members! Our General Meetings are held the second Monday of every month at 3:30PM. Hope to see you there!

## Meeting Announcement

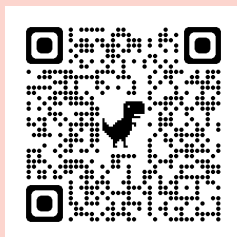


**Know and Grow** is always welcoming of new members! Our general meetings are held on the third Monday of each month from 2-3:30. If you are interested in getting on the mailing list please submit your email contact to: [knowandgrowpacificco@gmail.com](mailto:knowandgrowpacificco@gmail.com) ATT: Rhonda Johnson

## Interested in reading last quarter's newsletter?

Each fiscal quarter, a new Prevention Newsletter is made and distributed to the community. Every newsletter will be available to read on the Pacific County COVID-19 website when completed. Please visit the page below via website URL or QR code to see the April-June newsletter.

<https://www.pacificcountycovid19.com>



July-September 2023

### Quarterly Prevention Newsletter

#### What is the Prevention Newsletter?

The Prevention Newsletter is essentially a newspaper that surrounds all things prevention in Pacific County. Community partners provide program news or updates, including upcoming events, and they are all shared here for you!

A newsletter will be created once a fiscal quarter and be provided to as many programs, businesses, and social media outlets as possible. We hope you enjoy!



#### Prevention Topics

- Opioid Misuse
- Suicide
- Alcohol
- Tobacco
- Health Inequity
- Youth Cannabis



#### Calendar


Looking for upcoming events in the community? A calendar and flyers are provided towards the back of this newsletter.



#### 988 24/7 Crisis & Support

The Prevention Newsletter is provided by:  
Pacific County Public Health and Human Services





## Make sure your contact information is up to date!

If you have Apple Health (Medicaid)  
coverage and have moved in  
the last three years,  
visit [wahealthplanfinder.org](https://wahealthplanfinder.org)  
or call **1-855-923-4633**  
to update your  
contact information today.



<https://vvhc.org/did-you-receive-your-apple-health-medicaid-renewal-notice/>



## Make sure your contact information is up to date!

If you have Apple Health (Medicaid)  
coverage and have moved in  
the last three years,  
visit [wahealthplanfinder.org](https://wahealthplanfinder.org)  
or call **1-855-923-4633**  
to update your  
contact information today.



<https://vvhc.org/did-you-receive-your-apple-health-medicaid-renewal-notice/>

# Apple Health & the End of the Public Health Emergency

During the COVID-19 public health emergency (PHE), the Health Care Authority (HCA) and the Department of Social and Health Services (DSHS) extended coverage for all Apple Health (Medicaid) clients. This extension ended on March 31, 2023, due to the Consolidated Appropriation Act, 2023.

## What Does This Mean for Individuals and Families with Apple Health?

HCA and DSHS resumed normal operations April 1, 2023. Individuals who have coverage through Apple Health should be receiving a renewal notice prior to the end of their renewal period between April 2023 and February 2024. Some individuals may have received 90-day extension in May, so June will be the first month that individuals will not receive extensions and potentially lose coverage.

## How were Medicaid (Apple Health) Clients Notified?

- HCA and MCO plans are sending out letters and postcards requesting they update contact information and renew their coverage.
- HCA and MCO plans purchased radio and streaming service ads to inform impacted members.
- VVHC has been providing this information by:
  - Sharing the attached postcard at Community Events, at the Front Desk, in our Pharmacy Rx Bags, and with our Community Partners.
  - Reaching out to patients who we know are going to lose coverage soon.
  - Posting information to our website and Facebook page.

## What Happens If an Individual Does Not Renew by their Renewal Date?

- They may lose their coverage.

## How Can You Help?

- Encourage your friends, family members and clients with Apple Health to update their contact information with their MCO plan or with the HCA.
  - If they don't know their renewal date, encourage them to contact their MCO plan or contact HCA's Medical Assistance Customer Service Center at 800-562-3022.
  - If their renewal date has passed, encourage them to contact us to schedule an appointment with enrollment at 360-330-9595. These appointments can be scheduled to

be by phone if in Pacific County (or in person at our Chehalis Office).

### MCO plan contact information:

- Amerigroup 800-600-4441
- Community Health Plan of Washington 800-440-1561
- Coordinated Care 877-644-4613
- Molina 800-869-7165
- United Health Care 877-542-8997

If you would like postcards to share at your organization, please email [sfreeman@vvhc.org](mailto:sfreeman@vvhc.org)







Peace of Mind has been busy the past few months; Koffee Hour has had several guest speakers covering nutrition, the aging brain and strategies for preventing falls, the Men's Peer Support Group is going strong, and Art for a Healthy Mind and Music and Movement for a Healthy Mind have been well attended.

We are deep in the planning stages for all of our May Awareness Events, including our Annual Wellness Walk featuring the

Mega Brain (an inflatable brain you can walk through), Rock for Mental Health (painted rocks with partner Timberland Libraries), Dine Out for Mental Health at local restaurants, and our fundraiser Hope Floats 2. Look for our float in the LB Loyalty Days Parade too! For more information, see our FB page, our website [www.pompc.org](http://www.pompc.org) or call (360) 642-3448

## **Pacific County FYSPRT (Family, Youth, and System Partner Round Tables) Meeting**

Open to the community! FYSPRT provides a forum for families, youth, systems, and communities to strengthen sustainable resources by providing community-based approaches to address the individual behavioral health needs of children, youth, and families. All that attend over the age of 7 years old can receive a \$15 gift card after filling out a survey that will be sent out after the meeting. The meeting happens the 1st Thursday of the month at 4:00 p.m. – 5:00 p.m.

<https://www.grbhaso.org/fysprt>



### **Microsoft Teams meeting**

Join on your computer,  
mobile app or room device  
Meeting ID: 290 891 059 792  
Passcode: N3azFc

***Does your program/ business have events that are based around prevention or community involvement? You can have a snapshot of them added to the Prevention Newsletter (or added to the calendar if it's a future event)! Contact the Pacific County Public Health and Human Services Department to submit your information for the next newsletter.***





## Programs Announcement



**South Bend Early Learning Center** strives to meet families where they are to provide a whole family approach that affirms learning and development are interrelated. South Bend ELC is an ECEAP site whose goal is to serve those families with the greatest need for services. **ECEAP** is free preschool that supports child development and health. ECEAP also provides free developmental screenings for vision, dental, and behavior. Parents are encouraged to become involved in Parent Policy Council which is a monthly group discussion opportunity led by ELC staff. Parent education classes will be available using Conscious Discipline, Ready Rosie, and Second Step curriculums.

For more information about programming or to enroll your child in preschool and/or child care please call (360) 875-5327 opt 1.

## Lifeline and 988

988 has been designated as the new three-digit dialing code that will route callers to the National Suicide Prevention

Lifeline (now known as the 988 Suicide & Crisis Lifeline), and is now active across the United States. When people call, text, or chat 988, they will be connected to trained counselors that are part of the existing Lifeline network. These trained counselors will listen, understand how their problems are affecting them, provide support, and connect them to resources if necessary.

The previous Lifeline phone number (1-800-273-8255) will always remain available to people in emotional distress or suicidal crisis.

<https://988lifeline.org/>

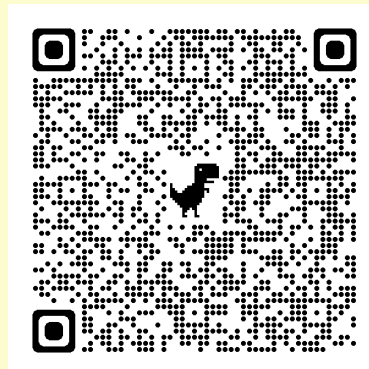
## Pacific County Resource Guide

Pacific County Public Health and Human Services is proud to announce that the NEW Pacific County Resource Guide is ready and available to the public!

### ***What is the Resource Guide?***

The Resource Guide is a comprehensive list of all of the agencies and programs available to the public in Pacific County. They are sorted by their purpose or niche, including support groups, veterans, and healthcare. You can scan the QR code to the right to access the electronic version.

*Printout available through the Pacific County COVID-19 website!*





# Calendar for December 2023 (United States)

December						
Sun	Mon	Tue	Wed	Thu	Fri	Sat
					1	2
3	4	5	6	7	8	9
10	TAC General Meeting @ 3:30	12	13	14	15	16
17	18	19	20	21	22	23
Christmas Eve	MERRY CHRISTMAS	26	27	28	29	30
New Year's Eve						
Phases of the Moon: 5:☾ 12:● 19:☾ 26:☾						
Holidays and Observances: 24: Christmas Eve, 25: Christmas Day, 31: New Year's Eve						

## Upcoming Events

<b>Harvest Festival</b> October 27th 3pm-8pm October 28th 1pm-8pm <b>Teen Advocacy Coalition</b>	Teen Advocacy Coalition has brought back Harvest Festival with craft and food vendors, kid activities, haunted barn, Trunk or Treat and much more. 2 full days of fun out at the Menlo Fairgrounds.
<b>Prescription Drug Takeback</b> October 28th 10am-2pm <b>Teen Advocacy Coalition</b>	Mark your calendars for August 24-26, 2023, as we invite you to join us for a remarkable celebration under the theme of "Let's Steer Up Some Fun!" Get ready for a spectacular showcase of delectable treats, live entertainment, agricultural exhibits, and so much more. Get ready to create cherished memories that will last a lifetime at the Pacific County Fair!



## Recurring Events/ Meetings

<b>Community Awareness Dinner</b> <i>TBA</i> <i>Peace of Mind</i>	Community Awareness Dinners are a community learning experience in collaboration with our various partners. Held once quarterly.	<b>Music and Movement for a Healthy Mind</b> <b>4th Wednesday</b> <i>Peace of Mind</i>	4th Wed at Ocean Park Lutheran Church
<b>TAC General Meeting @ 3:30</b> <i>TAC</i>	General Meetings are held the second Monday of every month at 3:30PM.	<b>Weekly Wellness Walk</b> <b>11 am</b> <i>Peace of Mind</i>	11:00 a.m. Golden Sands Walking Path, Ocean Park
<b>KC's Koffee Hour</b> <i>1st and 3rd Wednesday at 1pm</i> <i>Peace of Mind</i>	1st and 3rd Wed. 1:00 p.m. at Ocean Park Lutheran Church		
<b>Art for a Healthy Mind</b> <i>2nd Wednesdays at 1pm</i> <i>Peace of Mind</i>	2nd Wed 1:00 p.m. at Ocean Park Lutheran Church		
<b>Youth Art for a Healthy Mind</b> <i>Peace of Mind</i>	In collaboration with Dylan Jude Harrell Community Center		
<b>Men's Support</b> <i>2nd and 4th Wednesdays at 5:15pm</i> <i>Peace of Mind</i>	2nd and 4th Wed 5:15 p.m. Whalebone House Cottage, Ocean Park		



CELEBRATING 20 YEARS

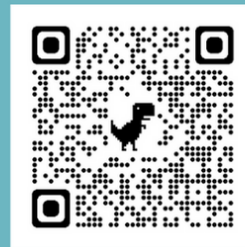


## WASHINGTON STATE QITLINE

Since 2000, the Washington State Quitline has helped tens of thousands of Washingtonians quit smoking. You can get free, confidential, one-on-one counseling from a Quit Coach, and may be eligible for free medication to help you quit smoking, vaping, or other tobacco. Register by:

- Calling 1-800-QUIT-NOW (1-800-784-8669);
- Visiting [quitline.com](https://quitline.com); or
- Texting READY to 200-400.

**Not ready just yet?** Learn more about the Quitline and other counseling options on the Washington State Quitline website.



---

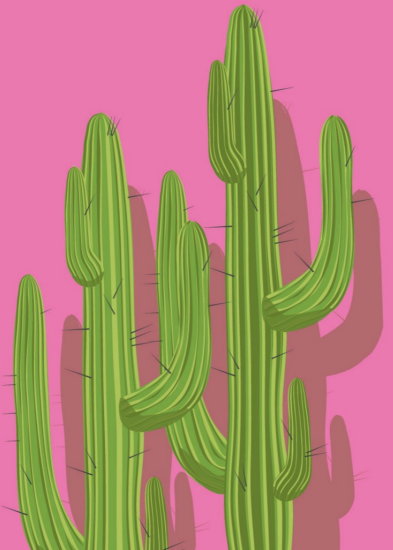
### Free help quitting

You can quit for free. Ask your health care provider about quitting or choose from the available free programs (listed on the website) to help you quit and stay quit.

**Text READY to 200-400 or**  
**Call 1-800-QUIT-NOW**  
**(1-800-784-8669)**







SECURE YOUR CANNABIS

## NATURAL ≠ SAFE FOR KIDS

A cactus is natural, but not necessarily child-friendly. Same goes for cannabis.

Cannabis impacts a child's brain differently than an adult's.

## SECURE YOUR CANNABIS

Learn more at [bit.ly/secureyourcannabis](https://bit.ly/secureyourcannabis)

Most Washington teens are not using cannabis, yet 1 in 3 Washington State 10th graders in 2021 said cannabis was easy to get. To protect young minds you can know the Washington laws, start talking with youth about underage cannabis use and keep cannabis secure.

NARCAN® (naloxone HCl) Nasal Spray is an opioid antagonist indicated for the emergency treatment of known or suspected opioid overdose, as manifested by respiratory and/or central nervous system depression. NARCAN® Nasal Spray is intended for immediate administration as emergency therapy in settings where opioids may be present. NARCAN® Nasal Spray is not a substitute for emergency medical care.

*If you need a box of naloxone to keep on hand, please visit the Pacific County Health Department office in either South Bend or Long Beach.*





PLEASE JOIN US FOR



PACIFIC EVENTS DISTRICT 3RD ANNUAL

# Harvest Festival

FRIDAY OCTOBER 27TH 3-9PM

SATURDAY OCTOBER 28TH 1-8PM

**FREE FAMILY FUN**

*Home of the Trunk or Treat!*

HAUNTED HORSEBARN, HAYBALE TOSSING COMPETITION, FACE PAINTING, MUSIC,  
FOOD & DRINKS, LOCAL VENDORS, FREE GAMES AND ACTIVITIES FOR KIDS AND MORE!!

THIS YEARS FESTIVAL IS DEDICATED TO OUR BIGGEST FAN KAM HOLLOWAY

---

5 FAIR LN., RAYMOND, 98577

ANY QUESTIONS CONTACT JESS YEARTOUT @360 590 2401







## Wild Land Urban Interface How you can help

### WUI

Studies show that as many as 80 percent of homes lost to wildland fire may have been saved if a defensible space had been cleared of the brush around the homes.

### Preventable measures you can take.

Protecting your property from wildfires is crucial for homeowners, and taking necessary precautions is essential. You can prepare your home to withstand airborne embers and prevent flames or surface fire from reaching your home. Creating a defensible space is an effective way to reduce the risk of fire damage. This involves establishing a buffer zone between your buildings and the surrounding wildland area. The defensible space can be divided into three zones.



By establishing a defensible space, which involves creating a buffer zone between your buildings and the neighboring wildland area, homeowners can diminish the risk of fire damage. This space can be separated into three zones.

#### 0 to 5' Zone 1 Immediate Zone

- This zone is the most critical area for homeowners to focus on for fire safety.
- Use hardscape like gravel, pavers, concrete and other noncombustible mulch materials. No combustible bark or mulch
- Create a space that is easily accessible for conducting fire suppression activities.
- Eliminate any dead or dying vegetation such as weeds, grass, plants, shrubs, trees, branches, and vegetative debris like leaves, needles, cones, and bark. It is also crucial to inspect your roof, gutters, decks, porches, stairways, and other outdoor structures for any potential fire hazards.
- Display your address prominently on your home and at the driveway intersection. Reflective numbers should be at least four inches tall and visible in smoke or at night. Address signposts are \$20.00 at Fire District 1 for fire district residents.



### Peninsula Fuels.

Common sources of wildland fuel within Fire District 1 include beach grasses, low shrubs, common gorse, scrub pine, spruce trees, underbrush, and dead logs. These fuels create a highly flammable environment characterized by an accumulation of dry foliage at the base of plants and stands. Wildfire risk is influenced by factors such as weather conditions, topography, and the presence of dry vegetation like dune grass or brush which can easily ignite and spread fire rapidly, posing a threat to homes and property. Areas with an abundance of dry and dead vegetation can amplify the fuel for a fire to burn.

#### 5' to 30' Zone 2.

##### Lean, Clean and Green Zone

- Remove all dead plants, grass, and weeds (vegetation).
- Remove branches that hang over your roof and keep dead branches 10 feet away from your chimney.
- Additionally, it is important to conduct regular maintenance, such as pruning and weed removal, to reduce fuel.
- Remove or prune flammable plants and shrubs near windows.
- Create a separation between trees, shrubs and items that could catch fire, such as patio furniture, wood piles, swing sets, etc.





We understand the importance of protecting your home and property from the devastating effects of wildfires. We encourage you to take proactive measures towards wildfire prevention. If you have any questions or concerns about wildfire prevention, please do not hesitate to reach out to us. Our knowledgeable and skilled team is available to provide you with the guidance and information you need to safeguard your home against wildfire.

Additionally, if you are interested in having a site visit to assess the potential risks for wildfire and to develop a customized prevention plan for your property, we would be more than happy to meet with you. It is our priority to ensure that you have the knowledge and resources necessary to protect your home and loved ones from the threats of wildfire.

**PACIFIC COUNTY FIRE  
DISTRICT #1  
(360) 665-4451**

## Defensible Space

### 30' to 60' Zone 3 Reduce Fuel Zone,



Clear any trees and brush that could obstruct the fire truck's path or reduce visibility of the driveway. Clear trees, branches, and brush from your driveway so that it is at least 12 feet wide and has at least 13.5 feet of vertical clearance to allow fire trucks access.



### What do I do with the yard waste after cleaning up?

Firewood can be made from sticks and logs. The regulation of burning yard waste varies by location, so if you choose this option, make sure to check with PCFD1 for the appropriate burn permit.

- Chipped yard waste is a sustainable alternative to landfilling, which reduces the environmental impacts associated with landfills it is a natural fertilizer

Landscaping – the goal here is not to eliminate fire but to interrupt fire's path and keep flames smaller and on the ground.

- Cut or mow grass down to a maximum height of 4 inches.
- Create horizontal space between shrubs and trees. Trees/clumps of trees should have a minimum of 18' between treetops.
- Remove ladder fuels (vegetation under trees) so a surface fire cannot reach the crowns. Prune trees up to six to ten feet from the ground; for shorter trees do not exceed 1/3 of the overall tree height.
- Remove fallen leaves, needles, twigs, bark, cones, and small branches.
- Structures separate from the main building, exposed wood piles, and storage tanks for Liquid Propane Gas and should have a minimum of 10 feet of clearance, down to bare mineral soil, in all directions. In addition to clearing the area around the propane tank, it is also important to ensure that the tank is professionally installed and maintained.

### Maintaining the Trees on Your Property

- Trees are permitted within the defensible space if the horizontal distance between the crowns of adjacent trees and the crowns of trees and, structures, overhead electrical facilities, or unmodified fuel is at or greater than 18 feet.
- Portions of tree crowns that extend to within 10 feet (3048 mm) of the outlet of a chimney shall be pruned to maintain a minimum horizontal clearance of 10 feet (3048 mm).
- Deadwood and litter should regularly be removed from trees.
- Remove dead or diseased trees (hazard trees) that have weakened or unstable roots and branches and are more likely to fall or break during high winds, heavy snow, or ice storms and cause damage to the structure or obstruct evacuation routes.

**Call the Department of Community  
Development before any hazard tree removal.  
360-642-9382**



**988**  
SUICIDE  
& CRISIS  
LIFELINE

## How Our Calls Are Routed

### THE LIFELINE PHONE SYSTEM

The 988 Suicide & Crisis Lifeline provides free and confidential emotional support to people in suicidal crisis or emotional distress 24 hours a day, 7 days a week, across the United States.

The Lifeline is funded by the Substance Abuse and Mental Health Services Administration (SAMHSA) and administered by Vibrant Emotional Health.



The Lifeline is made up of a network of over 200 independently owned and operated local centers. To reach the Lifeline, call 988 or chat at 988lifeline.org

The Lifeline network was designed to connect callers with local crisis centers, by using a phone system that routes calls based on the caller's phone number.

### WHAT HAPPENS WHEN SOMEONE CALLS THE LIFELINE?

When someone calls 988, they will hear our automated greeting message that features additional options:

“

You have reached the 988 Suicide & Crisis Lifeline, also serving the Veteran Crisis Line. Para Español oprima el número dos. If you are in emotional distress or suicidal crisis, or are concerned about someone who might be, we are here to help.

If you are a US military veteran or current service member, or calling about one, please press 1 now. Otherwise, please hold while we route your call to the nearest crisis center in our network.

”



We'll play a little music while we connect the caller to a skilled, trained crisis counselor.

Our phone system will route the call to the closest crisis center in the Lifeline network based on area code.

Each crisis center picks their coverage area (which can be defined by zip code, area code, county or even state), and their hours of operation.



A trained crisis counselor at a local center will answer the phone.



This person will listen to the caller, work to understand what the caller is experiencing, provide support, and collaborate with the caller on ways to feel better and connect with any needed help or resources.

### CALL FLOW

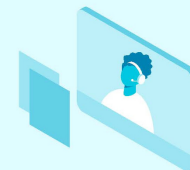


### WHAT HAPPENS WHEN SOMEONE CHATS WITH THE LIFELINE?



When someone uses the Lifeline chat via <https://988lifeline.org/chat/> they'll first complete a short survey letting the crisis counselor know a little about their current situation, and then see a wait-time message while they are connected to a crisis counselor.

A trained crisis counselor will answer the chat, converse with the chatter to understand how their problem is affecting them, provide support, and share resources that may be helpful.



### WHAT HAPPENS WHEN SOMEONE TEXTS THE LIFELINE?



When someone texts 988, they will complete a short survey letting the crisis counselor know a little about their current situation.

They will be then connected with a trained crisis counselor, who will interact with them to understand what the texter is experiencing, provide support, and connect them with any needed help or resources.





**Pacific County TAC**  
*Keeping Youth Healthy, Safe and Valued*  
[www.pacificcountytac.org](http://www.pacificcountytac.org)

---

# JOIN US FOR OUR MEMBER MEETUP

---

**Every 2nd Monday of the Month @ 3:30PM**

**In Person: Raymond Flex Center 1016 COMMERCIAL ST  
RAYMOND, WA 98577**

**or**

**Visit our Website for the Zoom link:**

**[www.pacificcountytac.org](http://www.pacificcountytac.org)**





## Willapa Commons

- Presented by -

Willapa Behavioral Health and Wellness

### Available Resources For Our Patrons

- Access to Internet
- Healthy Snacks
- Water/Coffee
- Board Games
- Connection to Resources

### A gathering place where people...

- Struggling with mental health or recovery can come to relax and feel safe.
- Struggling with their mental health or recovery can connect and feel a sense of community.
- Can receive help in maintaining their sobriety.
- Can talk with a certified peer counselor.
- Can receive help finding resources.
- Can participate in and help plan fun activities.



25902 Vernon Ave. Ste. B  
Ocean Park, WA 98960

Hours of Operation:  
Monday – Friday 9:00-5:00

Contact:  
Andrew King at 360-214-8984 or  
[kinga@willapabh.org](mailto:kinga@willapabh.org)

### Donations Are Always Welcome

#### Things we can use:

- Monetary donations
- Sugar
- Coffee/Coffee Creamer/Disposable Cups
- Healthy Snacks/Food
- Toothbrush/Paste & holder
- Laundry Mat Vouchers
- Bus Passes
- Underwear/Sweatpants & shirts/T-Shirts



Willapa Behavioral Health and Wellness

- Presents -

## Families First

### Example of Skills Taught

- Positive Communication
- Positive/Supportive Relationships
- Disciplining without anger/violence
- Problem Solving/Consequential thinking
- Anger Management
- Other skills targeting identified needs

### Who Does Families First Serve?

The youth, parents, and families referred to the program may have a variety of emotional and behavioral challenges. Some youth/families have been diagnosed with mental illnesses, some may be ungovernable, and others are reacting poorly to struggling family environments.

Families First can be very helpful to youth and families who are incarceration-impacted, corrections involved, or have experienced inpatient behavioral health treatment and are coming back into the home.

### What is Families First

- Behavioral intervention that works with families in their own homes
- Program is approximately 8-12 weeks, 6-10 hours a week depending on need
- Builds skills targeting family goals and needs through teaching, modeling, and role-playing
- Active teaching to engage family members
- Focus on individual and family strengths
- Negative behaviors typically decrease by 27 points (as measured by the Youth Outcome Questionnaire), a 13-point change is clinically significant
- Follow-up is available based on parent/guardian preference

Contact: John Good 360-227-1676 or [goodj@willapabh.org](mailto:goodj@willapabh.org)





*"Caregiving often calls us to lean  
into love we didn't know  
possible." \**

# Caregiver Support Group

First Thursday of the month

1:00 - 2:00

Naselle Clinic

Contact: 360-642-6330

[rcassidy@oceanbeachhospital.com](mailto:rcassidy@oceanbeachhospital.com)

The Caregiver support group meets the **first Thursday of every month** and offers a safe place to discuss the stresses, challenges, and rewards of providing care for a love one.

All are welcome; share your experience, advice, and support to other caregivers.

Light snacks will be provided.



\* Tina Walker, *The Inspired Caregiver: Finding Joy While Caring for Those you Love*





A behavioral health agency

**Call Today!**  
**360.261.6930**  
**www.cihealthservices.com**

Community Integrated Health Services (CIHS) is open to serve you out of 10 locations in our five-county service area (Cowlitz, Grays Harbor, Lewis, Pacific, and Wahkiakum). CIHS provides in-office and community-based behavioral health services.



## OUR SERVICES ARE AVAILABLE IN-PERSON, VIDEO, OR BY PHONE.

CIHS provides in-person services whenever possible. We also offer Telehealth services (video and phone) to individuals covered by Medicaid for mental health, substance use treatment, and assessments.

*CIHS provides behavioral health services at the following locations:*

### COWLITZ:

- 1116 14th Ave  
Longview, WA
- 1128 Broadway St  
Longview, WA

### GRAYS HARBOR:

- 618 W Market St  
Aberdeen, WA
- 110 W Market St STE 205  
Aberdeen, WA

### LEWIS:

- 1707 Cooks Hill Rd  
Centralia, WA
- 1616 S Gold St STE 4  
Centralia, WA
- 1720 S Gold Street  
Centralia, WA

### PACIFIC:

- 335 Third St  
Raymond, WA
- 152 First Ave N  
Ilwaco, WA

### WAHIAKUM:

- 427 Columbia Street  
Cathlamet, WA 98612

**360.261.6930**

[www.cihealthservices.com](http://www.cihealthservices.com)

## Our Programs

### General Outpatient Services *(available in all five counties)*

- \* Services for adults, children, and families in need of behavioral health support

### Flexible Assertive Community Treatment (FACT) *(available in Cowlitz, Grays Harbor, & Lewis Counties)*

- \* FACT provides 24/7 and after-hours services for people with mental health needs and a history of multiple visits to an ED, inpatient psychiatric hospitalizations, and/or contacts with law enforcement related to their behavioral health challenges.

### Wraparound with Intensive Services (WISe) *(available in all five counties)*

- \* WISe provides 24/7 and after-hours services in the home to support youth with intensive mental health needs and their families.

### School-Based Services *(available in Cowlitz, Lewis, & Pacific Counties)*

- \* By referral, in-person counseling provided in the school setting (or telehealth during pandemic lockdown).

### Substance Abuse Program *(available in Cowlitz, Grays Harbor & Lewis Counties)*

- \* SUD outpatient and intensive outpatient program provides SUD assessments and coordinates detox and residential inpatient placements. Services for adults and youth.

### School-Threat Assessment Care Coordination (S-TACC) *(available in Cowlitz & Lewis Counties)*

- \* Behavioral health monitoring of a child expelled from having made targeted threats of violence toward the school or community (services are provided in home or via telehealth).

### Trueblood Jail Diversion *(available in all five counties)*

- \* The Trueblood Jail Diversion team engages and assesses incarcerated individuals with mental health issues to assist them in setting up basic needs, meeting court requirements, and developing healthy practices in order to reduce recidivism.

### Jail Transition *(available in Cowlitz, Grays Harbor, & Pacific Counties)*

- \* Jail Transition works with arrested and incarcerated individuals needing behavioral health care, providing interim assessment and therapy, and helping them transition to a provider in the community.

### Peer Bridges *(available in all five counties)*

- \* Provide lived-in support, guidance, and hope to those discharging from Western State Hospital.

### EAP *(available in Cowlitz, Grays Harbor, & Lewis Counties)*

- \* Our Employee Assistance Program provides up to 6 free confidential counseling sessions to help employees deal with family, work, and other life challenges. This is a contracted employer-paid program.

### Intensive Residential Treatment (IRT) *(available in all five counties)*

- \* IRT provides 24/7 and after-hours services for people who are discharging from Western State Hospital or residential mental health facilities and need assistance with transitioning to the community.



# Worried about losing your home?

Funding and support is available

Call our hotline today at

**1-877-894-4663**

We speak over **200** languages!



## No Citizenship Requirement

- ✓ You **don't** need to be a U.S. citizen to be eligible.
- ✓ We **don't** track citizen or immigration status for you or any member of your household.
- ✓ This help is **free**.

## What can I expect?

Washington HAF connects you with a housing counselor within your area who provides **free** and **confidential** support. They can assist you with applying for funding and many other options to prevent foreclosure. Call the Hotline at **1-877-894-4663** for a no-cost assessment.

## Beware of scams!

Don't pay anyone who offers to help you for a fee. Washington HAF is the only program authorized to distribute HAF funds in Washington state.



**Washington HAF**  
Homeowner Assistance Fund

This program or project was supported, in whole or in part, by federal award number HAF0025 awarded to the Washington State Housing Finance Commission by the U.S. Department of the Treasury.

For more  
information visit:  
**WashingtonHAF.org**



**Scan Me**



# Coalition and Program Contacts

**Jessica Verboomen**

PCHHD  
Behavioral Health Program Manager  
(360) 875-9343  
ext. 2638  
jverboomen@co.pacific.wa.us

**Princess Klus**

PCHHD  
Program Coordinator  
(360) 875-9300  
ext. 2628  
pklus@co.pacific.wa.us

**Abigail Bentley**

PCHHD  
Health Educator  
(360) 642-9349  
ext. 2626  
abentley@co.pacific.wa.us

**Carole Chase**

Wellspring Community Network  
Coordinator  
(360) 642-9349  
ex. 2640  
cchase@co.pacific.wa.us

**Emily Singharath**

PCHHD  
Public Health Educator  
(360) 875-9343  
ext. 2643  
esingharath@co.pacific.wa.us

**Paul Karnatz**

Teen Advocacy Coalition  
Coordinator  
360-984-4199  
pacificcountytac@gmail.com

**Nikki Fortuna**

Peace of Mind  
President  
(360) 642-3448

**Alexis Hood**

Early Learning Center  
Home Visitor/ Parent  
Engagement Specialist  
ahood@southbendschools.org

Download/ View the  
Newsletter

*Have a program, coalition, or event you would  
like highlighted in the Prevention Newsletter?  
Please contact the Pacific County Health  
Department ASAP to get into the next  
newsletter in September, 2023!*

