



Public Health & Human Services



# Pacific County Weekly Data

## 11/4/2020

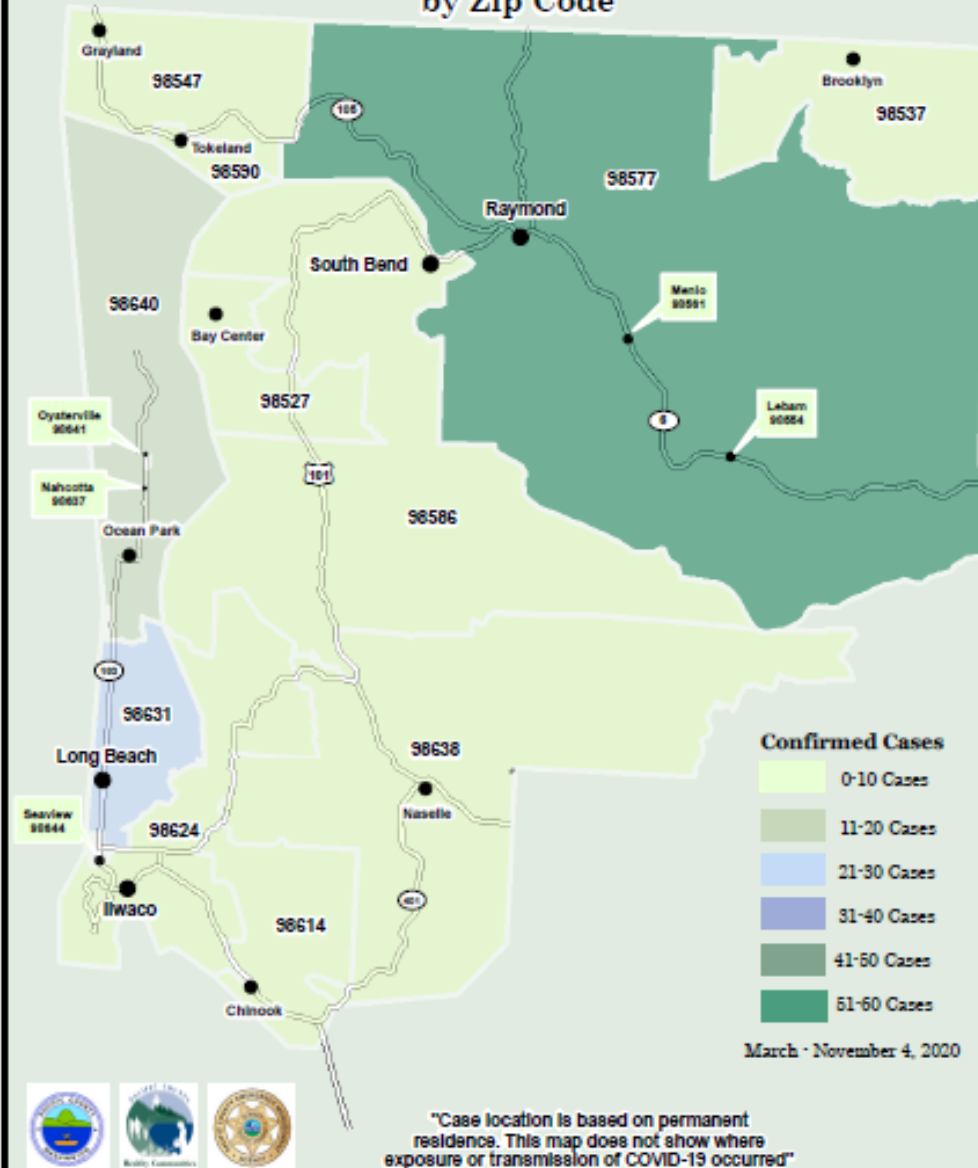
<b>County Data and Case Update</b>	<b>10/14/2020</b>	<b>10/21/2020</b>	<b>10/28/2020</b>	<b>11/4/2020</b>
<b>Confirmed Cases (Total)</b>	107	115	120	122
<i>Confirmed Cases that resided in Pacific County</i>	104	112	117	119
<i>Active Cases (monitored by Public Health)</i>	21	10	10	14
<i>Probable Cases (monitored by Public Health)</i>	4	3	2	12
<i>Closed Cases (no longer monitored by Public Health)</i>	90	108	112	120
<b>Hospitalizations</b>	8	8	8	8
<b>Deaths</b>	3	3	3	3
<b>Percent Deaths (deaths/confirmed cases)</b>	2.8%	2.6%	2.5%	2.5%
<b>Total Tests: Pacific County Residents (Pacific County Healthcare/Public Health)</b>	3054 (4880)	3250 (5170)	3371 (5565)	3503 (6060)
<b>Percent Positive (confirmed cases/total tests)</b>	3.5%	3.5%	3.6%	1.5%
<b>Percent Positive (7 Day Average):</b>	5.6%	4.1%	4.1%	4.1%
<b>Cases per 100k per 14 days (rolling)</b>	87.8	87.8	41.6	23.1

Updates highlighted

State Generated Dashboard (<https://www.pacificcountycovid19.com/>). Time lag/Correction.

# PACIFIC COUNTY

Total Number of Residents  
Confirmed with Covid-19  
by Zip Code



## Zip Code Data

- Confirmed case count is specific to each zip code.
- Represents permanent residence of Pacific County COVID-19 cases.
- Not a representation of where COVID-19 exposure or transmission occurred.

# COVID-19 ACTIVITY LEVEL

<25 cases per 100k  
people in 14 days

- Modified in-person learning
- Some sports or extra-curricular activities



*Based on Washington State Department of Health  
guidelines released August 4, 2020.*



# Pacific County Metrics: School Risk Assessment

**Reference:** *Decision Tree for Provision of In Person Learning among K-12 Students at Public and Private Schools during the COVID-19 Pandemic:*  
[https://www.doh.wa.gov/Portals/1/Documents/1600/coronavirus/DecisionTree-K12schools.pdf?utm\\_medium=email&utm\\_source=govdelivery](https://www.doh.wa.gov/Portals/1/Documents/1600/coronavirus/DecisionTree-K12schools.pdf?utm_medium=email&utm_source=govdelivery)

