



Public Health & Human Services

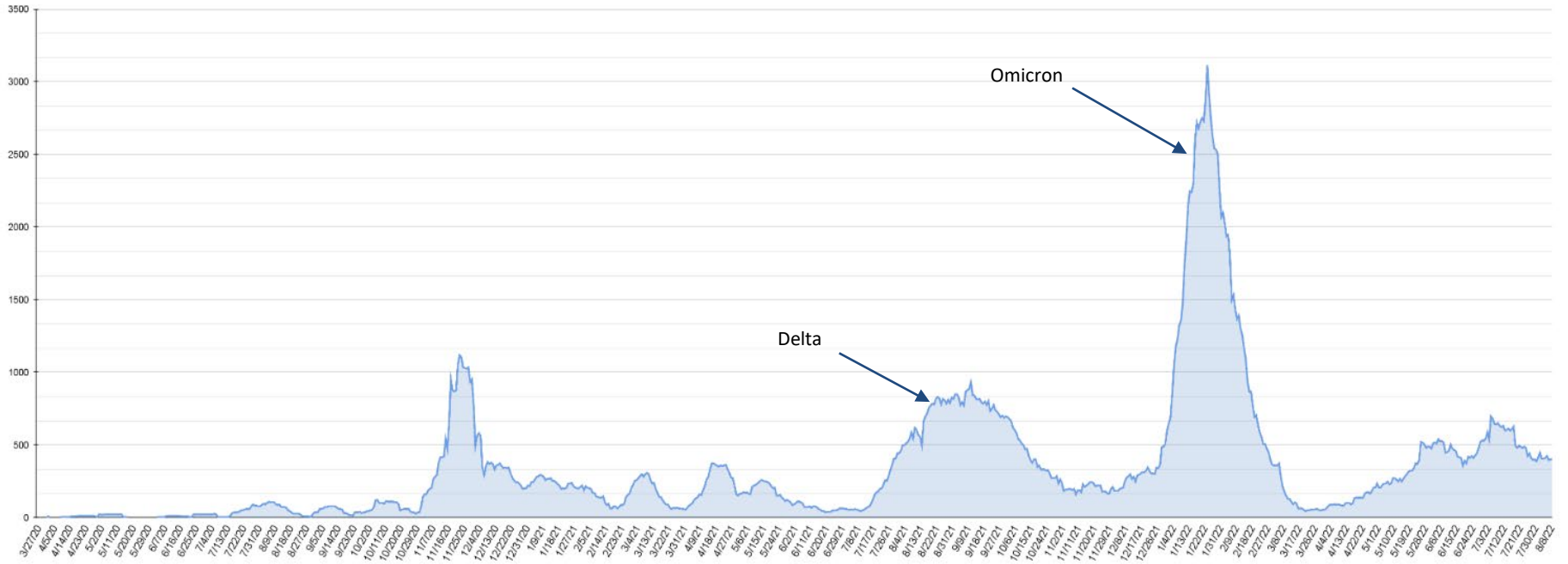
Pacific County COVID-19 Update

August 10, 2022

Pacific County Weekly COVID 19 Case Data

Pacific County Case Data Summary	7/27/2022	8/3/2022	8/10/2022
Cases (Total)	4482	4529	4570
New cases this week	41	47	41
New cases over 14 days	92	88	88
Total Hospitalizations	188	189	189
New hospitalizations this week	1	1	0
Deaths (total)	61	62	62
Case rate per 100,000 population over 14 days	421	407	402

Pacific County COVID-19 Case Rate per 100,000 population over past 14 days (trend over time)



COVID-19 Cases, Hospitalizations, and Deaths by Vaccination Status

Washington State Department of Health

August 10, 2022

Unvaccinated **12-34 year-olds** in Washington are

- 1.7 times more likely to get COVID-19 compared with fully vaccinated 12-34 year-olds.
- 4.1 times more likely to be hospitalized with COVID-19 compared with fully vaccinated 12-34 year olds.

Unvaccinated **35-64 year-olds** are

- 1.6 times more likely to get COVID-19 compared with fully vaccinated 35-64 year-olds.
- 3.5 times more likely to be hospitalized with COVID-19 compared with fully vaccinated 35-64 year olds.

Unvaccinated **65+ year-olds** are

- 2.1 times more likely to get COVID-19 compared with fully vaccinated 65+ year-olds.
- 3.2 times more likely to be hospitalized with COVID-19 compared with fully vaccinated 65+ year-olds.
- 3.1 times more likely to die of COVID-19 compared with fully vaccinated 65+ year-olds.

<https://doh.wa.gov/sites/default/files/2022-02/421-010-CasesInNotFullyVaccinated.pdf?uid=62f3fec89798c>

Pacific County Vaccine Rates: Initiation & Fully Vaccinated	8/3/2022	8/10/2022
Percent of total population initiating vaccine	69.3%	69.3%
Percent of total population fully vaccinated	62.0%	62.1%
Percent of population 16+ initiating vaccine	77.9%	78.0%
Percent of population 16+ fully vaccinated	70.1%	70.3%
Percent of the population 6 months + initiating vaccine	69.4%	69.6%
Percent of the population 6 months + who are fully vaccinated	62.2%	62.4%
Percent of the eligible population who has received a booster	54.9%	55.1%
Total doses given (initial series and boosters)	38,368	38,435

Pacific County Cases by Zip Code

- Confirmed case count is specific to each zip code.
- Represents permanent residence of Pacific County COVID-19 cases.
- Not a representation of where COVID-19 exposure or transmission occurred.

Case Rate by Zip Code	8/3/2022	8/10/2022
Bay Center (98527)	41	41
Chinook (98614)	75	75
Ilwaco (98624)	220	221
Long Beach (98631)	554	561
Lebam (98554)	17	17
Naselle (98638)	280	281
Nahcotta (98637)	10	10
Menlo (98561)	12	12
Ocean Park (98640)	637	648
Oysterville (98641)	14	14
Seaview (98644)	120	120
Raymond (98577)	1710	1726
South Bend (98586)	569	572
Tokeland (98590)	62	64
Grayland (98547)	72	72
Incomplete data	136	136

Pacific County COVID-19 Cases by Age Group

Age	7/20/2022	7/27/2022	8/3/2022	8/10/2022
0-9	380	382	385	392
10-19	683	686	689	690
20-29	484	484	487	490
30-39	624	629	636	640
40-49	566	569	575	576
50-59	547	551	555	557
60-69	542	555	566	576
70+	579	590	600	613
Incomplete data	36	36	36	36

SARS-CoV-2 Variant Proportions in WA

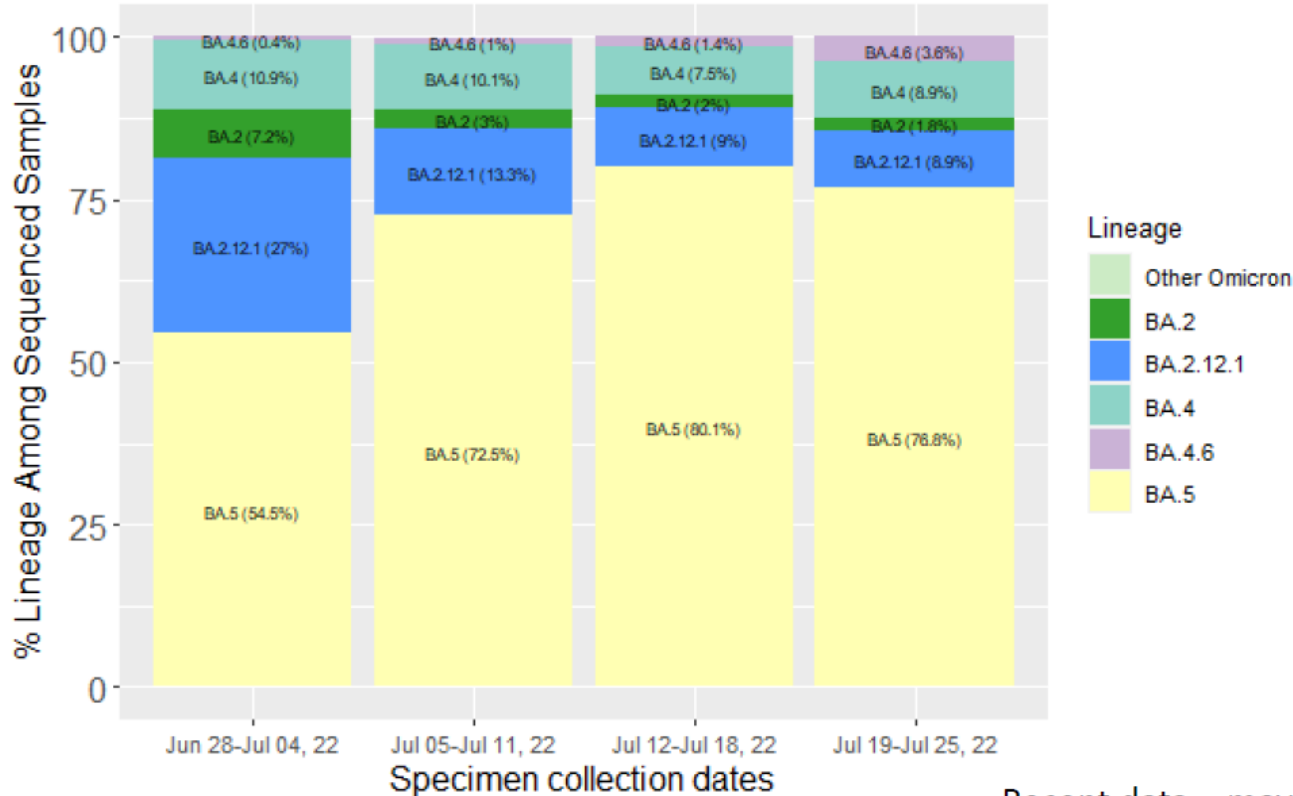
COVID-19 Omicron Variant Update

There has been a slight increase in the proportion of Omicron BA.4, but Omicron BA.5 proportions have remained more stable recently.

Initial findings for BA.4 and BA.5 suggest an increased ability to evade immune response from both vaccinations and prior infections.

We recommend those who do get sick to assume that they no longer have the increased immunity for 90 days and to continue exercising caution following quarantine/isolation.

Updated 8/10/2022



Recent data – may be reporting delay

Download printable copies at: <http://www.pacificcountycovid19.com/if-you-have-covid-19.html>



What to do if you are exposed to COVID:

IF YOU were exposed to COVID-19 and are NOT up-to-date on COVID-19 vaccinations (including boosters if eligible)

Quarantine for at least 5 days

- Stay home for at least 5 full days.

Get tested

- Get tested at least 5 days after close contact with someone with COVID-19.
- If you can't get a test and have symptoms, assume you are positive and isolate

Take precautions until Day 10

- Wear a quality mask for 10 days while around others

Avoid travel

Avoid being around people who are high risk

IF YOU were exposed to COVID and you are up-to-date on COVID vaccinations

No Quarantine

- You do not need to stay home **unless** you develop symptoms

Take precautions until Day 10

- Wear a quality mask for 10 days when around others.
- Get tested if you develop symptoms, or assume you are positive and isolate for 5 days

Avoid travel

Avoid being around people who are high risk

IF YOU were exposed and had confirmed COVID within the past 90 days

No Quarantine

- You do not need to quarantine **unless** you develop symptoms.

Take precautions until Day 10

- Take precautions until Day 10
- Wear a mask for 10 days when around others.
- If you develop symptoms, assume you are positive and isolate for 5 days

Avoid travel

Avoid being around people who are high risk



What to do if you test positive:

For non-tested: if you are symptomatic or have been exposed to COVID and unable to get a test, please assume you are positive and follow the advice below. .

Isolate at home, away from others.

- Isolate at least 5 days OR 24 hours after symptoms improve and no fever without fever reducing medicine **WHICHEVER IS LONGER**
- Day 1 of your isolation period begins the first full day after symptoms start
- Continue to wear a quality mask while around others until day 10

Reach out to your close contacts and let them know they've been exposed and they should quarantine.

- Quarantine for a minimum of 5 days from the last date of exposure.
- If no symptoms by day 5, quarantine can end but continue to wear a face covering and monitor for symptoms until day 10.
- If symptoms develop, get tested. If unable to test, assume you are positive & isolate.
- Close contacts include anyone you were around who is not fully vaccinated for more than 15 minutes while you were infectious (2 days prior to when symptoms started)

Wear a mask while inside and ask others in your home to do the same (preferably a KN95, KF-94, or a 3-ply surgical mask, if possible)

Ventilate your space as much as you can.

- If your home has an HVAC system, make sure it has a fresh filter. Consider using a HEPA air purifier if you don't have HVAC.
- Open the windows and doors whenever possible and safe to do so.
- Use fans to move virus particles from inside your home to outside.

Stay hydrated, use OTC medications such as acetaminophen to manage symptoms. Seek medical care if you display the following symptoms:

- Trouble breathing.
- Persistent pain or pressure in the chest.
- Confusion, inability to wake or stay awake.
- Pale, gray, or blue-colored skin, lips, or nail beds (or an abnormally low reading on a pulse oximeter, if you have one.)

*This list is not all possible symptoms. Call your medical provider if you have any other severe or concerning symptoms.

More information at: www.pacificcountycovid19.com

Free At-Home COVID-19 Tests & N95 Masks

Pick yours up today!

- Naselle Library
- South Bend Library
- Raymond Library
- Ocean Park Library
- Ilwaco Library
- Pacific County Health Dept (Long Beach or South Bend Office)
- Olympic Area Agency on Aging
- City of Long Beach
- Shoalwater Clinic



COVID-19 Treatment Options

If you are high risk of severe illness due to COVID-19 (as defined below), call your provider to see if you are eligible!

Key points to know:

- Monoclonal antibody treatments (mAB) and oral antiviral medications are available in Pacific County
- Medical provider order is required
- Treatments are most effective if administered within the first few days of disease (the earlier the better)
- Those who are high risk due to age or certain underlying health conditions are eligible. Talk to your provider to see if they are right for you!

More information: <https://www.cdc.gov/coronavirus/2019-ncov/your-health/treatments-for-severe-illness.html>