

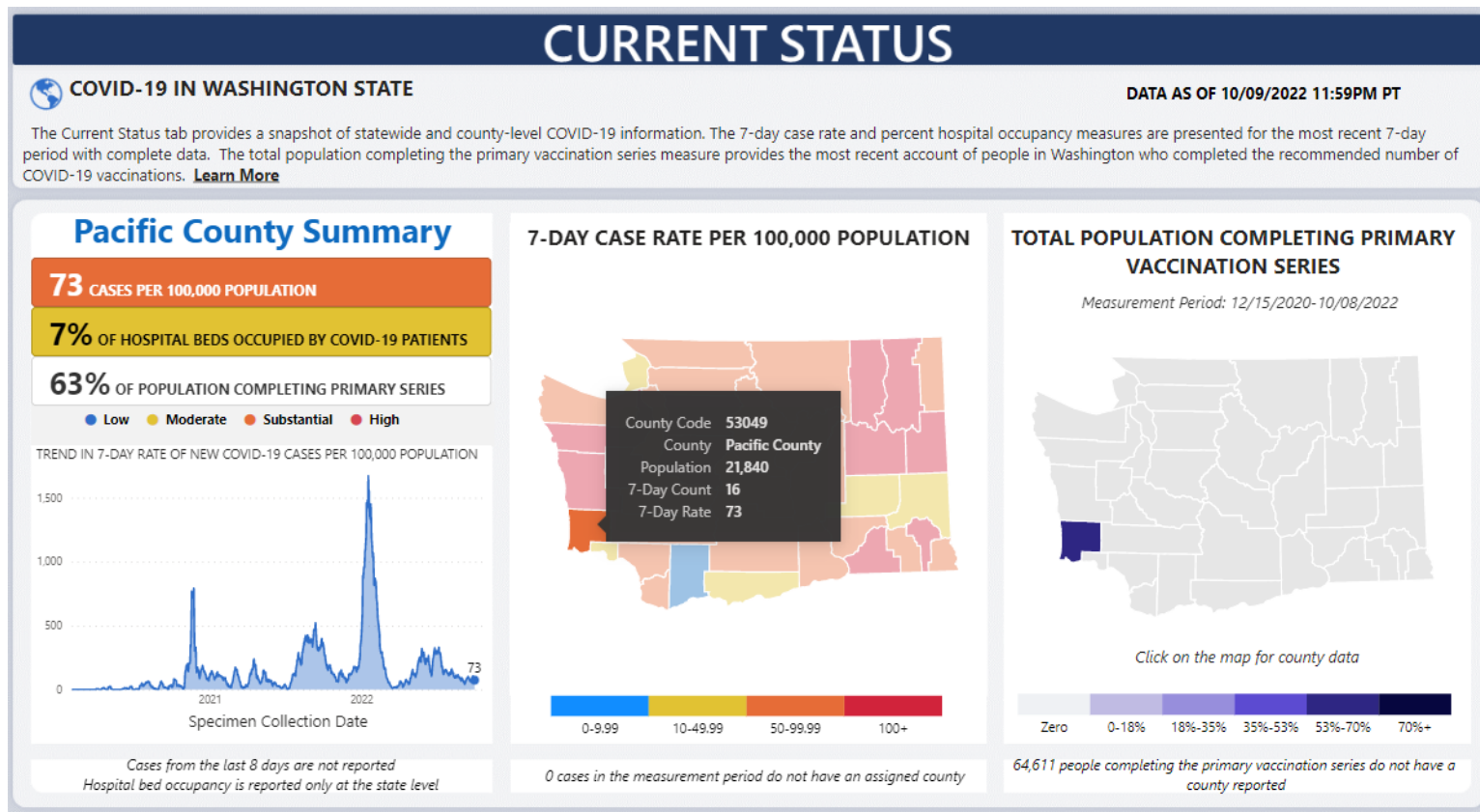


Public Health & Human Services

# Pacific County COVID-19 Update

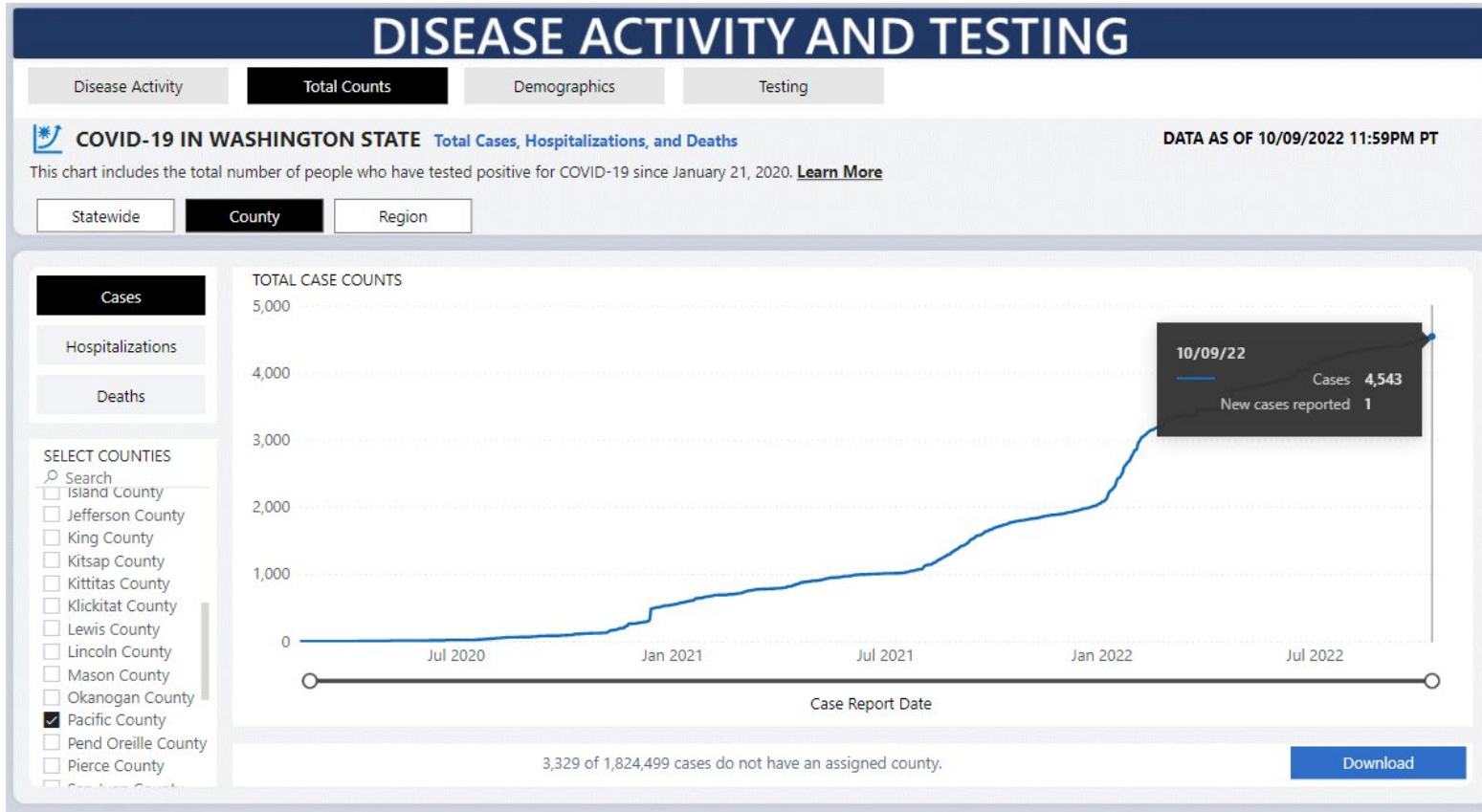
## October 12, 2022

# Current COVID-19 Status



Access at <https://doh.wa.gov/emergencies/covid-19/data-dashboard> then click/select our county for a summary of the current status. The current 7-day rate is **73 per 100,000**, which is considered **“Moderate.”**

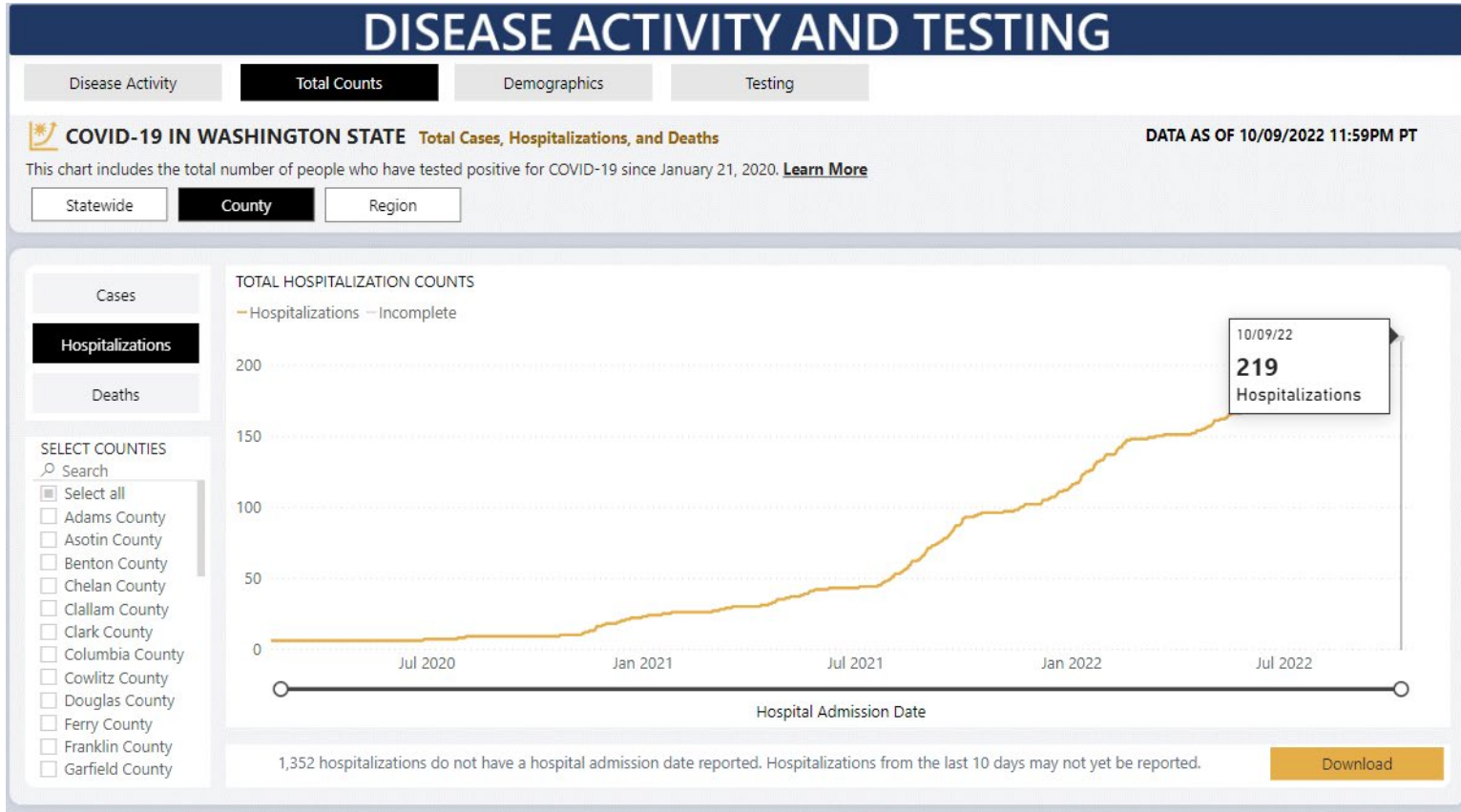
# Disease Activity: Case Count



DOH has recorded **4,543\*** cases of COVID-19 as of 10/12/22.

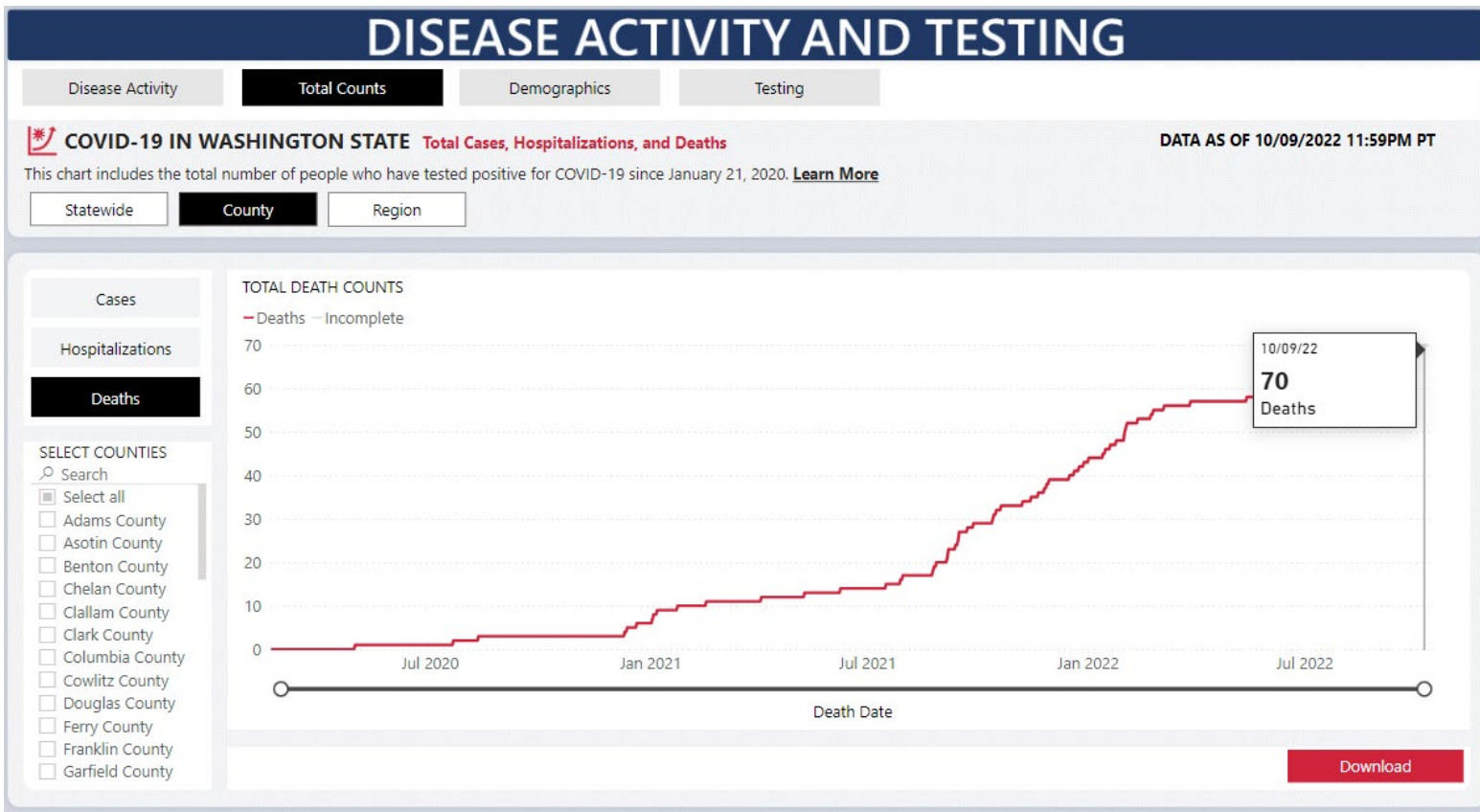
\*This is an undercount from our county. We expect that any missing cases will be accounted for by November.

# Disease Activity: Hospitalization Count



DOH has recorded **219** hospitalizations linked to COVID-19 as of 10/12/22.

# Disease Activity: Hospitalization Count



At this time, DOH has recorded **70** deaths linked to COVID-19 as of 10/12/22.

# Disease Activity: Case Rate per 100K

## DISEASE ACTIVITY AND TESTING

Disease Activity

Total Counts

Demographics

Testing

Rate ☒ Count



### COVID-19 IN WASHINGTON STATE

Cases and Deaths by Specimen Collection Date, and Hospitalizations by Admission Date

DATA AS OF 10/09/2022 11:59PM PT

This chart shows the rate of the COVID-19 outbreak in Washington by cases, hospitalizations and deaths over time. [Learn More](#)

Statewide

County

Region

Cases

Hospitalizations

Deaths

R-effective Estimates

#### SELECT COUNTIES

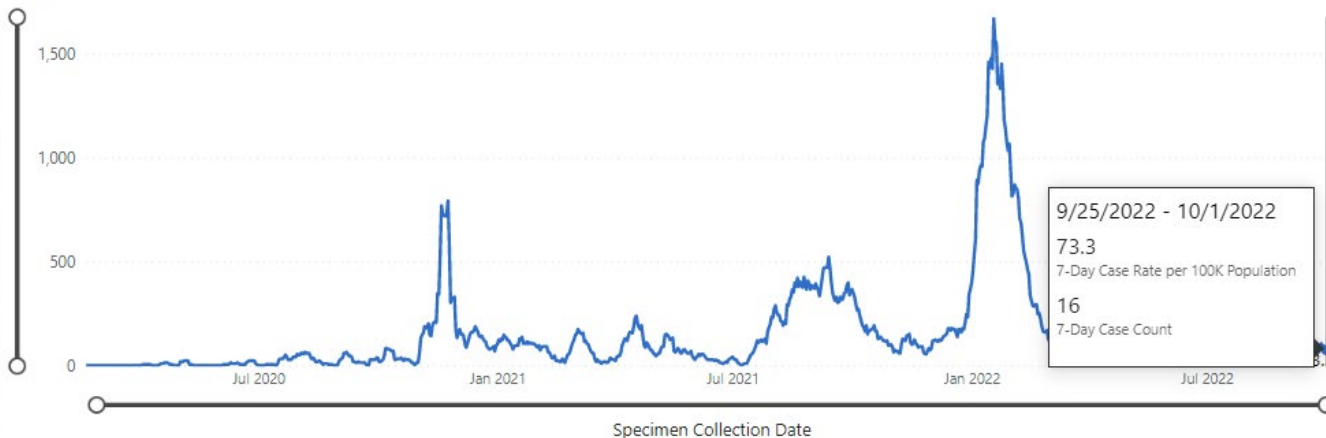
Search

- ☐ Kitsap County
- ☐ Kittitas County
- ☐ Klickitat County
- ☐ Lewis County
- ☐ Lincoln County
- ☐ Mason County
- ☐ Okanogan County
- ☒ Pacific County
- ☐ Pend Oreille County
- ☐ Pierce County

#### TREND IN 7-DAY RATE OF NEW COVID-19 CASES PER 100,000 POPULATION

7-Day Case Rate

7-Day ☒ 14-Day



3,329 of 1,824,499 cases do not have an assigned county. Cases from the last 8 days may yet not be reported.

Download

The current 7-day case rate is 73.3 per 100,000. This is approximately the same as last week's (10/5) rate of 73.3.



# COVID-19 Cases, Hospitalizations, and Deaths by Vaccination Status

## Washington State Department of Health

October 12, 2022

Unvaccinated 12-34 year-olds in Washington are

- 1.9 times more likely to get COVID-19 compared with fully vaccinated 12-34 year-olds.
- 3.1 times more likely to be hospitalized with COVID-19 compared with fully vaccinated 12-34 year olds.

Unvaccinated 35-64 year-olds are

- 1.6 times more likely to get COVID-19 compared with fully vaccinated 35-64 year-olds.
- 2.8 times more likely to be hospitalized with COVID-19 compared with fully vaccinated 35-64 year olds.

Unvaccinated 65+ year-olds are

- 1.8 times more likely to get COVID-19 compared with fully vaccinated 65+ year-olds.
- 2.9 times more likely to be hospitalized with COVID-19 compared with fully vaccinated 65+ year-olds.
- 4.5 times more likely to die of COVID-19 compared with fully vaccinated 65+ year-olds.

<https://doh.wa.gov/sites/default/files/2022-02/421-010-CasesInNotFullyVaccinated.pdf?uid=6346f5443f934>

# COVID-19 Cases, Hospitalizations, and Deaths by Vaccination Status

## Washington State Department of Health

(Updated Monthly)

### Reports

✓ Modeling Situation Reports

✓ Roadmap to Recovery Reports

✓ Behavioral Health Reports

✓ Report Archive

Click here!

- [COVID-19 Cases Among Children and Youth in Washington \(PDF\)](#) - 9/21/2022 - updated weekly
- [Casos de COVID-19 en niños y jóvenes en Washington \(PDF\)](#) Español - 9/21/2022 - Actualizado semanalmente
- [COVID-19 Cases, Hospitalizations, and Deaths by Vaccination Status \(PDF\)](#) - 9/14/2022 - updated monthly
- [COVID-19 Death Categories \(PDF\)](#) - 8/26/2021
- [COVID-19 Morbidity and Mortality by Race, Ethnicity and Language in Washington State \(PDF\)](#) - 9/20/2022 - updated every two weeks
- [Long-term Care Report \(PDF\)](#) - 9/12/2022 - updated monthly
- [Multisystem Inflammatory Syndrome in Children Associated with COVID-19 in Washington State \(PDF\)](#) - 9/14/2022 - updated monthly
- [Outbreaks in Washington State K-12 Schools \(PDF\)](#) - 8/31/2022 - updated monthly
- [Reported COVID-19 Reinfections in Washington State \(PDF\)](#) - 9/21/2022 - updated weekly
- [SARS-CoV-2 Sequencing and Variants in Washington State \(PDF\)](#) - 9/21/2022 - updated weekly
- [SARS-CoV-2 Sequencing and Variants in Washington State Weekly Data \(Excel\)](#) - 9/21/2022 - updated weekly
- [SARS-CoV-2 Vaccine Breakthrough Surveillance and Case Information Resource \(PDF\)](#) - 9/14/2022 - updated monthly
- [Outbreaks in Washington State Agriculture and Food Manufacturing Settings \(PDF\)](#) - 6/16/2022



# Vaccination Status: Total Doses

## VACCINATIONS

Where and when are vaccinations being given?

How many people are getting vaccinated?

Who is getting vaccinated?



### COVID-19 IN WASHINGTON STATE [Where and when are vaccinations being given?](#)

DATA AS OF 10/8/2022 11:59:00 PM PT

This chart shows the number of COVID-19 vaccines given in Washington state facilities and reported to the state. Not all COVID-19 vaccines given in Washington are reported to the state. Vaccine doses given reflects the data reported to the state as of the latest update date. Please note, the measures "vaccines given" and "people vaccinated" are not comparable. People vaccinated counts the number of Washington residents initiating their primary series, completing their primary series, and receiving a booster. Numbers may not always align since people may live in a different county than where they got vaccinated. Vaccination data are updated on Mondays, Wednesdays, and Fridays only. [Learn More](#)

#### SELECT COUNTIES

Search

- ☐ King County
- ☐ Kitsap County
- ☐ Kittitas County
- ☐ Klickitat County
- ☐ Lewis County
- ☐ Lincoln County
- ☐ Mason County
- ☐ Okanogan County
- ☒ Pacific County
- ☐ Pend Oreille County
- ☐ Pierce County
- ☐ San Juan County
- ☐ Skagit County
- ☐ Skamania County
- ☐ Snohomish County
- ☐ Spokane County

By Location

By Date

Cumulative View

Vaccine Doses Given and Reported (statewide or selected counties) **39,114**

#### Statewide Measures Only

Vaccine Doses Given and Reported in Washington **15,100,006**

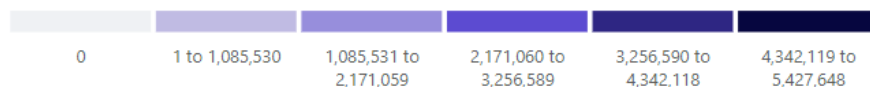
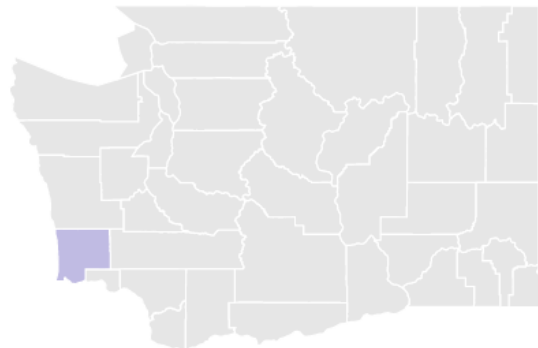
Doses Delivered to Washington Providers **9,210,160**

Doses Delivered for Federal Partnership Programs **7,629,390**

Percentage of Delivered Doses Given **89.7%**

Current Complete 7-Day Average **21,042**

#### VACCINE DOSES GIVEN AND REPORTED IN WASHINGTON COUNTIES



County data for doses given are based on the location of the facility giving the vaccine. 95,187 vaccine doses given do not have a county reported.

**39,114 vaccine doses have been administered in Pacific County. This is an increase from last week's count of 38,991**

# Vaccination Status: Vaccine Proportions

## VACCINATIONS

Where and when are vaccinations being given?

How many people are getting vaccinated?

Who is getting vaccinated?

Initiated

Completed

Received Booster



### COVID-19 IN WASHINGTON STATE

Completed Primary Series (Received Recommended Doses of Primary Series)

DATA AS OF 10/8/2022 11:59:00 PM PT

This chart shows the number of people in Washington that have completed their primary series. People who have completed their primary series represent the number of people who have received one dose of a single-shot vaccine, a second dose of a 2-dose vaccine, or a third dose of a 3-dose vaccine. Individuals who have completed their primary series are included in the count of both initiated and completed. Please note, the measures "vaccines given" and "people vaccinated" are not comparable. Vaccines given counts the number of doses given in a location. People vaccinated counts the number of Washington residents who have initiated their primary series, completed their primary series, and received a booster. Numbers may not always align since people may live in a different county than

#### SELECT COUNTIES

Search

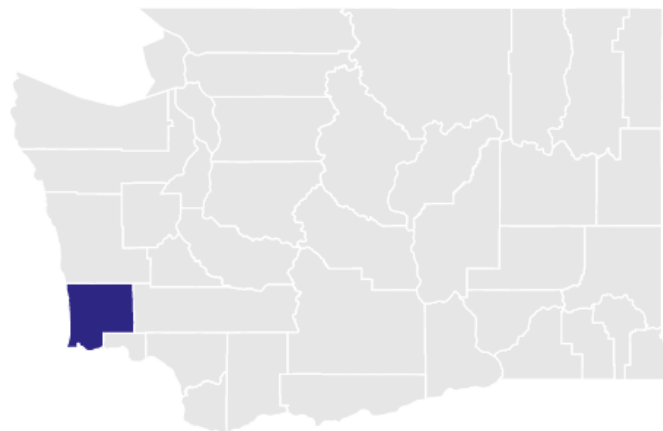
- ☐ Grant County
- ☐ Grays Harbor Coun...
- ☐ Island County
- ☐ Jefferson County
- ☐ King County
- ☐ Kitsap County
- ☐ Kittitas County
- ☐ Klickitat County
- ☐ Lewis County
- ☐ Lincoln County
- ☐ Mason County
- ☐ Okanogan County
- ☒ Pacific County
- ☐ Pend Oreille County
- ☐ Pierce County
- ☐ San Juan County

Map View

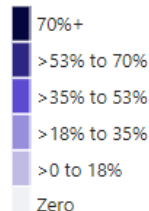
Tabular View

|  |       |
|--|-------|
| Percent of Total Population Initiating Primary Series  | 70.2% |
| Percent of Total Population Completing Primary Series  | 62.9% |
| Percent of Population Initiating Primary Series (16+)  | 79.0% |
| Percent of Population Completing Primary Series (16+)  | 71.2% |
| Percent of Population Initiating Primary Series (6mo+) | 70.5% |
| Percent of Population Completing Primary Series (6mo+) | 63.2% |
| Percent of Eligible People Receiving a Booster (5+)    | 56.0% |

#### TOTAL POPULATION THAT COMPLETED PRIMARY SERIES

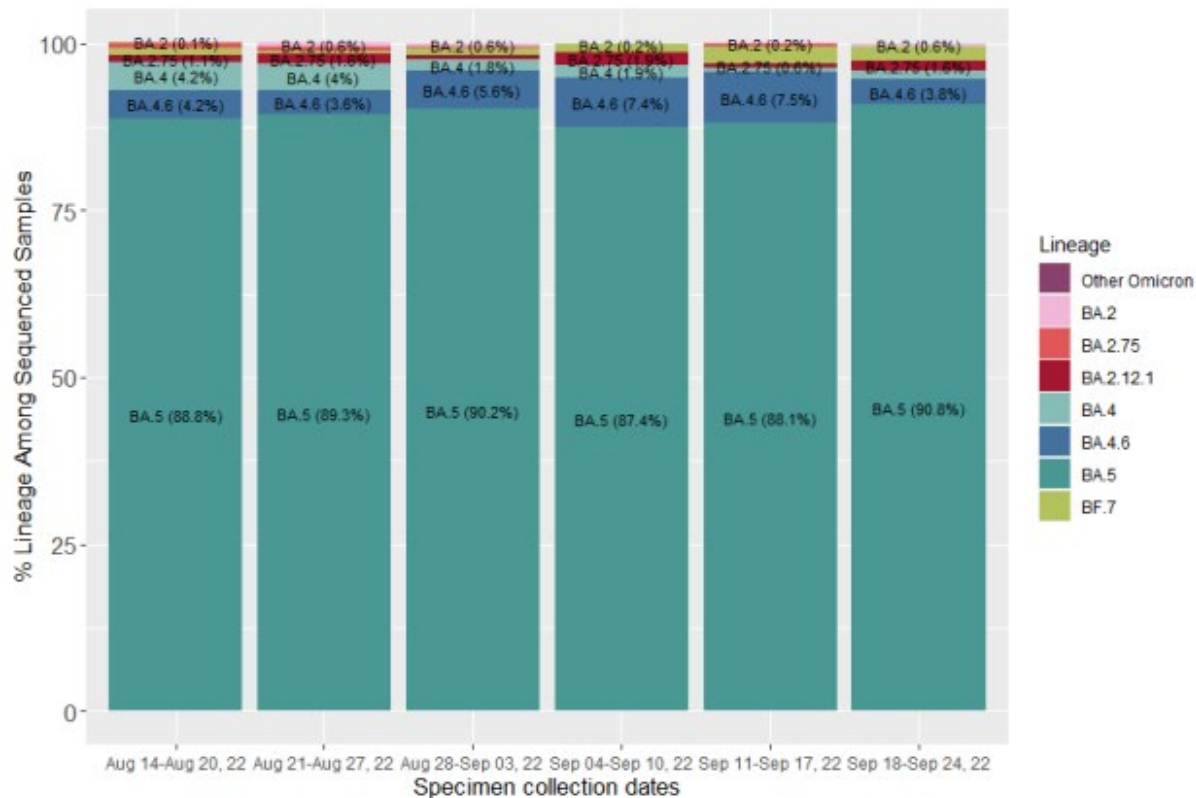


#### Legend



County data for people who completed their primary series are based on the vaccine recipient's county of residence. 64,611 people who completed their primary series do not have a county reported.

# SARS-CoV-2 Variant Proportions in WA



## COVID-19 Omicron Variant Update

BA.5 continues to be the dominant variant with BA.4 and BA.4.6 as the next two most prevalent.

Findings for BA.5, BA.4 and BA.4.6 have shown an increased ability to evade immune response from both initial vaccinations and prior infections.

However, the current bivalent vaccine booster is specifically designed for and very effective against these Omicron variants.

[Scheduling information here.](#)

# COVID-19 Omicron Variant Update

## Reports

✓ Modeling Situation Reports

✓ Roadmap to Recovery Reports

✓ Behavioral Health Reports

✓ Report Archive

- [COVID-19 Cases Among Children and Youth in Washington \(PDF\)](#) - 9/21/2022 - updated weekly
- [Casos de COVID-19 en niños y jóvenes en Washington \(PDF\)](#) Español - 9/21/2022 - Actualizado semanalmente
- [COVID-19 Cases, Hospitalizations, and Deaths by Vaccination Status \(PDF\)](#) - 9/14/2022 - updated monthly
- [COVID-19 Death Categories \(PDF\)](#) - 8/26/2021
- [COVID-19 Morbidity and Mortality by Race, Ethnicity and Language in Washington State \(PDF\)](#) - 9/20/2022 - updated every two weeks
- [Long-term Care Report \(PDF\)](#) - 9/12/2022 - updated monthly
- [Multisystem Inflammatory Syndrome in Children Associated with COVID-19 in Washington State \(PDF\)](#) - 9/14/2022 - updated monthly
- [Outbreaks in Washington State K-12 Schools \(PDF\)](#) - 8/31/2022 - updated monthly
- [Reported COVID-19 Reinfections in Washington State \(PDF\)](#) - 9/21/2022 - updated weekly
- [SARS-CoV-2 Sequencing and Variants in Washington State \(PDF\)](#) - 9/21/2022 - updated weekly
- [SARS-CoV-2 Sequencing and Variants in Washington State Weekly Data \(Excel\)](#) - 9/21/2022 - updated weekly
- [SARS-CoV-2 Vaccine Breakthrough Surveillance and Case Information Resource \(PDF\)](#) - 9/14/2022 - updated monthly
- [Outbreaks in Washington State Agriculture and Food Manufacturing Settings \(PDF\)](#) - 6/16/2022



Click here!

The chart in the previous slide is usually found on Page 7 of the report.

Download printable copies at: <http://www.pacificcountycovid19.com/if-you-have-covid-19.html>



## What to do if you are exposed to COVID-19:

If you were exposed and you are **NOT** up to date on COVID vaccinations (including boosters if eligible)

### Quarantine for at least 5 days

#### Get tested

- If you have symptoms, test right away
- If you do not have symptoms, test on day 2 and day 4 after exposure
- If you can't get a test, but develop symptoms, assume you are positive and isolate

#### Take precautions until day 10

- Wear a quality mask for 10 days while around others
- Avoid travel
- Avoid being around people who are high risk

If you were exposed and you **ARE** up to date on COVID vaccinations

### No quarantine

- You do not need to quarantine unless you develop symptoms

#### Take precautions until day 10

- Get tested if you develop symptoms
- Wear a quality mask for 10 days while around others
- Avoid travel
- Avoid being around people who are high risk

If you were exposed and you had confirmed COVID within the past 90 days

### No quarantine

- You do not need to quarantine unless you develop symptoms

#### Take precautions until day 10

- Get tested if you develop symptoms
- Wear a quality mask for 10 days while around others
- Avoid travel
- Avoid being around people who are high risk

#### More information:

[www.cdc.gov/coronavirus/2019-ncov/your-health/quarantine-isolation](http://www.cdc.gov/coronavirus/2019-ncov/your-health/quarantine-isolation)  
[www.pacificcountycovid19.com](http://www.pacificcountycovid19.com)



## What to do if you test positive for COVID-19:

### Isolate at home and stay away from others.

- Isolate at least 5 days, or 24 hours after symptoms improve and no fever without medication, **WHICHEVER IS LONGER**.
- Day 1 of your isolation period begins the first full day after symptoms start.
- Wear a quality face covering at all times when around others through day 10. It is very important to wear a mask at all times for the entire 10 days- even after you are out of isolation- as you may still be contagious on days 5-10
- Improve ventilation by opening windows and/or using air purifiers with HEPA filters.

### Reach out to your close contacts and let them know they've been exposed and that they should quarantine.

- Close contacts include anyone you were around for more than 15 minutes who is not fully vaccinated (including boosters) from 2 days prior to when you first developed symptoms through today.
- Quarantine is a minimum of 5 days from last date of exposure.
- If no symptoms develop by day 5, quarantine can end, but continue to wear a face covering and monitor for symptoms until day 10.
- If symptoms develop, get tested. If unable to test, assume you are positive and isolate.

### Stay hydrated, use OTC medications to manage symptoms. Seek medical care if you experience any of the following symptoms:

- Trouble breathing.
- Persistent pain or pressure in the chest
- Confusion, inability to wake or stay awake
- Pale gray, or blue-colored skin, lips, or nail beds or an abnormally low reading on a pulse oximeter

\*Note- this is not an all inclusive list of symptoms. Please call your provider or 911 if you experience any other severe symptoms or experience a medical emergency..

**If you are high risk due to age (over 65), or underlying health condition, contact your provider for treatment options including oral antiviral medication that can help reduce the severity of COVID-19.**

#### Find more information at:

[www.cdc.gov/coronavirus/2019-ncov/your-health/quarantine-isolation](http://www.cdc.gov/coronavirus/2019-ncov/your-health/quarantine-isolation)  
[www.pacificcountycovid19.com](http://www.pacificcountycovid19.com)

# Free At-Home COVID-19 Tests

*Pick yours up today!*

- Naselle Library
- South Bend Library
- Raymond Library
- Ocean Park Library
- Ilwaco Library
- Pacific County Health Dept (Long Beach or South Bend Office)
- Olympic Area Agency on Aging
- City of Long Beach
- Shoalwater Clinic





# COVID-19 Treatment Options

*If you are high risk of severe illness due to COVID-19 (as defined below), call your provider to see if you are eligible!*

Key points to know:

- Monoclonal antibody treatments (mAB) and oral antiviral medications are available in Pacific County
- Medical provider order is required
- Treatments are most effective if administered within the first few days of disease (the earlier the better)
- Those who are high risk due to age or certain underlying health conditions are eligible. Talk to your provider to see if they are right for you!

More information: <https://www.cdc.gov/coronavirus/2019-ncov/your-health/treatments-for-severe-illness.html>

\*Don't have a provider? You can call 1-800-525-0127, then press # to schedule your video consultation via the DOH hotline for FREE. Visit here for more telehealth information:  
<https://doh.wa.gov/emergencies/covid-19/treatments/free-telehealth>\*