

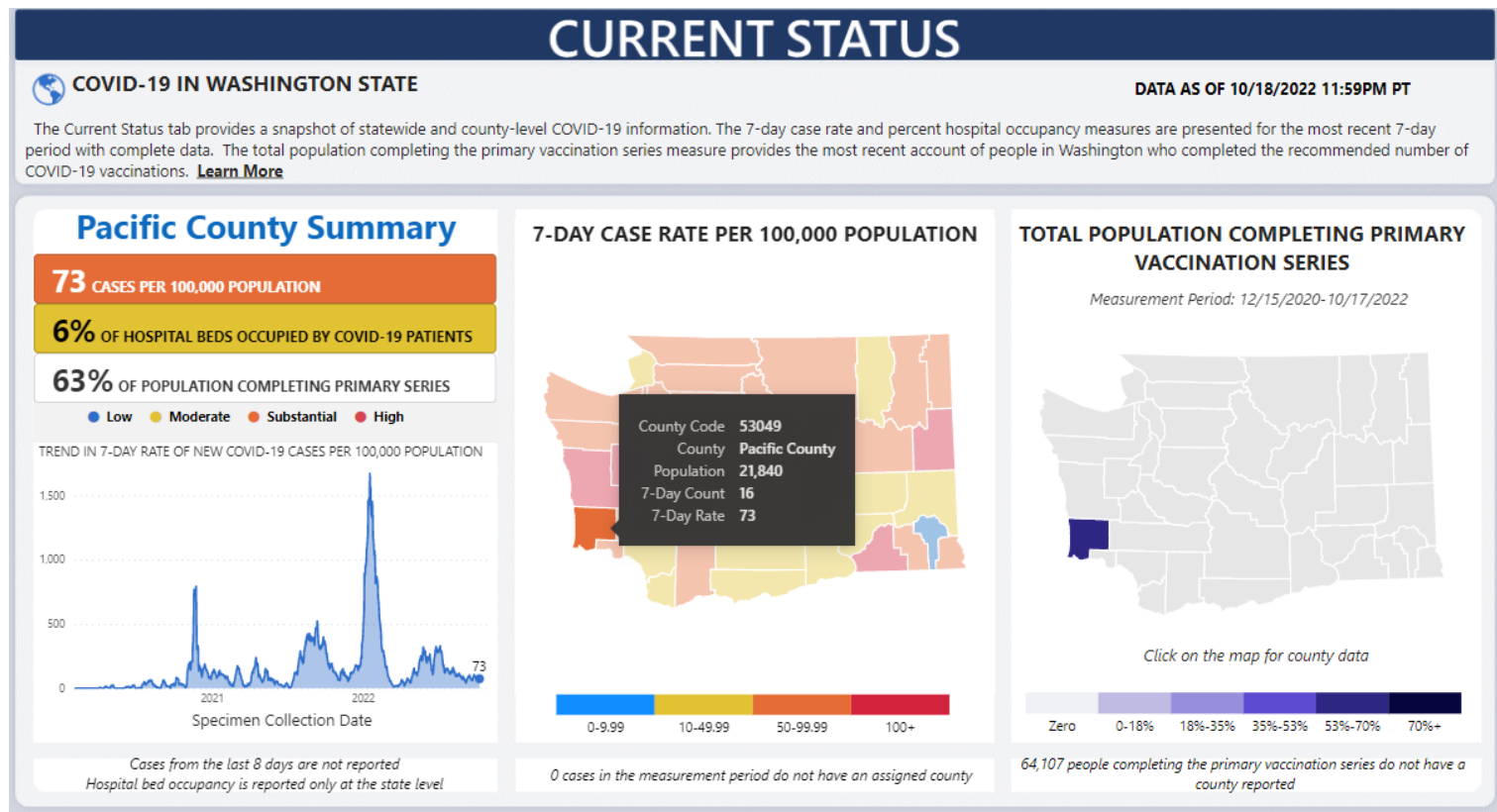


Public Health & Human Services

Pacific County COVID-19 Update

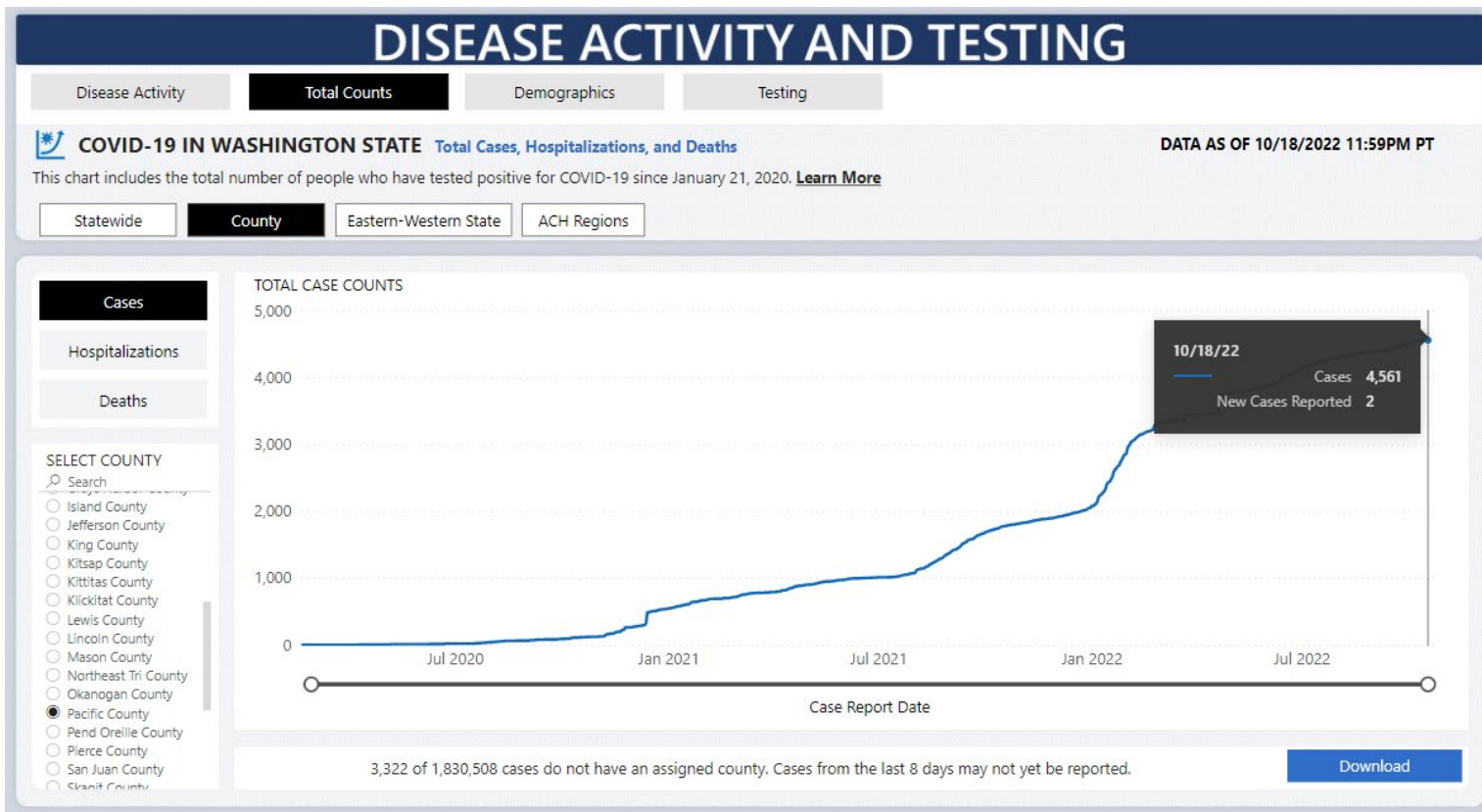
October 19, 2022

Current COVID-19 Status



Access at <https://doh.wa.gov/emergencies/covid-19/data-dashboard> then click/select our county for a summary of the current status. The current 7-day rate is **73 per 100,000**, which is considered **“Substantial.”**

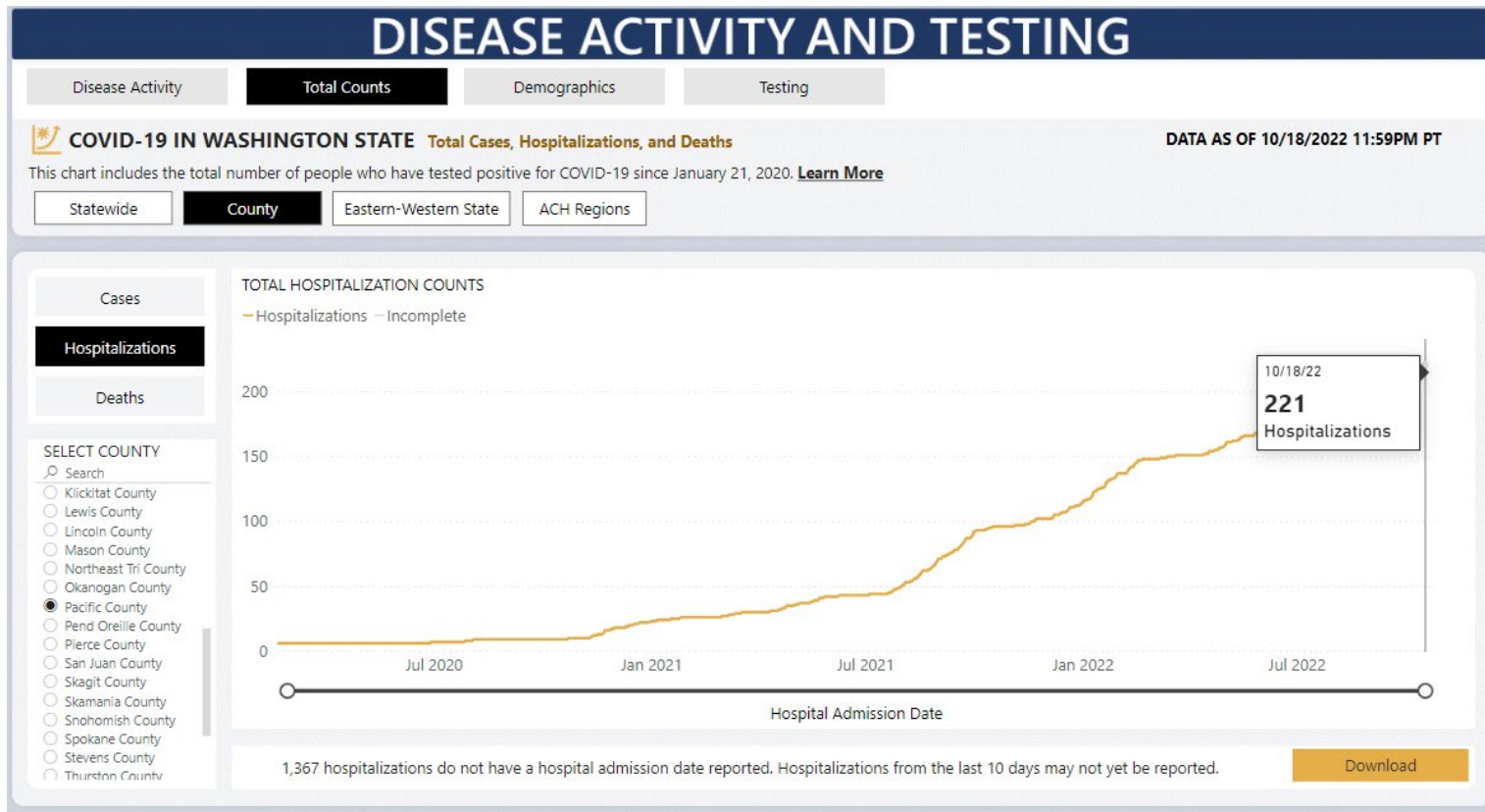
Disease Activity: Case Count



DOH has recorded **4,561*** cases of COVID-19 as of 10/19/22.

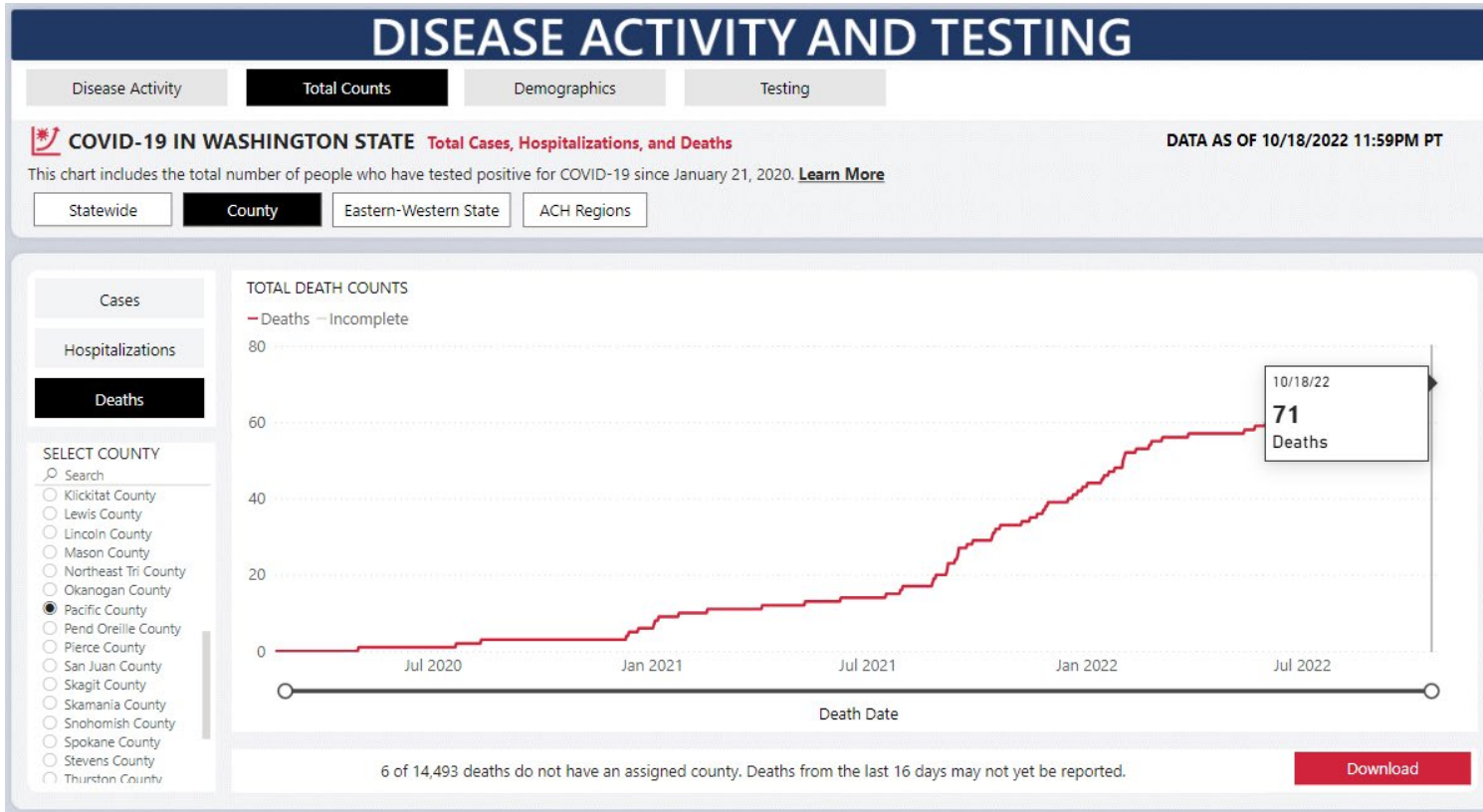
*This is an undercount from our county. We expect that any missing cases will be accounted for by November.

Disease Activity: Hospitalization Count



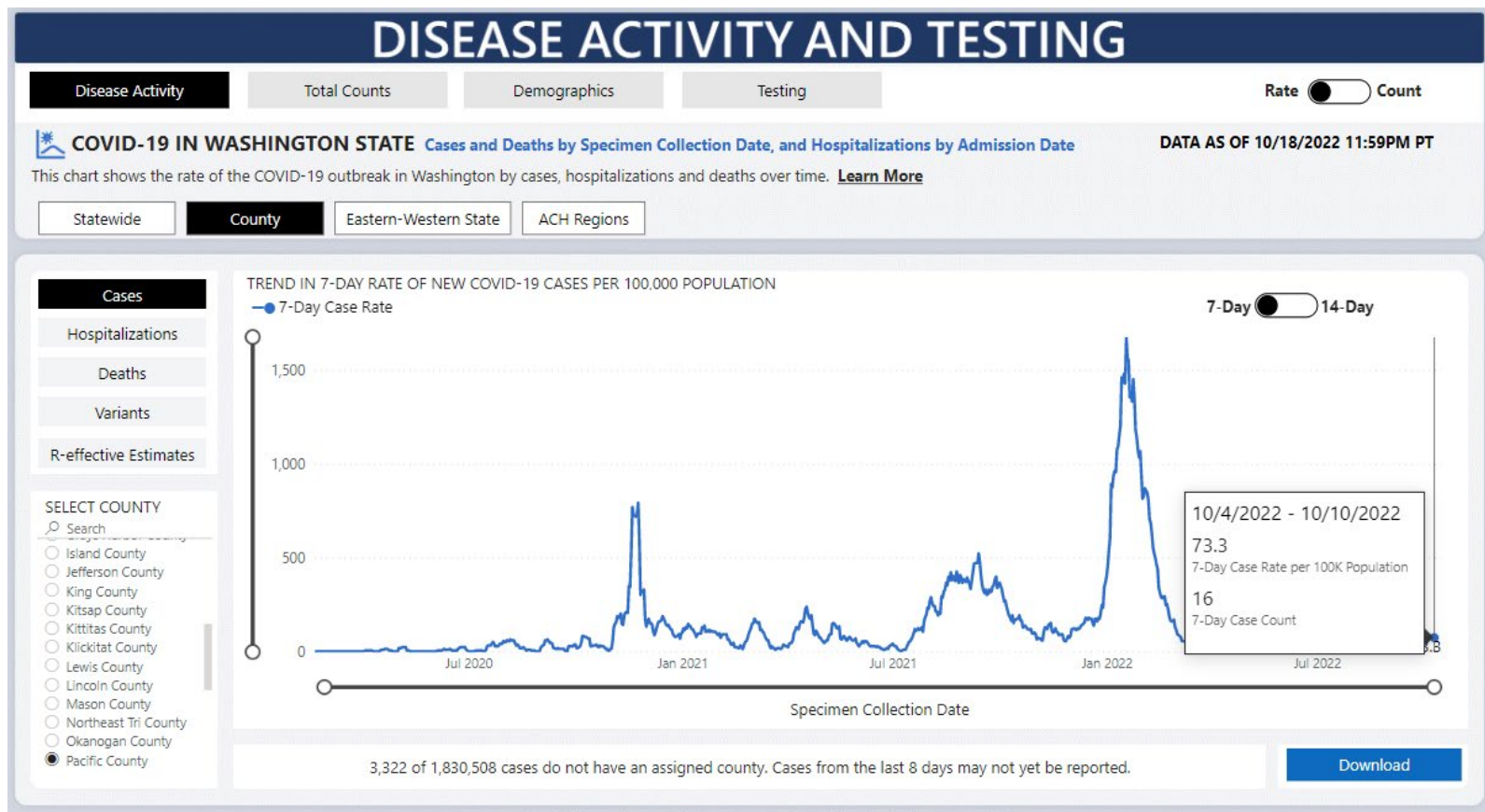
DOH has recorded **221** hospitalizations linked to COVID-19 as of 10/19/22.

Disease Activity: Hospitalization Count



At this time,
DOH has
recorded **71**
deaths linked to
COVID-19 as of
10/19/22.

Disease Activity: Case Rate per 100K



The current 7-day case rate is 73.3 per 100,000. This is approximately the same as last week's (10/12) rate of 73.3.

COVID-19 Cases, Hospitalizations, and Deaths by Vaccination Status

Washington State Department of Health

October 12, 2022

Unvaccinated 12-34 year-olds in Washington are

- 1.9 times more likely to get COVID-19 compared with fully vaccinated 12-34 year-olds.
- 3.1 times more likely to be hospitalized with COVID-19 compared with fully vaccinated 12-34 year olds.

Unvaccinated 35-64 year-olds are

- 1.6 times more likely to get COVID-19 compared with fully vaccinated 35-64 year-olds.
- 2.8 times more likely to be hospitalized with COVID-19 compared with fully vaccinated 35-64 year olds.

Unvaccinated 65+ year-olds are

- 1.8 times more likely to get COVID-19 compared with fully vaccinated 65+ year-olds.
- 2.9 times more likely to be hospitalized with COVID-19 compared with fully vaccinated 65+ year-olds.
- 4.5 times more likely to die of COVID-19 compared with fully vaccinated 65+ year-olds.

<https://doh.wa.gov/sites/default/files/2022-02/421-010-CasesInNotFullyVaccinated.pdf?uid=6346f5443f934>

COVID-19 Cases, Hospitalizations, and Deaths by Vaccination Status

Washington State Department of Health

(Updated Monthly)

Reports

✓ Modeling Situation Reports

✓ Roadmap to Recovery Reports

✓ Behavioral Health Reports

✓ Report Archive

Click here!

- [COVID-19 Cases Among Children and Youth in Washington \(PDF\)](#) - 9/21/2022 - updated weekly
- [Casos de COVID-19 en niños y jóvenes en Washington \(PDF\)](#) Español - 9/21/2022 - Actualizado semanalmente
- [COVID-19 Cases, Hospitalizations, and Deaths by Vaccination Status \(PDF\)](#) - 9/14/2022 - updated monthly
- [COVID-19 Death Categories \(PDF\)](#) - 8/26/2021
- [COVID-19 Morbidity and Mortality by Race, Ethnicity and Language in Washington State \(PDF\)](#) - 9/20/2022 - updated every two weeks
- [Long-term Care Report \(PDF\)](#) - 9/12/2022 - updated monthly
- [Multisystem Inflammatory Syndrome in Children Associated with COVID-19 in Washington State \(PDF\)](#) - 9/14/2022 - updated monthly
- [Outbreaks in Washington State K-12 Schools \(PDF\)](#) - 8/31/2022 - updated monthly
- [Reported COVID-19 Reinfections in Washington State \(PDF\)](#) - 9/21/2022 - updated weekly
- [SARS-CoV-2 Sequencing and Variants in Washington State \(PDF\)](#) - 9/21/2022 - updated weekly
- [SARS-CoV-2 Sequencing and Variants in Washington State Weekly Data \(Excel\)](#) - 9/21/2022 - updated weekly
- [SARS-CoV-2 Vaccine Breakthrough Surveillance and Case Information Resource \(PDF\)](#) - 9/14/2022 - updated monthly
- [Outbreaks in Washington State Agriculture and Food Manufacturing Settings \(PDF\)](#) - 6/16/2022

Vaccination Status: Total Doses

VACCINATIONS

Where and when are vaccinations being given?

How many people are getting vaccinated?

Who is getting vaccinated?



COVID-19 IN WASHINGTON STATE [Where and when are vaccinations being given?](#)

DATA AS OF 10/17/2022 11:59:00 PM PT

This chart shows the number of COVID-19 vaccines given in Washington state facilities and reported to the state. Not all COVID-19 vaccines given in Washington are reported to the state. Vaccine doses given reflects the data reported to the state as of the latest update date. Please note, the measures "vaccines given" and "people vaccinated" are not comparable. People vaccinated counts the number of Washington residents initiating their primary series, completing their primary series, receiving any booster, and receiving a bivalent booster. Numbers may not always align since people may live in a different county than where they got vaccinated. Vaccination data are updated on Mondays, Wednesdays, and Fridays only. [Learn More](#)

SELECT COUNTIES

Search

- ☐ Jefferson County
- ☐ King County
- ☐ Kitsap County
- ☐ Kittitas County
- ☐ Klickitat County
- ☐ Lewis County
- ☐ Lincoln County
- ☐ Mason County
- ☐ Okanogan County
- ☒ Pacific County
- ☐ Pend Oreille County
- ☐ Pierce County
- ☐ San Juan County
- ☐ Skagit County
- ☐ Skamania County
- ☐ Snohomish County

By Location

By Date

Cumulative View

Vaccine Doses Given and Reported (statewide or selected counties) **39,519**

Statewide Measures Only

Vaccine Doses Given and Reported in Washington **39,519**

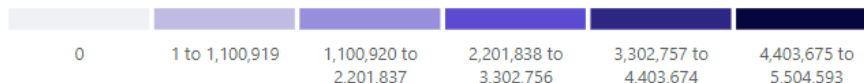
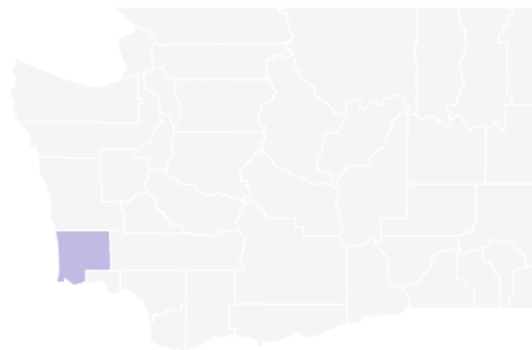
Doses Delivered to Washington Providers **9,216,460**

Doses Delivered for Federal Partnership Programs **7,640,190**

Percentage of Delivered Doses Given **0.2%**

Current Complete 7-Day Average **39**

VACCINE DOSES GIVEN AND REPORTED IN WASHINGTON COUNTIES



County data for doses given are based on the location of the facility giving the vaccine. vaccine doses given do not have a county reported.

39,519 vaccine doses have been administered in Pacific County. This is a 405 dose increase from last week's count: **39,114**

Vaccination Status: Vaccine Proportions

VACCINATIONS

Where and when are vaccinations being given?

How many people are getting vaccinated?

Who is getting vaccinated?

Initiated

Completed

Any Booster

Bivalent Booster



COVID-19 IN WASHINGTON STATE

Initiated Primary Series (Received At Least 1 Dose of Primary Series)

DATA AS OF 10/17/2022 11:59:00 PM PT

This chart shows the number of people in Washington who have initiated their primary series. People who have initiated their primary series represent the total number of people who have received at least one dose of any type of COVID-19 vaccine. Individuals who have completed their primary series are included in the count of both initiated and completed. Please note, the measures "vaccines given" and "people vaccinated" are not comparable. Vaccines given counts the number of doses given in a location. People vaccinated counts the number of Washington residents who have initiated their primary series, completed their primary series, received any booster, and received a bivalent booster. Numbers may not always align since people may live in a different county than where they got

SELECT COUNTIES

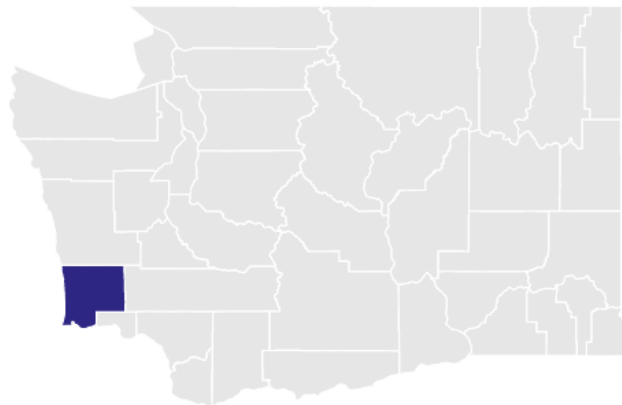
-
- ☐ King County
 - ☐ Kitsap County
 - ☐ Kittitas County
 - ☐ Klickitat County
 - ☐ Lewis County
 - ☐ Lincoln County
 - ☐ Mason County
 - ☐ Okanogan County
 - ☒ Pacific County
 - ☐ Pend Oreille County
 - ☐ Pierce County
 - ☐ San Juan County
 - ☐ Skagit County
 - ☐ Skamania County
 - ☐ Snohomish County
 - ☐ Spokane County

Map View

Tabular View

Percent of Total Population Initiating Primary Series	70.4%
Percent of Total Population Completing Primary Series	63.1%
Percent of Population Initiating Primary Series (16+)	79.2%
Percent of Population Completing Primary Series (16+)	71.4%
Percent of Population Initiating Primary Series (6mo+)	70.6%
Percent of Population Completing Primary Series (6mo+)	63.3%
Percent of Eligible People Receiving Any Booster (5+)	56.0%
Percent of Eligible People Receiving a Bivalent Booster (12+)	10.8%

TOTAL POPULATION THAT INITIATED PRIMARY SERIES

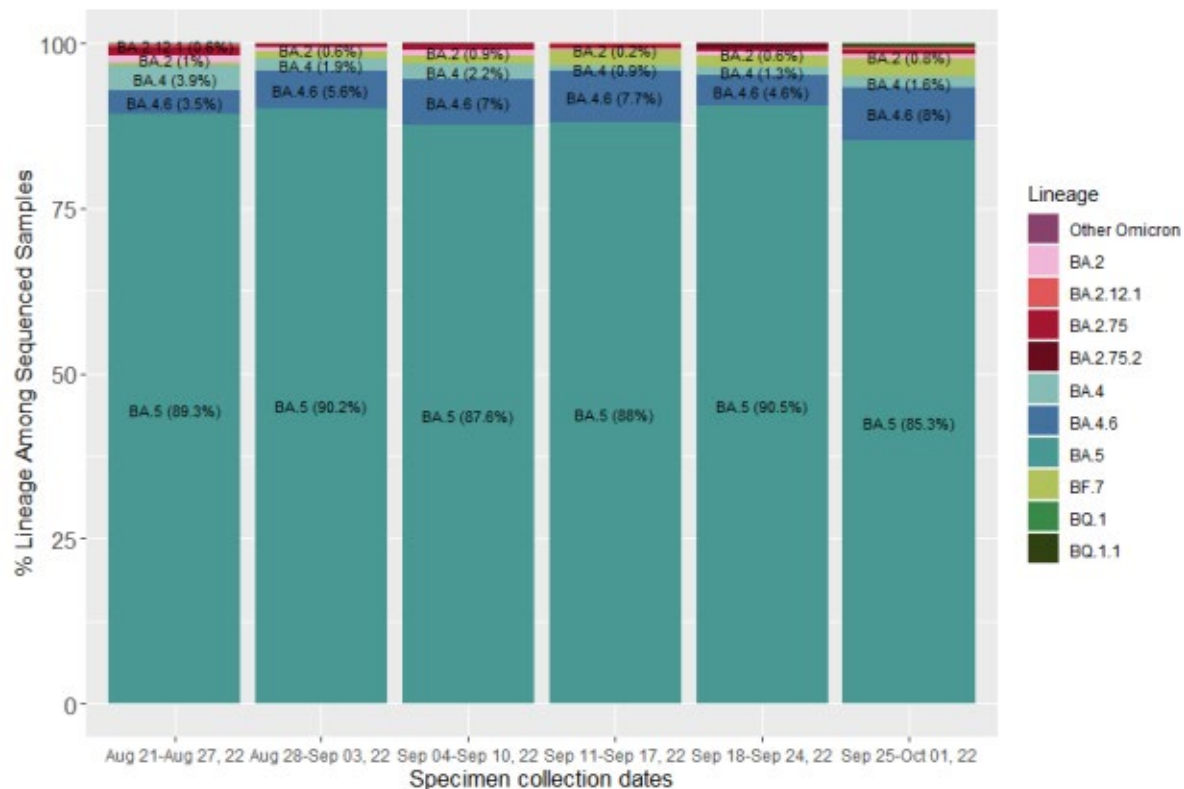


Legend

- 80%+
- >60% to 80%
- >40% to 60%
- >20% to 40%
- >0% to 20%
- Zero

County data for people who initiated their primary series are based on the vaccine recipient's county of residence. 78,412 people who have initiated their primary series do not have a county reported. For 460 people who initiated their primary series, we are

SARS-CoV-2 Variant Proportions in WA



COVID-19 Omicron Variant Update

BA.5 continues to be the dominant variant with BA.4 and BA.4.6 as the next two most prevalent.

Findings for BA.5, BA.4 and BA.4.6 have shown an increased ability to evade immune response from both initial vaccinations and prior infections.

However, the current bivalent vaccine booster is specifically designed for and very effective against these Omicron variants.

[Scheduling information here.](#)

COVID-19 Omicron Variant Update

Reports

✓ Modeling Situation Reports

✓ Roadmap to Recovery Reports

✓ Behavioral Health Reports

✓ Report Archive

- [COVID-19 Cases Among Children and Youth in Washington \(PDF\)](#) - 9/21/2022 - updated weekly
- [Casos de COVID-19 en niños y jóvenes en Washington \(PDF\)](#) Español - 9/21/2022 - Actualizado semanalmente
- [COVID-19 Cases, Hospitalizations, and Deaths by Vaccination Status \(PDF\)](#) - 9/14/2022 - updated monthly
- [COVID-19 Death Categories \(PDF\)](#) - 8/26/2021
- [COVID-19 Morbidity and Mortality by Race, Ethnicity and Language in Washington State \(PDF\)](#) - 9/20/2022 - updated every two weeks
- [Long-term Care Report \(PDF\)](#) - 9/12/2022 - updated monthly
- [Multisystem Inflammatory Syndrome in Children Associated with COVID-19 in Washington State \(PDF\)](#) - 9/14/2022 - updated monthly
- [Outbreaks in Washington State K-12 Schools \(PDF\)](#) - 8/31/2022 - updated monthly
- [Reported COVID-19 Reinfections in Washington State \(PDF\)](#) - 9/21/2022 - updated weekly
- [SARS-CoV-2 Sequencing and Variants in Washington State \(PDF\)](#) - 9/21/2022 - updated weekly
- [SARS-CoV-2 Sequencing and Variants in Washington State Weekly Data \(Excel\)](#) - 9/21/2022 - updated weekly
- [SARS-CoV-2 Vaccine Breakthrough Surveillance and Case Information Resource \(PDF\)](#) - 9/14/2022 - updated monthly
- [Outbreaks in Washington State Agriculture and Food Manufacturing Settings \(PDF\)](#) - 6/16/2022



Click here!

The chart in the previous slide is usually found on Page 7 of the report.

Download printable copies at: <http://www.pacificcountycovid19.com/if-you-have-covid-19.html>



What to do if you are exposed to COVID-19:

If you were exposed and you **DO NOT** have symptoms (regardless of vaccination status)

No quarantine

- You do not need to quarantine unless you develop symptoms

Take precautions until day 10

- Get tested if you develop symptoms
- Wear a quality mask for 10 days while around others
- Avoid travel
- Avoid being around people who are high risk

If you were exposed and you **HAVE** symptoms (regardless of vaccination status)

Quarantine for at least 5 days

Get tested

- Test right away and then again on day 5
- If you can't get a test, but have been exposed and have symptoms, assume you are positive and isolate
- If positive, isolate for 5 days after symptom onset

Continue to take precautions on day 5-10 including:

- Wearing a quality face mask while around others,
- Avoiding travel
- Avoiding being around people who are high risk

More information:

www.cdc.gov/coronavirus/2019-ncov/your-health/quarantine-isolation
www.pacificcountycovid19.com



What to do if you test positive for COVID-19

Updated August 11, 2022

Isolate at home and stay away from others.

- Isolate at least 5 days, or 24 hours after symptoms improve and no fever without medication, WHICHEVER IS LONGER.
- Day 1 of your isolation period begins the first full day after symptoms start.
- Wear a quality face covering at all times when around others through day 10. It is very important to wear a mask at all times for the entire 10 days- even after you are out of isolation- as you may still be contagious on days 5-10
- Improve ventilation by opening windows and/or using air purifiers with HEPA filters.
- Stay hydrated, use OTC medications to manage symptoms.
- Seek medical care if you experience severe symptoms

If you are high risk due to age (over 65), or underlying health condition, contact your provider for treatment options including oral antiviral medication that can help reduce the severity of COVID-19. If you do not have a provider or are unable to get an appt within 48 hrs, call 1-800-525-0127 for a free telehealth appointment.

Reach out to your close contacts and let them know they've been exposed

- Close contacts include anyone you were around for more than 15 minutes from 2 days prior to when you first developed symptoms through today.

Close contacts are not required to quarantine, but should take precautions until day 10

- Get tested (right away if you have symptoms, or on day 5 if you do not have symptoms)
- Wear a quality mask for 10 days while around others
- Avoid travel
- Avoid being around people who are high risk

Find more information at:

www.cdc.gov/coronavirus/2019-ncov/your-health/quarantine-isolation
www.pacificcountycovid19.com

Free At-Home COVID-19 Tests

Pick yours up today!

- Naselle Library
- South Bend Library
- Raymond Library
- Ocean Park Library
- Ilwaco Library
- Pacific County Health Dept (Long Beach or South Bend Office)
- Olympic Area Agency on Aging
- City of Long Beach
- Shoalwater Clinic



COVID-19 Treatment Options

If you are high risk of severe illness due to COVID-19 (as defined below), call your provider to see if you are eligible!

Key points to know:

- Monoclonal antibody treatments (mAB) and oral antiviral medications are available in Pacific County
- Medical provider order is required
- Treatments are most effective if administered within the first few days of disease (the earlier the better)
- Those who are high risk due to age or certain underlying health conditions are eligible. Talk to your provider to see if they are right for you!

More information: <https://www.cdc.gov/coronavirus/2019-ncov/your-health/treatments-for-severe-illness.html>

*Don't have a provider? You can call 1-800-525-0127, then press # to schedule your video consultation via the DOH hotline for FREE. Visit here for more telehealth information:
<https://doh.wa.gov/emergencies/covid-19/treatments/free-telehealth>*