



Public Health & Human Services

# Pacific County COVID-19 Update

## October 5, 2022

# Current COVID-19 Status

## CURRENT STATUS



### COVID-19 IN WASHINGTON STATE

DATA AS OF 10/02/2022 11:59PM PT

The Current Status tab provides a snapshot of statewide and county-level COVID-19 information. The 7-day case rate and percent hospital occupancy measures are presented for the most recent 7-day period with complete data. The total population completing the primary vaccination series measure provides the most recent account of people in Washington who completed the recommended number of COVID-19 vaccinations. [Learn More](#)

### Pacific County Summary

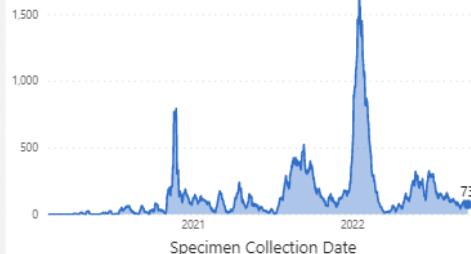
**73** CASES PER 100,000 POPULATION

**7%** OF HOSPITAL BEDS OCCUPIED BY COVID-19 PATIENTS

**63%** OF POPULATION COMPLETING PRIMARY SERIES

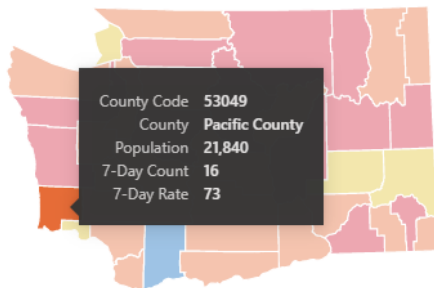
● Low ● Moderate ● Substantial ● High

TREND IN 7-DAY RATE OF NEW COVID-19 CASES PER 100,000 POPULATION



Cases from the last 8 days are not reported  
Hospital bed occupancy is reported only at the state level

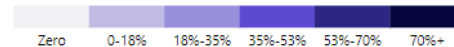
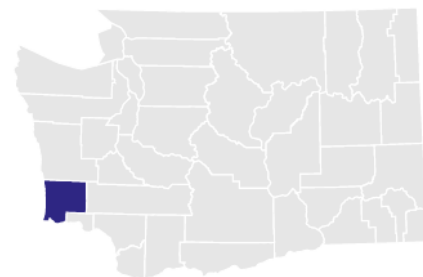
### 7-DAY CASE RATE PER 100,000 POPULATION



0 cases in the measurement period do not have an assigned county

### TOTAL POPULATION COMPLETING PRIMARY VACCINATION SERIES

Measurement Period: 12/15/2020-10/01/2022



64,971 people completing the primary vaccination series do not have a county reported

Access at <https://doh.wa.gov/emergencies/covid-19/data-dashboard> then click/select our county for a summary of the current status. Case rates are in 7-day format compared to our 14-day.

# Disease Activity: Counts

## DISEASE ACTIVITY AND TESTING

Disease Activity

Total Counts

Demographics

Testing



**COVID-19 IN WASHINGTON STATE** Total Cases, Hospitalizations, and Deaths

DATA AS OF 10/02/2022 11:59PM PT

This chart includes the total number of people who have tested positive for COVID-19 since January 21, 2020. [Learn More](#)

Statewide

County

Region

Cases

Hospitalizations

Deaths

SELECT COUNTIES

Search

- ☐ Kitsap County
- ☐ Kittitas County
- ☐ Klickitat County
- ☐ Lewis County
- ☐ Lincoln County
- ☐ Mason County
- ☐ Okanogan County
- ☒ Pacific County
- ☐ Pend Oreille County
- ☐ Pierce County
- ☐ San Juan County
- ☐ Skagit County
- ☐ Skamania County

TOTAL CASE COUNTS

Change data here!



3,343 of 1,818,714 cases do not have an assigned county.

Download

# Disease Activity: Case Rate per 100K

## DISEASE ACTIVITY AND TESTING

Disease Activity

Total Counts

Demographics

Testing

Rate

Count



**COVID-19 IN WASHINGTON STATE** Cases and Deaths by Specimen Collection Date, and Hospitalizations by Admission Date

DATA AS OF 10/02/2022 11:59PM PT

This chart shows the rate of the COVID-19 outbreak in Washington by cases, hospitalizations and deaths over time. [Learn More](#)

Statewide

County

Region

Cases

Hospitalizations

Deaths

R-effective Estimates

SELECT COUNTIES

Search

Select all

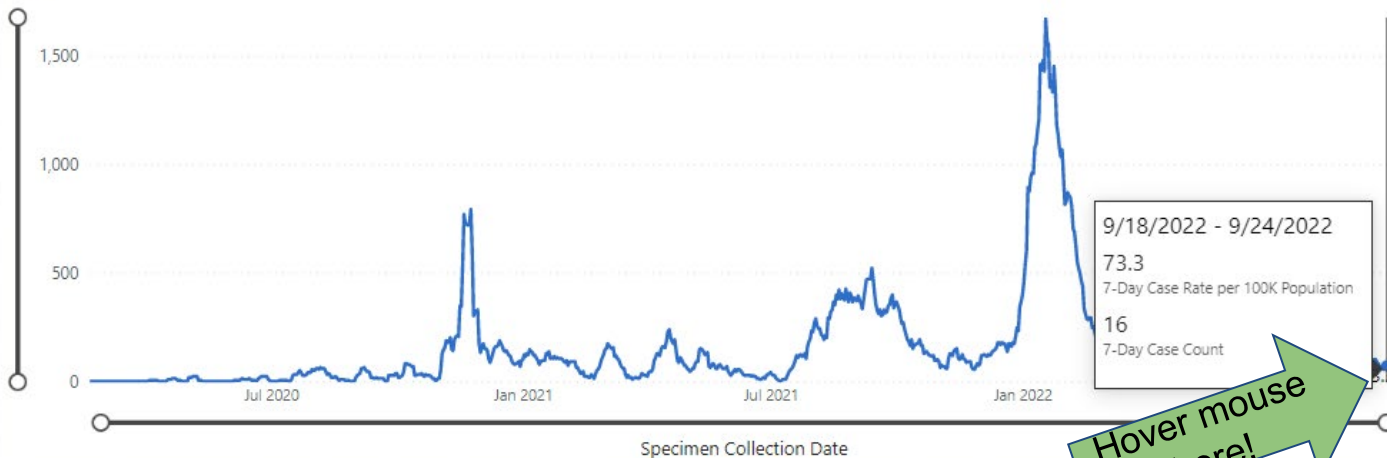
- ☐ Adams County
- ☐ Asotin County
- ☐ Benton County
- ☐ Chelan County
- ☐ Clallam County
- ☐ Clark County
- ☐ Columbia County
- ☐ Cowlitz County
- ☐ Douglas County

TREND IN 7-DAY RATE OF NEW COVID-19 CASES PER 100,000 POPULATION

7-Day Case Rate

7-Day

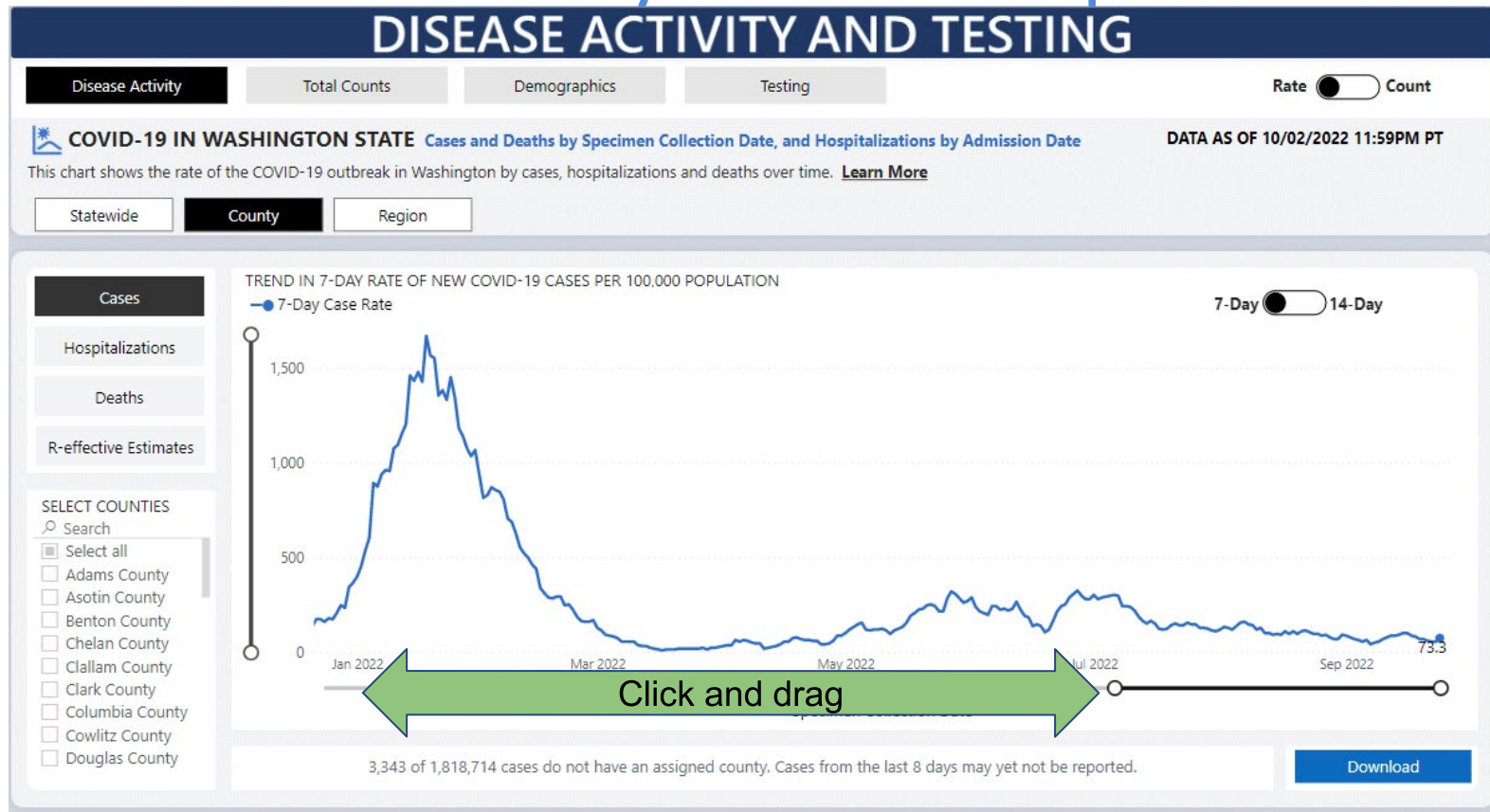
14-Day



3,343 of 1,818,714 cases do not have an assigned county. Cases from the last 8 days may yet not be reported.

Download

# Disease Activity: Case Rate per 100K



Don't forget: You can "Click" and "Drag" the white bubbles at the bottom of the charts to change the dates.

# COVID-19 Cases, Hospitalizations, and Deaths by Vaccination Status

## Washington State Department of Health

September 14, 2022

Unvaccinated **12-34 year-olds** in Washington are

- 1.8 times more likely to get COVID-19 compared with fully vaccinated 12-34 year-olds.
- 3.7 times more likely to be hospitalized with COVID-19 compared with fully vaccinated 12-34 year olds.

Unvaccinated **35-64 year-olds** are

- 1.7 times more likely to get COVID-19 compared with fully vaccinated 35-64 year-olds.
- 3.7 times more likely to be hospitalized with COVID-19 compared with fully vaccinated 35-64 year olds.

Unvaccinated **65+ year-olds** are

- 2.2 times more likely to get COVID-19 compared with fully vaccinated 65+ year-olds.
- 3.4 times more likely to be hospitalized with COVID-19 compared with fully vaccinated 65+ year-olds.
- 4 times more likely to die of COVID-19 compared with fully vaccinated 65+ year-olds.

<https://doh.wa.gov/sites/default/files/2022-02/421-010-CasesInNotFullyVaccinated.pdf?uid=632247fe071ef>



# COVID-19 Cases, Hospitalizations, and Deaths by Vaccination Status

## Washington State Department of Health

(Updated Monthly)

### Reports

✓ Modeling Situation Reports

✓ Roadmap to Recovery Reports

✓ Behavioral Health Reports

✓ Report Archive

Click here!

- [COVID-19 Cases Among Children and Youth in Washington \(PDF\)](#) - 9/21/2022 - updated weekly
- [Casos de COVID-19 en niños y jóvenes en Washington \(PDF\)](#) Español - 9/21/2022 - Actualizado semanalmente
- [COVID-19 Cases, Hospitalizations, and Deaths by Vaccination Status \(PDF\)](#) - 9/14/2022 - updated monthly
- [COVID-19 Death Categories \(PDF\)](#) - 8/26/2021
- [COVID-19 Morbidity and Mortality by Race, Ethnicity and Language in Washington State \(PDF\)](#) - 9/20/2022 - updated every two weeks
- [Long-term Care Report \(PDF\)](#) - 9/12/2022 - updated monthly
- [Multisystem Inflammatory Syndrome in Children Associated with COVID-19 in Washington State \(PDF\)](#) - 9/14/2022 - updated monthly
- [Outbreaks in Washington State K-12 Schools \(PDF\)](#) - 8/31/2022 - updated monthly
- [Reported COVID-19 Reinfections in Washington State \(PDF\)](#) - 9/21/2022 - updated weekly
- [SARS-CoV-2 Sequencing and Variants in Washington State \(PDF\)](#) - 9/21/2022 - updated weekly
- [SARS-CoV-2 Sequencing and Variants in Washington State Weekly Data \(Excel\)](#) - 9/21/2022 - updated weekly
- [SARS-CoV-2 Vaccine Breakthrough Surveillance and Case Information Resource \(PDF\)](#) - 9/14/2022 - updated monthly
- [Outbreaks in Washington State Agriculture and Food Manufacturing Settings \(PDF\)](#) - 6/16/2022

# Vaccination Status: Total Doses

## VACCINATIONS

Where and when are vaccinations being given?

How many people are getting vaccinated?

Who is getting vaccinated?



### COVID-19 IN WASHINGTON STATE

Where and when are vaccinations being given?

DATA AS OF 10/1/2022 11:59:00 PM PT

This chart shows the number of COVID-19 vaccines given in Washington state facilities and reported to the state. Not all COVID-19 vaccines given in Washington are reported to the state. Vaccine doses given reflects the data as of the latest update date. Please note, the measures "vaccines given" and "people vaccinated" are not comparable. People vaccinated counts the number of Washington residents in the primary series completing their primary series, and receiving a booster. Numbers may not always align since people may live in a different county than where they were vaccinated. Vaccination data is updated on Mondays, Wednesdays, and Fridays only. [Learn More](#)

Look here!

#### SELECT COUNTIES

Search

- ☐ Adams County
- ☐ Lincoln County
- ☐ Mason County
- ☐ Okanogan County
- ☒ Pacific County
- ☐ Pend Oreille County
- ☐ Pierce County
- ☐ San Juan County
- ☐ Skagit County
- ☐ Skamania County
- ☐ Snohomish County
- ☐ Spokane County
- ☐ Stevens County
- ☐ Thurston County
- ☐ Unassigned
- ☐ Wahkiakum County
- ☐ Walla Walla County

By Location

By Date

Cumulative View

Vaccine Doses Given and Reported (statewide or selected counties)

38,991

#### Statewide Measures Only

Vaccine Doses Given and Reported in Washington

14,935,450

Doses Delivered to Washington Providers

9,204,460

Doses Delivered for Federal Partnership Programs

7,624,790

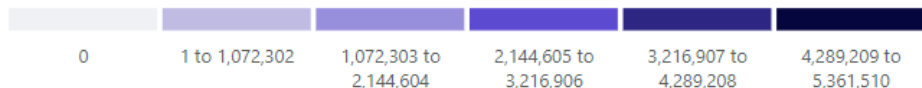
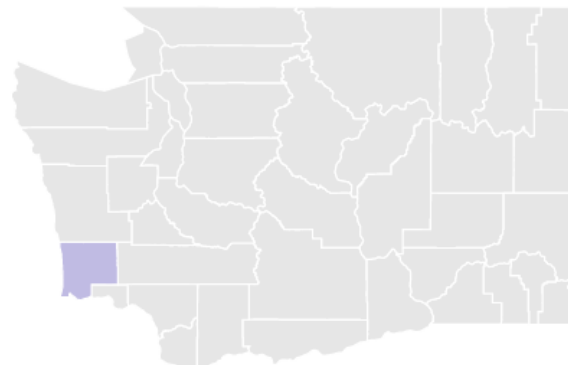
Percentage of Delivered Doses Given

88.7%

Current Complete 7-Day Average

19,398

#### VACCINE DOSES GIVEN AND REPORTED IN WASHINGTON COUNTIES



County data for doses given are based on the location of the facility giving the vaccine. 94,556 vaccine doses given do not have a county reported.



# Vaccination Status: Vaccine Proportions

## VACCINATIONS

Where and when are vaccinations being given?

How many people are getting vaccinated?

Who is getting vaccinated?

Initiated

Completed

Received Booster



### COVID-19 IN WASHINGTON STATE

Initiated Primary Series (Received At Least 1 Dose of Primary Series)

DATA AS OF 10/1/2022 11:59:00 PM PT

This chart shows the number of people in Washington who have initiated their primary series. People who have initiated their primary series represent the total number of people who have received at least one dose of any type of COVID-19 vaccine. Individuals who have completed their primary series are included in the count of both initiated and completed. Please note, the measures "vaccines given" and "people vaccinated" are not comparable. Vaccines given counts the number of doses given in a location. People vaccinated counts the number of Washington residents who have initiated their primary series, completed their primary series, and received a booster. Numbers may not always align since people may live in a different county than where they got vaccinated. [Learn More](#)

#### SELECT COUNTIES

Search

- ☐ King County
- ☐ Kitsap County
- ☐ Kittitas County
- ☐ Klickitat County
- ☐ Lewis County
- ☐ Lincoln County
- ☐ Mason County
- ☐ Okanogan County
- ☒ Pacific County
- ☐ Pend Oreille County
- ☐ Pierce County
- ☐ San Juan County
- ☐ Skagit County
- ☐ Skamania County
- ☐ Snohomish County
- ☐ Spokane County

Map View

Tabular View

Percent of Total  
Population Initiating  
Primary Series

70.0%

Percent of Total  
Population Completing  
Primary Series

62.8%

Percent of Population  
Initiating Primary Series  
(16+)

78.7%

Percent of Population  
Completing Primary Series  
(16+)

71.1%

Percent of Population  
Initiating Primary Series  
(6mo+)

70.3%

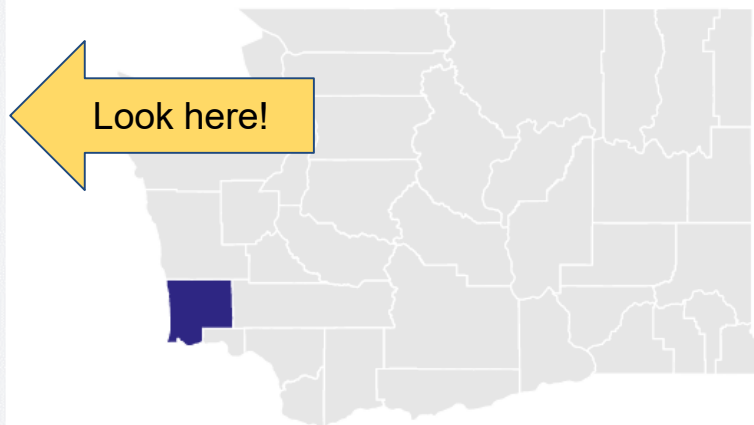
Percent of Population  
Completing Primary Series  
(6mo+)

63.1%

Percent of Eligible People  
Receiving a Booster (5+)

55.5%

#### TOTAL POPULATION THAT INITIATED PRIMARY SERIES

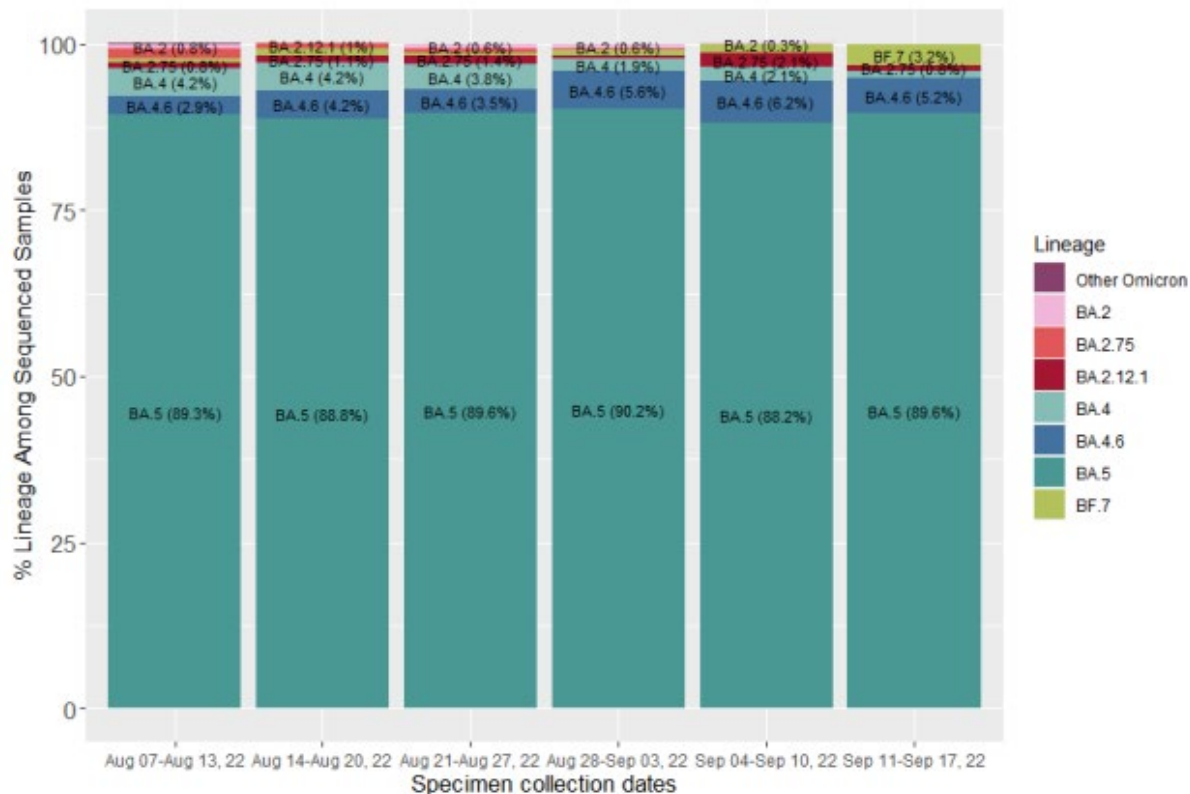


#### Legend

- 80%+
- >60% to 80%
- >40% to 60%
- >20% to 40%
- >0% to 20%
- Zero

County data for people who initiated their primary series are based on the vaccine recipient's county of residence. 79,198 people who have initiated their primary series do not have a county reported. For 457 people who initiated their primary series,

# SARS-CoV-2 Variant Proportions in WA



## COVID-19 Omicron Variant Update

BA.5 continues to be the dominant variant with BA.4 and BA.4.6 as the next two most prevalent.

Findings for BA.5, BA.4 and BA.4.6 have shown an increased ability to evade immune response from both initial vaccinations and prior infections.

However, the current bivalent vaccine booster is specifically designed for and very effective against these Omicron variants.

[Scheduling information here.](#)

# COVID-19 Omicron Variant Update

## Reports

✓ Modeling Situation Reports

✓ Roadmap to Recovery Reports

✓ Behavioral Health Reports

✓ Report Archive

- [COVID-19 Cases Among Children and Youth in Washington \(PDF\)](#) - 9/21/2022 - updated weekly
- [Casos de COVID-19 en niños y jóvenes en Washington \(PDF\)](#) Español - 9/21/2022 - Actualizado semanalmente
- [COVID-19 Cases, Hospitalizations, and Deaths by Vaccination Status \(PDF\)](#) - 9/14/2022 - updated monthly
- [COVID-19 Death Categories \(PDF\)](#) - 8/26/2021
- [COVID-19 Morbidity and Mortality by Race, Ethnicity and Language in Washington State \(PDF\)](#) - 9/20/2022 - updated every two weeks
- [Long-term Care Report \(PDF\)](#) - 9/12/2022 - updated monthly
- [Multisystem Inflammatory Syndrome in Children Associated with COVID-19 in Washington State \(PDF\)](#) - 9/14/2022 - updated monthly
- [Outbreaks in Washington State K-12 Schools \(PDF\)](#) - 8/31/2022 - updated monthly
- [Reported COVID-19 Reinfections in Washington State \(PDF\)](#) - 9/21/2022 - updated weekly
- [SARS-CoV-2 Sequencing and Variants in Washington State \(PDF\)](#) - 9/21/2022 - updated weekly
- [SARS-CoV-2 Sequencing and Variants in Washington State Weekly Data \(Excel\)](#) - 9/21/2022 - updated weekly
- [SARS-CoV-2 Vaccine Breakthrough Surveillance and Case Information Resource \(PDF\)](#) - 9/14/2022 - updated monthly
- [Outbreaks in Washington State Agriculture and Food Manufacturing Settings \(PDF\)](#) - 6/16/2022



Click here!

The chart in the previous slide is usually found on Page 7 of the report.

Download printable copies at: <http://www.pacificcountycovid19.com/if-you-have-covid-19.html>



## What to do if you are exposed to COVID:

**IF YOU were exposed to COVID-19 and are NOT up-to-date on COVID-19 vaccinations (including boosters if eligible)**

### **Quarantine for at least 5 days**

- Stay home for at least 5 full days.

### **Get tested**

- Get tested at least 5 days after close contact with someone with COVID-19.
- If you can't get a test and have symptoms, assume you are positive and isolate

### **Take precautions until Day 10**

- Wear a quality mask for 10 days while around others

### **Avoid travel**

**Avoid being around people who are high risk**

**IF YOU were exposed to COVID and you are up-to-date on COVID vaccinations**

### **No Quarantine**

- You do not need to stay home **unless** you develop symptoms

### **Take precautions until Day 10**

- Wear a quality mask for 10 days when around others
- Get tested if you develop symptoms, or assume you are positive and isolate for 5 days

### **Avoid travel**

**Avoid being around people who are high risk**

**IF YOU were exposed and had confirmed COVID within the past 90 days**

### **No Quarantine**

- You do not need to quarantine **unless** you develop symptoms.

### **Take precautions until Day 10**

- Take precautions until Day 10
- Wear a mask for 10 days when around others.
- If you develop symptoms, assume you are positive and isolate for 5 days

### **Avoid travel**

**Avoid being around people who are high risk**



## What to do if you test positive:

**For non-tested:** If you are symptomatic or have been exposed to COVID and unable to get a test, please assume you are positive and follow the advice below. .

### **Isolate at home, away from others.**

- Isolate at least 5 days OR 24 hours after symptoms improve and no fever without fever reducing medicine **WHICHEVER IS LONGER**
- Day 1 of your isolation period begins the first full day after symptoms start
- Continue to wear a quality mask while around others until day 10

### **Reach out to your close contacts and let them know they've been exposed and they should quarantine.**

- Quarantine for a minimum of 5 days from the last date of exposure.
- If no symptoms by day 5, quarantine can end but continue to wear a face covering and monitor for symptoms until day 10.
- If symptoms develop, get tested. If unable to test, assume you are positive & isolate.
- Close contacts include anyone you were around who is not fully vaccinated for more than 15 minutes while you were infectious (2 days prior to when symptoms started)

### **Wear a mask while inside and ask others in your home to do the same (preferably a KN95, KF-94, or a 3-ply surgical mask, if possible)**

### **Ventilate your space as much as you can.**

- If your home has an HVAC system, make sure it has a fresh filter. Consider using a HEPA air purifier if you don't have HVAC.
- Open the windows and doors whenever possible and safe to do so.
- Use fans to move virus particles from inside your home to outside.

### **Stay hydrated, use OTC medications such as acetaminophen to manage symptoms. Seek medical care if you display the following symptoms:**

- Trouble breathing.
- Persistent pain or pressure in the chest.
- Confusion, inability to wake or stay awake.
- Pale, gray, or blue-colored skin, lips, or nail beds (or an abnormally low reading on a pulse oximeter, if you have one.)

\*This list is not all possible symptoms. Call your medical provider if you have any other severe or concerning symptoms.

More information at: [www.pacificcountycovid19.com](http://www.pacificcountycovid19.com)

# Free At-Home COVID-19 Tests & N95 Masks

*Pick yours up today!*

- Naselle Library
- South Bend Library
- Raymond Library
- Ocean Park Library
- Ilwaco Library
- Pacific County Health Dept (Long Beach or South Bend Office)
- Olympic Area Agency on Aging
- City of Long Beach
- Shoalwater Clinic



# COVID-19 Treatment Options

*If you are high risk of severe illness due to COVID-19 (as defined below), call your provider to see if you are eligible!*

Key points to know:

- Monoclonal antibody treatments (mAB) and oral antiviral medications are available in Pacific County
- Medical provider order is required
- Treatments are most effective if administered within the first few days of disease (the earlier the better)
- Those who are high risk due to age or certain underlying health conditions are eligible. Talk to your provider to see if they are right for you!

More information: <https://www.cdc.gov/coronavirus/2019-ncov/your-health/treatments-for-severe-illness.html>