

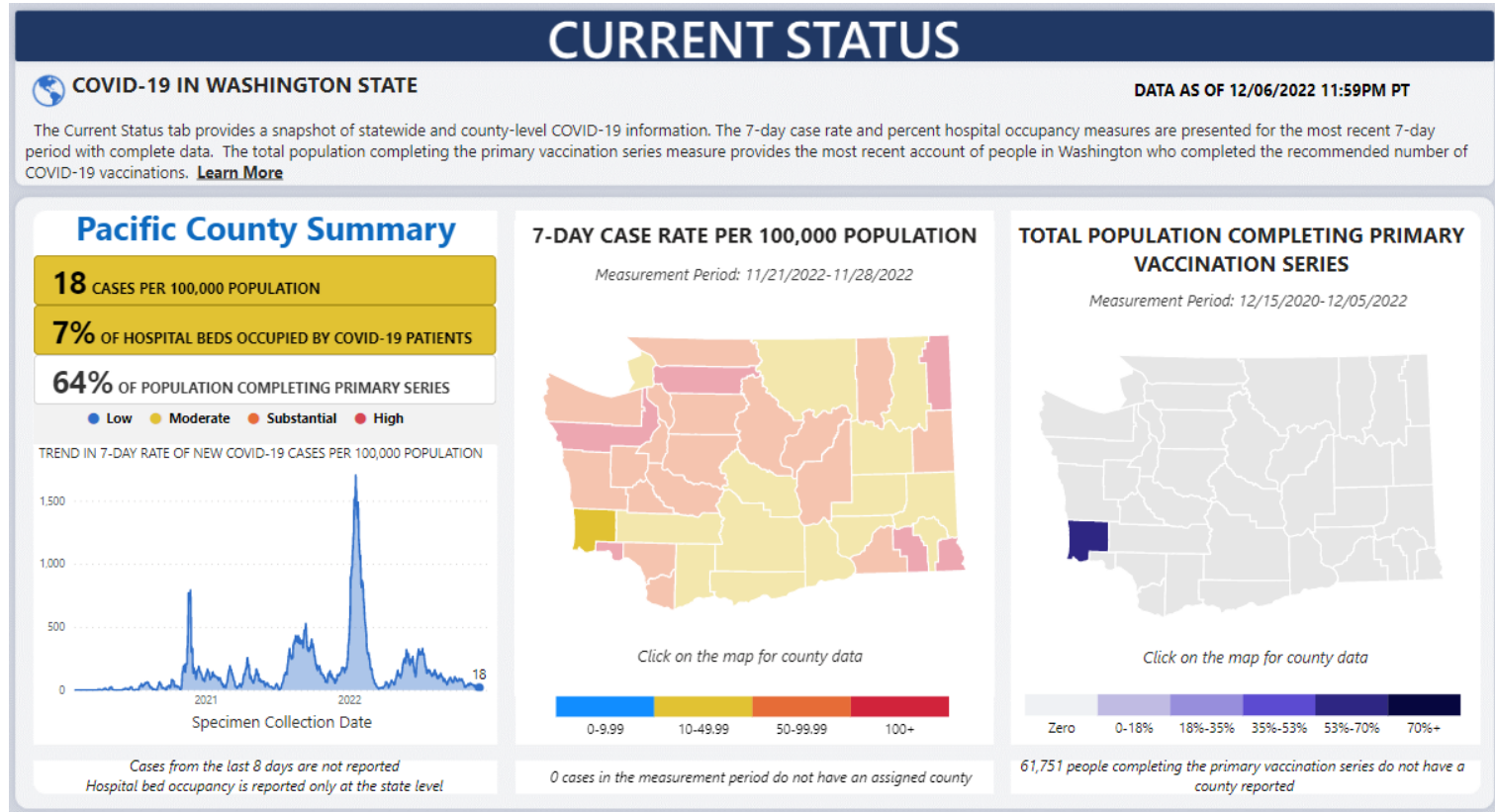


Public Health & Human Services

# Pacific County COVID-19 Update

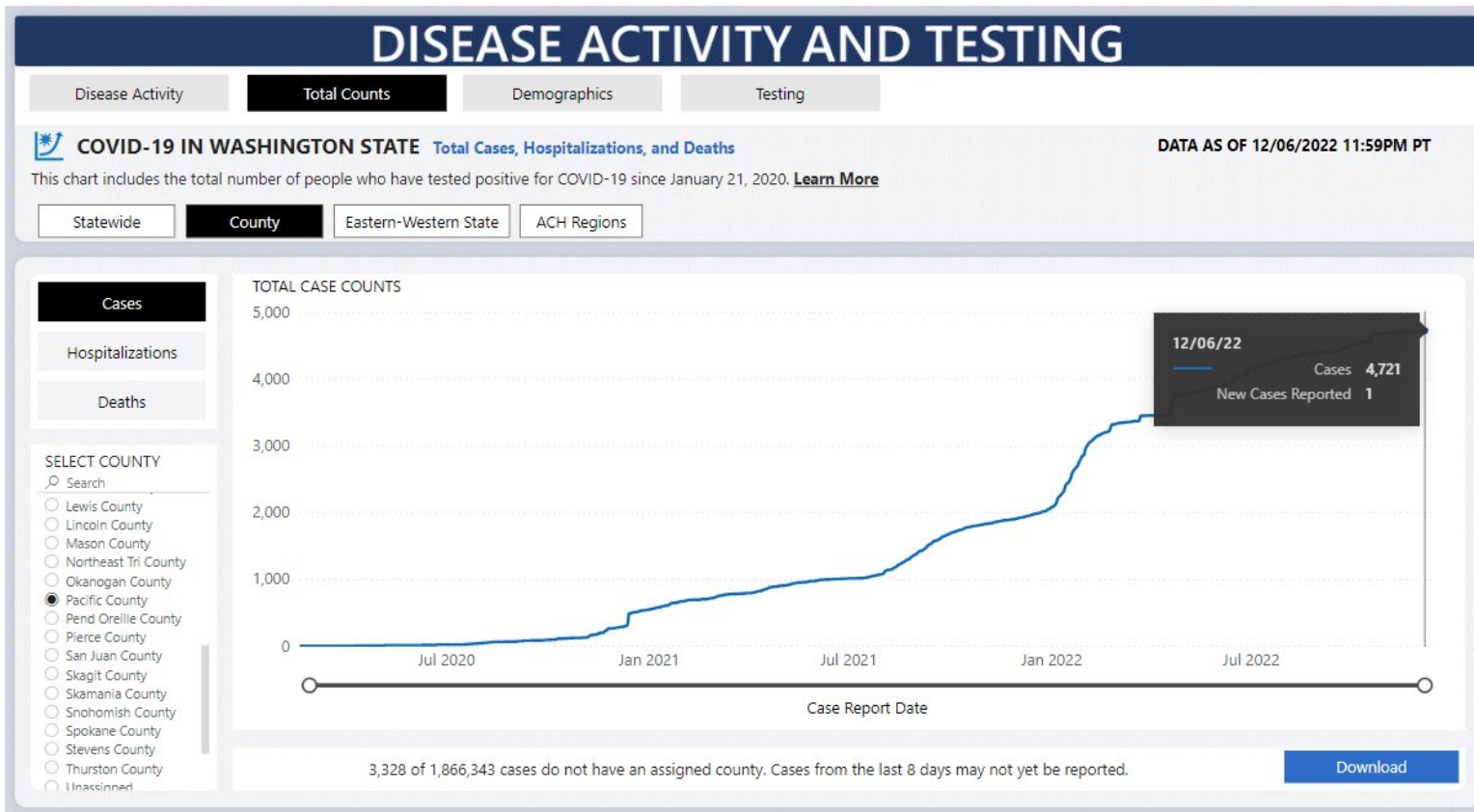
## December 8, 2022

# Current COVID-19 Status



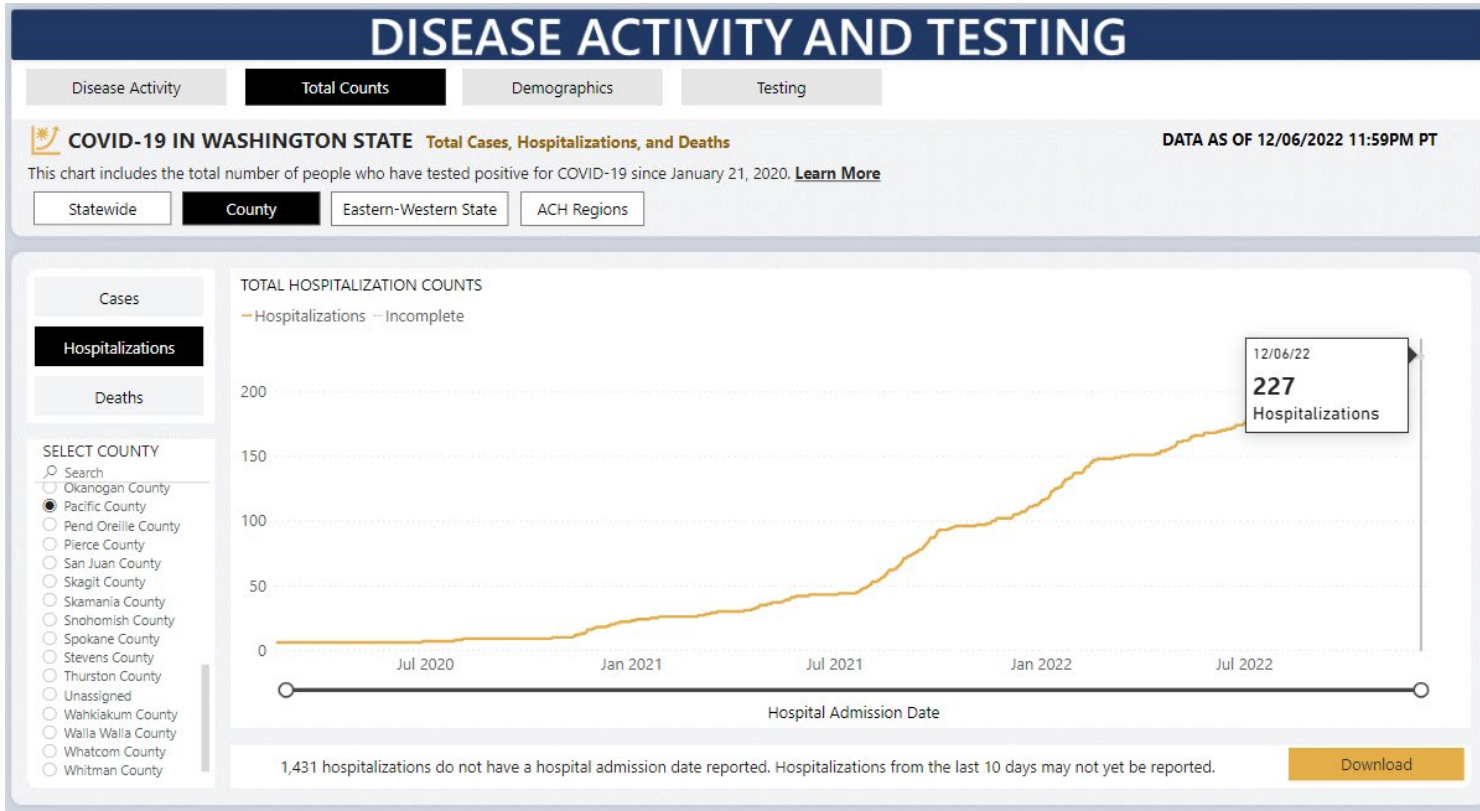
Access at <https://doh.wa.gov/emergencies/covid-19/data-dashboard> then click/select our county for a summary of the current status. The current **7-day** rate is considered “**Moderate.**”

# Disease Activity: Case Count



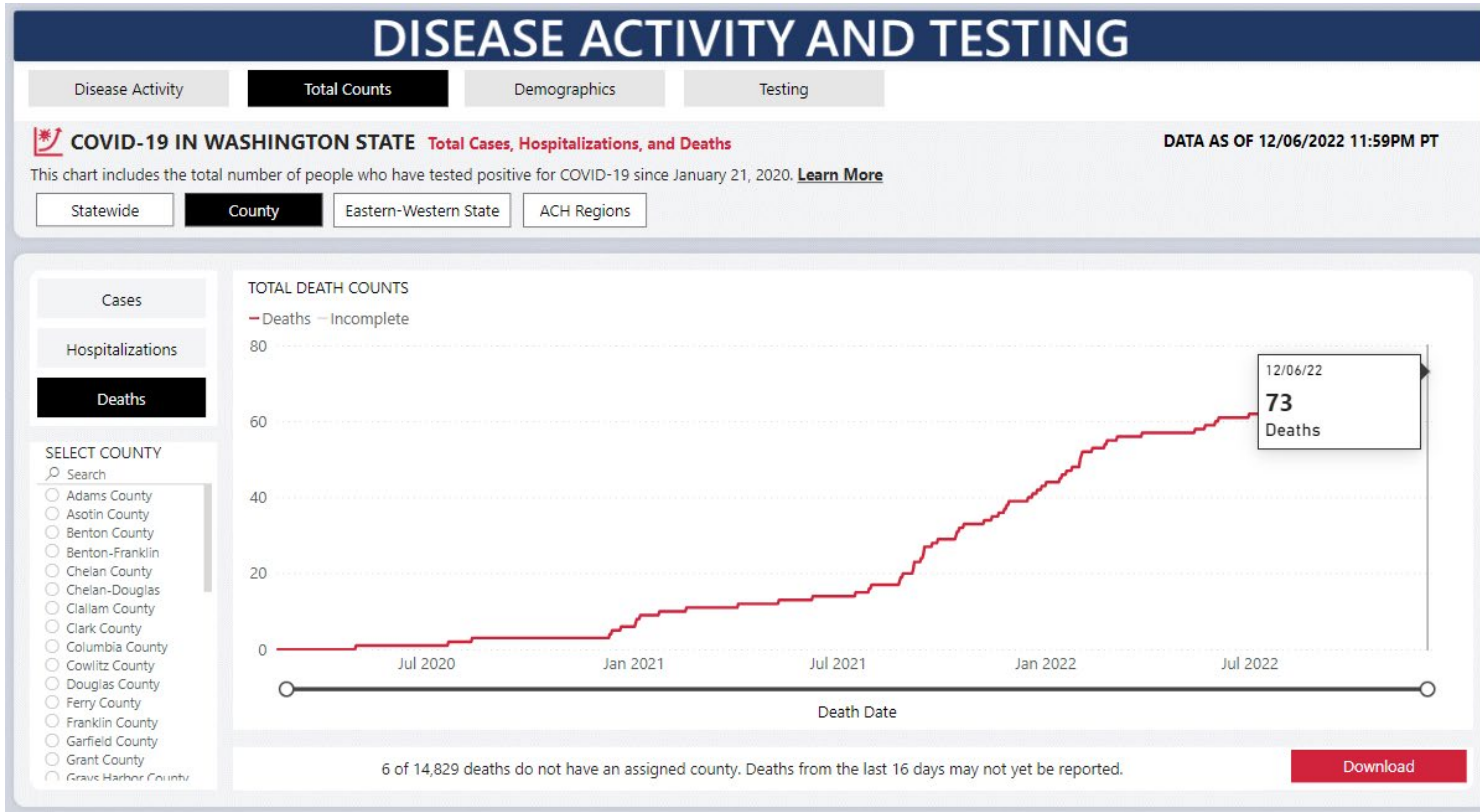
DOH has recorded **4,721** cases of COVID-19 as of 12/8. **10** new cases have been reported since 12/1.

# Disease Activity: Hospitalization Count



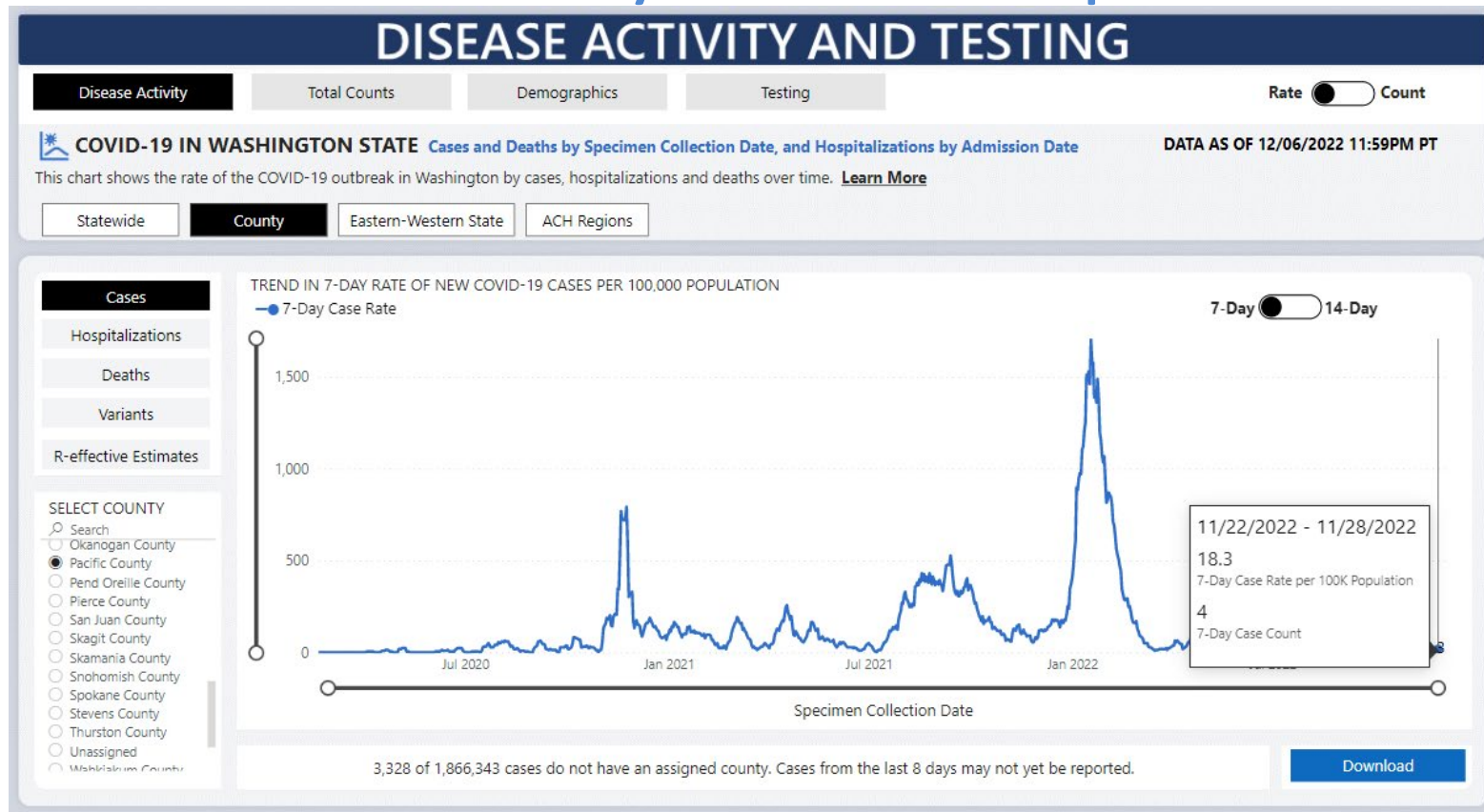
DOH has recorded **227** hospitalizations linked to COVID-19 as of 12/8. **3** new hospitalizations have been reported since 12/1.

# Disease Activity: Hospitalization Count



DOH has recorded **73** deaths linked to COVID-19 as of 12/8. **0** new deaths have been reported since 12/1.

# Disease Activity: Case Rate per 100K



The current 7-day case rate is 18.3 per 100,000. This is less as last week's (12/1) rate of 32.1 per 100,000.



# COVID-19 Cases, Hospitalizations, and Deaths by Vaccination Status

## Washington State Department of Health

November 16, 2022

Unvaccinated 12-34 year-olds in Washington are

- 2 times more likely to get COVID-19 compared with fully vaccinated 12-34 year-olds.
- 4.1 times more likely to be hospitalized with COVID-19 compared with fully vaccinated 12-34 year olds.

Unvaccinated 35-64 year-olds are

- 1.7 times more likely to get COVID-19 compared with fully vaccinated 35-64 year-olds.
- 3.5 times more likely to be hospitalized with COVID-19 compared with fully vaccinated 35-64 year olds.

Unvaccinated 65+ year-olds are

- 2.2 times more likely to get COVID-19 compared with fully vaccinated 65+ year-olds.
- 3.3 times more likely to be hospitalized with COVID-19 compared with fully vaccinated 65+ year-olds.
- 3.7 times more likely to die of COVID-19 compared with fully vaccinated 65+ year-olds.

<https://doh.wa.gov/sites/default/files/2022-02/421-010-CasesInNotFullyVaccinated.pdf?uid=6346f5443f934>

# Vaccination Status: Total Doses

## VACCINATIONS

Where and when are  
vaccinations being given?

How many people are getting  
vaccinated?

Who is getting vaccinated?



### COVID-19 IN WASHINGTON STATE

Where and when are vaccinations being given?

DATA AS OF 12/5/2022 11:59:00 PM PT

This chart shows the number of COVID-19 vaccines given in Washington state facilities and reported to the state. Not all COVID-19 vaccines given in Washington are reported to the state. Vaccine doses given reflects the data reported to the state as of the latest update date. Please note, the measures "vaccines given" and "people vaccinated" are not comparable. People vaccinated counts the number of Washington residents initiating their primary series, completing their primary series, receiving any booster, and receiving a bivalent booster. Numbers may not always align since people may live in a different county than where they got vaccinated. Vaccination data are updated on Mondays, Wednesdays, and Fridays only. [Learn More](#)

#### SELECT COUNTIES

Search

- ☐ Adams County
- ☐ Lewis County
- ☐ Lincoln County
- ☐ Mason County
- ☐ Okanogan County
- ☒ Pacific County
- ☐ Pend Oreille County
- ☐ Pierce County
- ☐ San Juan County
- ☐ Skagit County
- ☐ Skamania County
- ☐ Snohomish County
- ☐ Spokane County
- ☐ Stevens County
- ☐ Thurston County
- ☐ Unassigned
- ☐ Wabikiskum County

By Location

By Date

Cumulative View

Vaccine Doses Given  
and Reported (statewide  
or selected counties) **40,621**

#### Statewide Measures Only

Vaccine Doses Given  
and Reported in  
Washington **40,621**

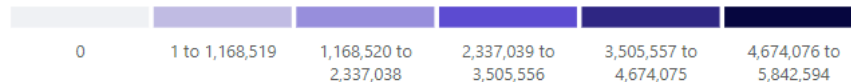
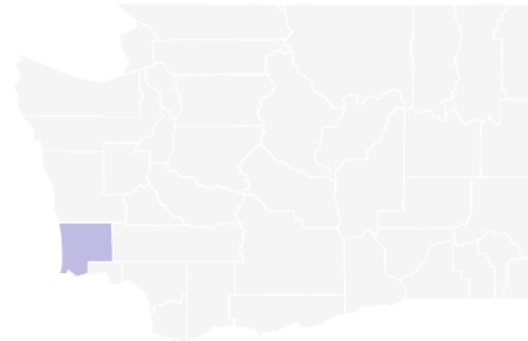
Doses Delivered to  
Washington Providers **9,278,660**

Doses Delivered for  
Federal Partnership  
Programs **7,710,290**

Percentage of  
Delivered Doses  
Given **0.2%**

Current Complete 7-  
Day Average **3**

#### VACCINE DOSES GIVEN AND REPORTED IN WASHINGTON COUNTIES



County data for doses given are based on the location of the facility giving the vaccine. vaccine doses given do not have a county reported.

**40,621** vaccine doses have been administered in Pacific County. This is a 48 dose increase from last week's count: **40,573**



# Vaccination Status: Vaccine Proportions

## VACCINATIONS

Where and when are vaccinations being given?

How many people are getting vaccinated?

Who is getting vaccinated?

Initiated

Completed

Any Booster

Bivalent Booster



### COVID-19 IN WASHINGTON STATE

Completed Primary Series (Received Recommended Doses of Primary Series)

DATA AS OF 12/5/2022 11:59:00 PM PT

This chart shows the number of people in Washington that have completed their primary series. People who have completed their primary series represent the number of people who have received one dose of a single-shot vaccine, a second dose of a 2-dose vaccine, or a third dose of a 3-dose vaccine. Individuals who have completed their primary series are included in the count of both initiated and completed. Please note, the measures "vaccines given" and "people vaccinated" are not comparable. Vaccines given counts the number of doses given in a location. People vaccinated counts the number of Washington residents who have initiated their primary series, completed their primary series, received any booster, and received a bivalent booster. Numbers may not always align since people may

#### SELECT COUNTIES

Search

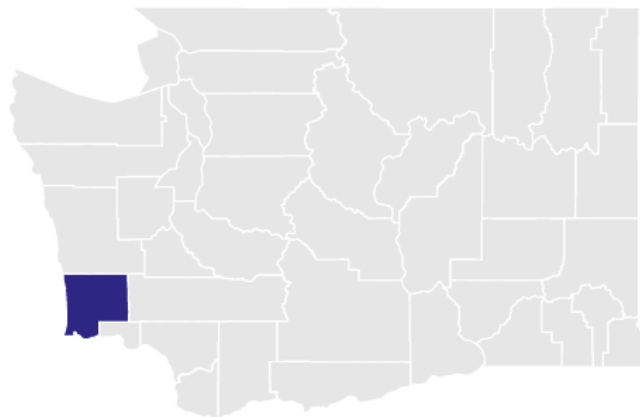
- ☐ Adams County
- ☐ Lincoln County
- ☐ Mason County
- ☐ Okanogan County
- ☒ Pacific County
- ☐ Pend Oreille County
- ☐ Pierce County
- ☐ San Juan County
- ☐ Skagit County
- ☐ Skamania County
- ☐ Snohomish County
- ☐ Spokane County
- ☐ Stevens County
- ☐ Thurston County
- ☐ Unassigned
- ☐ Wahkiakum County

Map View

Tabular View

Percent of Total Population Initiating Primary Series	71.1%
Percent of Total Population Completing Primary Series	63.8%
Percent of Population Initiating Primary Series (16+)	80.1%
Percent of Population Completing Primary Series (16+)	72.1%
Percent of Population Initiating Primary Series (6mo+)	71.4%
Percent of Population Completing Primary Series (6mo+)	64.0%
Percent of Eligible People Receiving Any Booster (5+)	57.3%
Percent of Eligible People Receiving a Bivalent Booster (5+)	21.0%

#### TOTAL POPULATION THAT COMPLETED PRIMARY SERIES

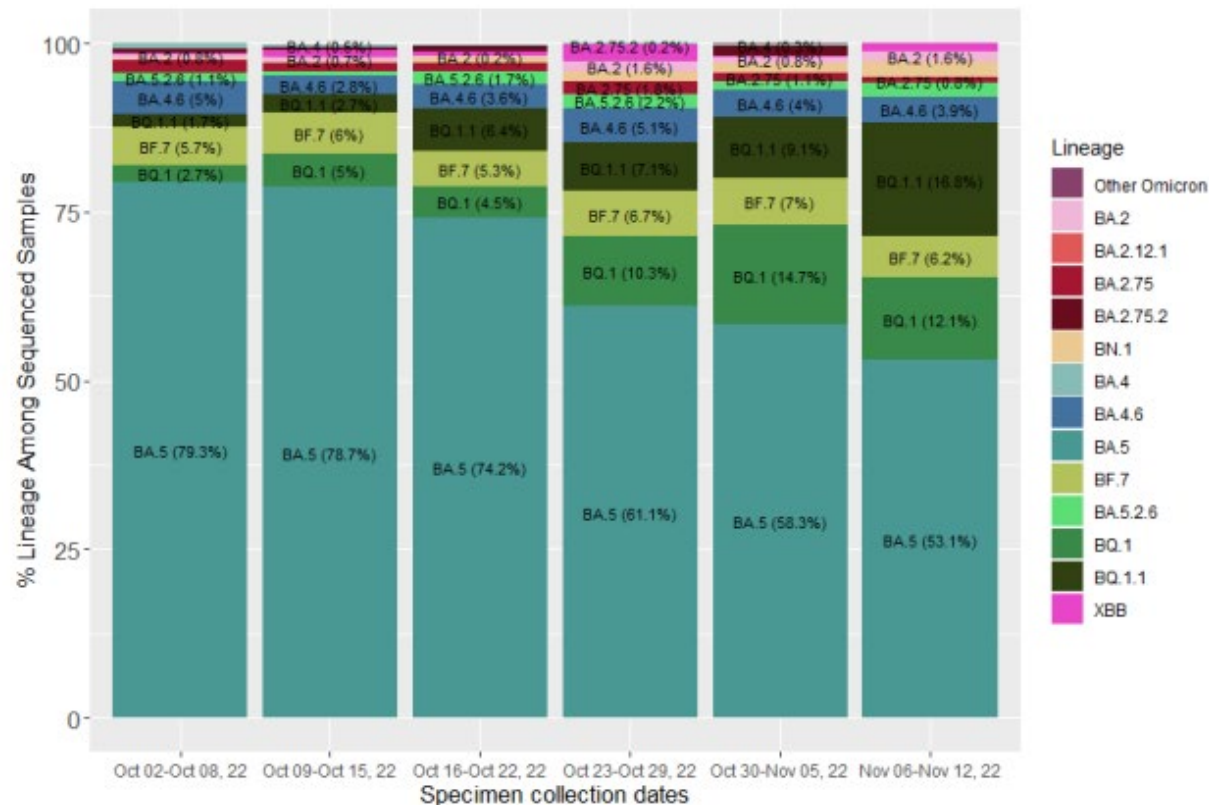


#### Legend

- 70%+
- >53% to 70%
- >35% to 53%
- >18% to 35%
- >0 to 18%
- Zero

County data for people who completed their primary series are based on the vaccine recipient's county of residence. 61,751 people who completed their primary series do not have a county reported. For 455 people who completed their primary series, we are

# SARS-CoV-2 Variant Proportions in WA



## COVID-19 Omicron Variant Update

BA.5 continues to be the dominant variant with BQ.1 & BF.7 as the next two most prevalent. BQ.1, BF.7, and BQ.1.1 are sub variants of BA.5.

Findings for BA.5 have shown an increased ability to evade immune response from both initial vaccinations and prior infections.

However, the current bivalent vaccine booster is specifically designed for and very effective against these Omicron variants.

[Scheduling information here.](https://doh.wa.gov/sites/default/files/2022-02/420-316-SequencingAndVariantsReport.pdf?uid=632b825e2f0f4)

Download printable copies at: <http://www.pacificcountycovid19.com/if-you-have-covid-19.html>



## What to do if you are exposed to COVID-19:

If you were exposed and you **DO NOT** have symptoms (regardless of vaccination status)

### No quarantine

- You do not need to quarantine unless you develop symptoms

### Take precautions until day 10

- Get tested if you develop symptoms
- Wear a quality mask for 10 days while around others
- Avoid travel
- Avoid being around people who are high risk

If you were exposed and you **HAVE** symptoms (regardless of vaccination status)

### Quarantine for at least 5 days

#### Get tested

- Test right away and then again on day 5
- If you can't get a test, but have been exposed and have symptoms, assume you are positive and isolate
- If positive, isolate for 5 days after symptom onset

#### Continue to take precautions on day 5-10 including:

- Wearing a quality face mask while around others,
- Avoiding travel
- Avoiding being around people who are high risk

#### More information:

[www.cdc.gov/coronavirus/2019-ncov/your-health/quarantine-isolation](http://www.cdc.gov/coronavirus/2019-ncov/your-health/quarantine-isolation)  
[www.pacificcountycovid19.com](http://www.pacificcountycovid19.com)



## What to do if you test positive for COVID-19

*Updated August 11, 2022*

### Isolate at home and stay away from others.

- Isolate at least 5 days, or 24 hours after symptoms improve and no fever without medication, **WHICHEVER IS LONGER**.
- Day 1 of your isolation period begins the first full day after symptoms start.
- Wear a quality face covering at all times when around others through day 10. It is very important to wear a mask at all times for the entire 10 days- even after you are out of isolation- as you may still be contagious on days 5-10
- Improve ventilation by opening windows and/or using air purifiers with HEPA filters.
- Stay hydrated, use OTC medications to manage symptoms.
- Seek medical care if you experience severe symptoms

**If you are high risk due to age (over 65), or underlying health condition, contact your provider for treatment options including oral antiviral medication that can help reduce the severity of COVID-19. If you do not have a provider or are unable to get an appt within 48 hrs, call 1-800-525-0127 for a free telehealth appointment.**

### Reach out to your close contacts and let them know they've been exposed

- Close contacts include anyone you were around for more than 15 minutes from 2 days prior to when you first developed symptoms through today.

### Close contacts are not required to quarantine, but should take precautions until day 10

- Get tested (right away if you have symptoms, or on day 5 if you do not have symptoms)
- Wear a quality mask for 10 days while around others
- Avoid travel
- Avoid being around people who are high risk

#### Find more information at:

[www.cdc.gov/coronavirus/2019-ncov/your-health/quarantine-isolation](http://www.cdc.gov/coronavirus/2019-ncov/your-health/quarantine-isolation)  
[www.pacificcountycovid19.com](http://www.pacificcountycovid19.com)

Descargue copias imprimibles en: <http://www.pacificcountycovid19.com/if-you-have-covid-19.html>



## Que hacer si a sido expuesto al COVID-19:

Si usted fue expuesto y **NO** tiene síntomas (independientemente de los estados de vacunación)

### No haga cuarentena

- No necesita hacer cuarentena al menos que desarrolle síntomas

### Tenga precaución por un total de 10 días

- Hágase la prueba si desarrolla síntomas
- Use una mascarilla de calidad alrededor de otras personas por un total de 10 días
- Evite viajar
- Evite el contacto con personas de alto riesgo

Si ha sido expuesto y **SI** tiene síntomas (independientemente de los estados de vacunación)

### Haga cuarentena por al menos 5 días

#### Hágase la prueba

- Hágase una prueba de inmediato y otra el día 5
- Si no puede obtener una prueba, ha sido expuesto y tiene síntomas, asuma que está positivo y aléjese de otros
- Si da positivo, haga aislamiento por 5 días tras el desarrollo de síntomas

#### Siga tomando precaución del día 5 al 10 esto incluye :

- Usar una mascarilla ajustada alrededor de otros,
- Evitando viajar
- Evitando el contacto con personas del alto riesgo

Encuentre más información visitando:

[www.cdc.gov/coronavirus/2019-ncov/your-health/quarantine-isolation](http://www.cdc.gov/coronavirus/2019-ncov/your-health/quarantine-isolation)  
[www.pacificcountycovid19.com](http://www.pacificcountycovid19.com)



## Qué hacer si da positivo al COVID-19:

Última actualización: 11 de ago. del 2022

### Aisles en casa y aléjese de los demás.

- Aísele por lo menos 5 días o 24 horas después de que hayan mejorado sus síntomas o que no tenga fiebre sin el uso de medicamento contra la fiebre CUALQUIERA QUE DURE MÁS.
- El primer día del periodo de aislamiento comienza un día después de presentar síntomas.
- Use una mascarilla de calidad en todo momento alrededor de otras personas durante un total de 10 días. Es muy importante usar la mascarilla por un total de 10 días aun si ha terminado su aislamiento – ya que aún puede ser contagioso en los días 5-10.
- Mejore la ventilación abriendo ventanas y/o usando purificadores de aire con filtro absorbente de partículas de alta eficiencia (HEPA Filter).
- Manténgase hidratado, use medicamentos sin receta para controlar sus síntomas.
- Busque atención médica si presenta síntomas severos.

**Si usted tiene un alto riesgo de enfermarse (mayor de 65), o alguna condición médica,** contacte a su proveedor médico para opciones de tratamiento incluyendo tratamientos antivirales que pueden ayudar a evitar la forma grave del COVID-19. Si usted no tiene un proveedor médico o no puede tener una cita médica dentro de 48 horas, llame al 1-800-525-0127 para una cita gratis de telesalud.

### Avise a sus contactos cercanos que han sido expuestos

- Los contactos cercanos incluyen cualquier persona con quien usted haya tenido contacto por más de 15 minutos hasta 2 días antes de que usted haya presentado síntomas.
- 

**No es necesario que los contactos cercanos hagan cuarentena, pero deben tener precaución un total de 10 días.**

- Hágase la prueba si desarrolla síntomas
- Use una mascarilla de calidad por un total de 10 días
- Evite viajar
- Evite el contacto cercano con personas de alto riesgo

Encuentre más información visitando:

[www.cdc.gov/coronavirus/2019-ncov/your-health/quarantine-isolation](http://www.cdc.gov/coronavirus/2019-ncov/your-health/quarantine-isolation)  
[www.pacificcountycovid19.com](http://www.pacificcountycovid19.com)

# Free At-Home COVID-19 Tests

*Pick yours up today!*

- Naselle Library
- South Bend Library
- Raymond Library
- Ocean Park Library
- Ilwaco Library
- Pacific County Health Dept (Long Beach or South Bend Office)
- Olympic Area Agency on Aging
- City of Long Beach
- Shoalwater Clinic





# COVID-19 Treatment Options

*If you are high risk of severe illness due to COVID-19 (as defined below), call your provider to see if you are eligible!*

Key points to know:

- Monoclonal antibody treatments (mAB) and oral antiviral medications are available in Pacific County
- Medical provider order is required
- Treatments are most effective if administered within the first few days of disease (the earlier the better)
- Those who are high risk due to age or certain underlying health conditions are eligible. Talk to your provider to see if they are right for you!

More information: <https://www.cdc.gov/coronavirus/2019-ncov/your-health/treatments-for-severe-illness.html>

\*Don't have a provider? You can call [1-800-525-0127](tel:1-800-525-0127), then press # to schedule your video consultation via the DOH hotline for FREE. Visit here for more telehealth information: <https://doh.wa.gov/emergencies/covid-19/treatments/free-telehealth>\*